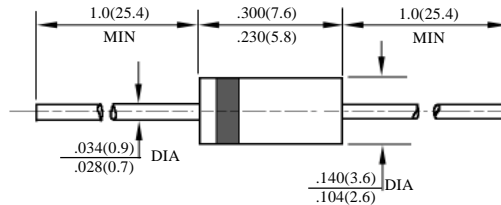


FR151G – FR157G

 快速玻璃钝二极管
 FAST GPP DIODES

型号 TYPE	最大反向 峰值电压 Maximum Peak Reverse Voltage	最大平均正向电流 Maximum Average Rectified Current @ Half-Wave Resistive Load 60Hz	最大正向浪涌电流 Maximum Forward Peak Surge Current @ 8.3ms Superimposed	最大反向漏电流 Maximum Reverse Current @ PRV @ T _A =25°C	最大正向电压 Maximum Forward Voltage @ T _A =25°C	最大反向 恢复时间 Maximum Reverse Recovery Time	外型尺寸 Package Dimensions		
	PRV	I _O @ T _L		I _{FM} (Surge)	I _R	I _{FM} V _{FM}	T _{rr}		
	V _{PK}	A _{AV}	°C	A _{PK}	µA _{dc}	A _{PK} V _{PK}	ns		
FR151G	50	1.5	55	30	5.0	1.0	1.3	150	DO-15
FR152G	100							150	
FR153G	200							150	
FR154G	400							150	
FR155G	600							250	
FR156G	800							500	
FR157G	1000							500	

 T_{rr}测试条件: I_F = 0.5A, I_R = 1.0A, I_{RR} = 0.25A

 T_{rr} Test Conditions: I_F = 0.5A, I_R = 1.0A, I_{RR} = 0.25A


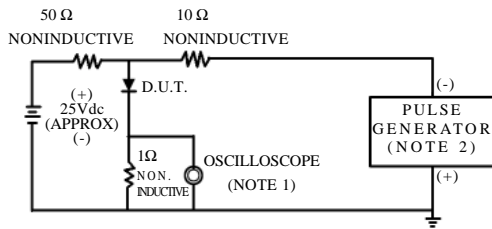
DO-15

FR151G-FR157G

快速 GPP 二极管额定值与特性曲线

RATING & CHARACTERISTIC CURVES OF FAST GPP DIODE

FIG.1-TEST CIRCUIT DIAGRAM AND REVERSE RECOVERY TIME CHARACTERISTIC



NOTES:1.Rise Time=7ns max.
Input Impedance=1megohm.22pF.
2.Rise Time=10ns max.
Source Impedance=50 ohms.

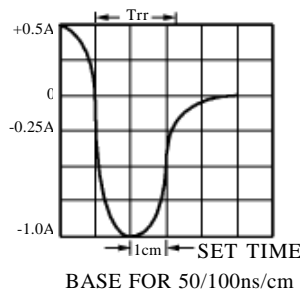


FIG. 2 – TYPICAL FORWARD CURRENT DERATING CURVE

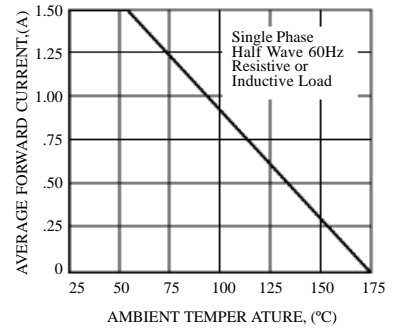


FIG. 3 – TYPICAL INSTANTANEOUS FORWARD CHARACTERISTICS

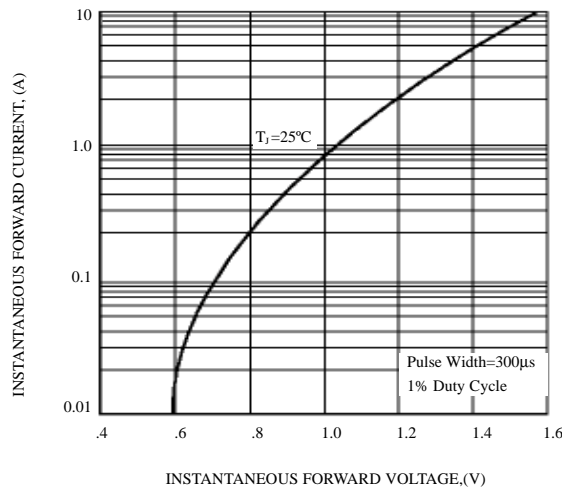


FIG. 4 – MAXIMUM NON-REPETITIVE FORWARD SURGE CURRENT

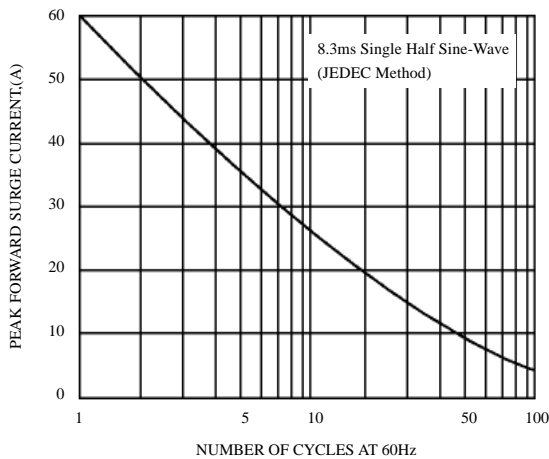


FIG. 5 – TYPICAL JUNCTION CAPACITANCE

