

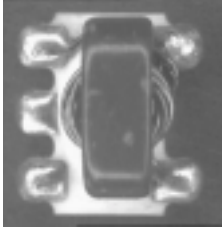
M/A-COM E-Series RF 4:1 Transformer

20 - 1000 MHz

SM-22 Package

Features

- Surface Mount
- 4:1 Impedance Ratio



Description

M/A-COM's MABAES0034 is a 4:1 RF transformer in a low cost, surface mount package. Ideally suited for high volume cellular and wireless applications.

Functional Configuration

Function	Pin No.
Primary dot	1
Primary	5
Primary CT	-
Secondary dot	4
Secondary	5
Secondary CT	-
Case Ground	-
Not Connected	2,3

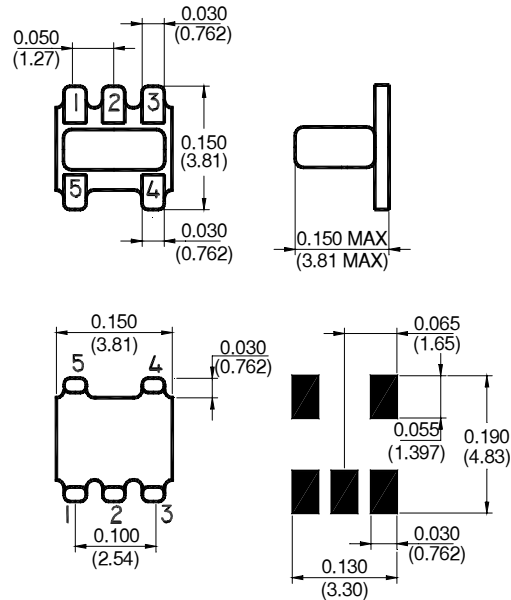
Absolute Maximum Ratings

Parameter	Absolute Maximum
RF Power	250 mW
DC Current	30 mA
Storage Temperature	-55°C to +100°C

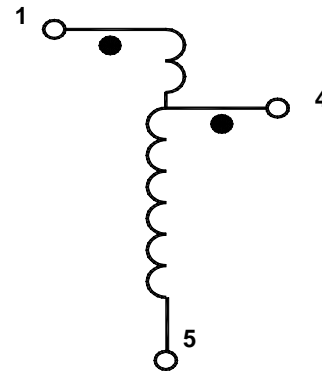
Electrical Specifications @25°C

Parameter	Units	Nominal	Typical	Minimum	Maximum
Frequency Range	20 - 1000	MHz	—	—	—
Insertion Loss ($f_L - f_U$)					
20 - 500 MHz	dB	—	1.8	—	2.0
500 - 1000 MHz	dB	—	2.2	—	2.5

Note: photograph above indicates package only ,not actual unit.



Schematic



Specifications subject to change without notice.

- North America: Tel. (800) 366-2266, Fax (800) 618-8883
- Asia/Pacific: Tel.+81-44-844-8296, Fax +81-44-844-8298
- Europe: Tel. +44 (1344) 869 595, Fax+44 (1344) 300 020

Visit www.macom.com for additional data sheets and product information.