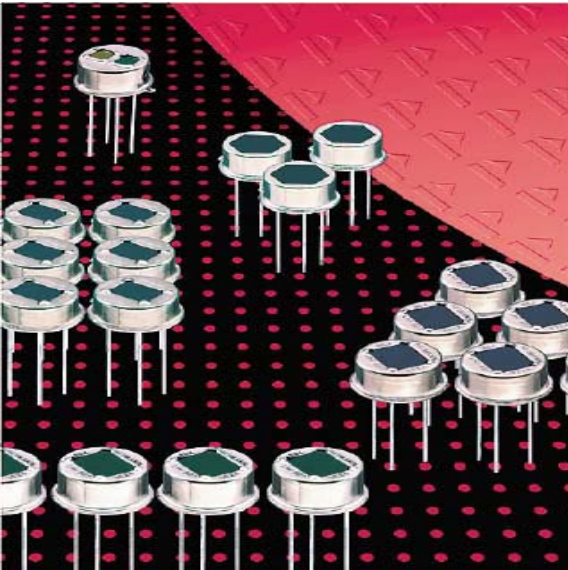


Ceiling Application Detector LHI 1128



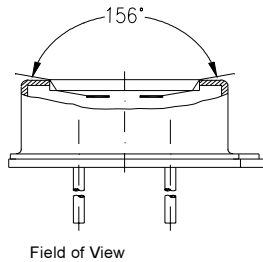
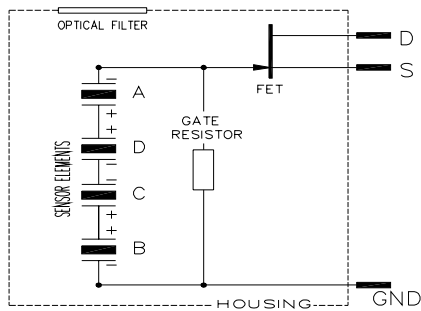
Four Element Detector

Single FET Output

Designed for Ceiling Mount Applications

The **LHi 1128** pyroelectric infrared detector is a special design for motion control in ceiling mount applications. It includes a Quad type pyroelectric ceramic with 4 sensitive elements connected to one FET in source follower connection. Thus it offers a single channel output .

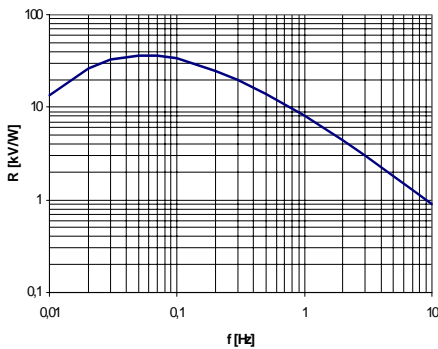
The **LHi 1128** detector is available in **TO-5** housing with infrared filter. It offers excellent common mode performance (match) and low noise.



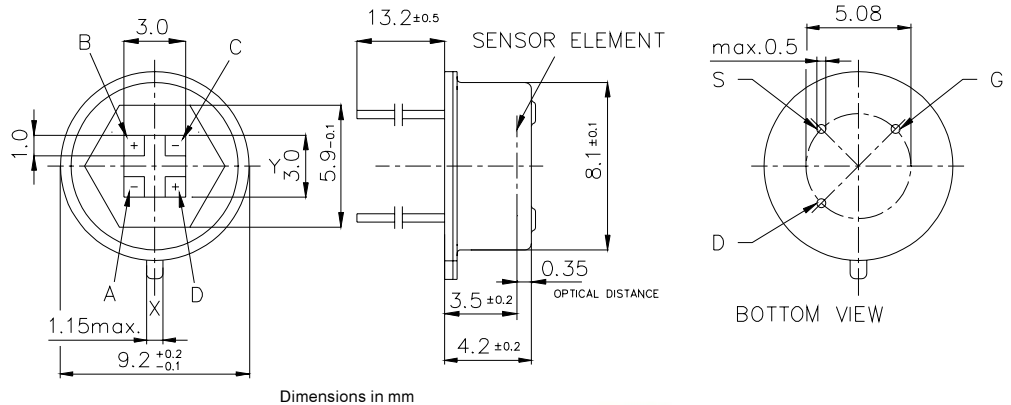
Field of View

| Parameters | LHi 1128 | | | |
|----------------------------------|--------------------|-----------------------|----------------------|-------------------------------|
| | min | typical | max | units condition |
| Element size | 1x1 | | | mm ² (4 elements) |
| Responsivity | 6 000 | 8 000 | | V/W 100°C, 1 Hz |
| Match | | 1 | 10 | % |
| Noise | | 40 | 100 | µVpp 25°C, 0,3...10Hz |
| Offset Voltage | 0,2 | | 1,55 | V R _s =47kΩ, 25°C |
| NEP | | 7,5x10 ⁻¹⁰ | 28x10 ⁻¹⁰ | W √Hz 1Hz Bw, 100°C, 1 Hz |
| D* | 5x10 ⁻⁷ | 19x10 ⁻⁷ | | cm √Hz/W 1Hz Bw, 100°C, 1 Hz |
| Output Impedance | | 5 | 10 | kΩ R _s =47kΩ, 25°C |
| Operating Voltage | 2 | | 15 | V R _s =47kΩ, 25°C |
| Field of View, horizontal | | 156° | | unobstructed |
| vertical | | 144° | | unobstructed |
| Operating Temp. | -40 | | 85 | °C non permanent |
| Storage Temperature | -40 | | 85 | °C non permanent |

Right for modification reserved / WS / 29.6.2001



Frequency Response



Dimensions in mm

Europe:
PerkinElmer Optoelectronics GmbH
 Wenzel Jaksch Str 31
 Wiesbaden / Germany
 Phone +49(0)611 492 0
 Fax +49(0)611 492 170

USA:
PerkinElmer Optoelectronics
 2175 Mission College Blvd
 Santa Clara, CA 95054
 Phone +408 565 0830
 Fax +408 565 0703

Asia:
PerkinElmer Optoelectronics
 47, Ayer Rajah Crescent #06-12
 Singapore 139947
 Phone +65 775 2022
 Fax +65 775 1008

