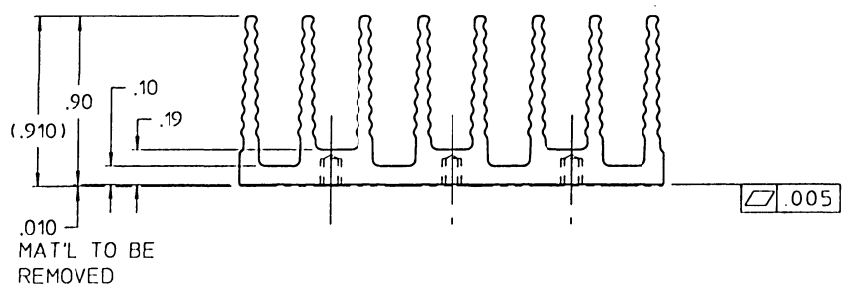
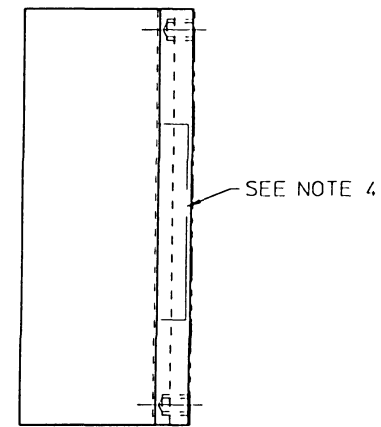
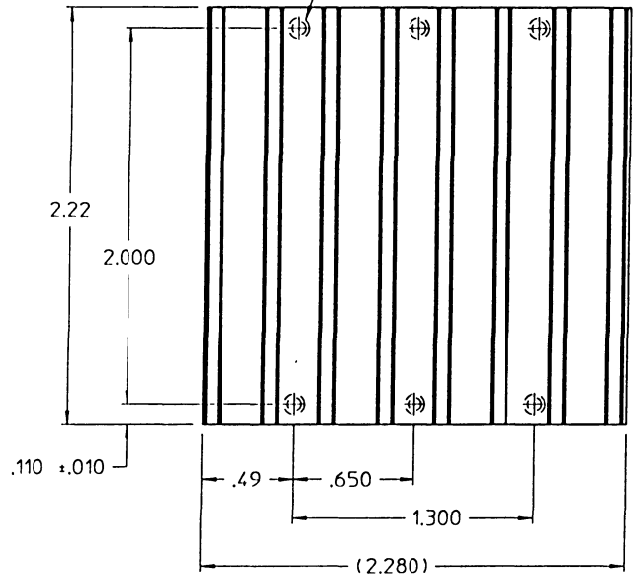


**VICOR CONFIDENTIAL**

THIS DOCUMENT AND THE DATA DISCLOSED  
HEREIN OR HEREWITH IS NOT TO BE REPRODUCED,  
USED, OR DISCLOSED IN WHOLE OR IN PART  
TO ANYONE WITHOUT PERMISSION OF VICOR CORP.

REV.	DESCRIPTION	DATE	APPROVED	
#1	RELEASED FOR DEVELOPMENT	DPK	2/18/97	SWN
#2	M3X.5 WAS #4-40	DPK	3/4/97	SWN
#3	REVISED DRAWING	JMR	3/6/97	SWN
#4	#4-40 TAP WAS M3X.5	DPK	4/22/97	SWN
#5	THD DEPTH .140 WAS .120 .190 WAS .170	DPK	9/17/97	SWN
#6	ADDED TOP RIGHT VIEW. REVISED NOTES	DPK	10/1/97	SWN
#7	2 PLC DIMS 2.20 .49 .90 .10 .15 W/ 3 PLC	DPK	10/17/97	SWN
#8	2.22 WAS 2.20 ADDED +.010 OL	DPK	12/10/97	SWN

#4-40 UNC-2B COLD FORM TAP  
.140 DP MIN, FROM FAR SIDE  
DO NOT BREAK THRU  
(6) PLS



**COPY**

ORIGINAL  
ONLY WHEN STAMPED  
IN RED

- NOTES
1. MAKE FROM VICOR EXTRUSION P/N 15985.
  2. REMOVE ALL BURRS AND SHARP EDGES.
  3. FINISH. CLEAR CHROMATE.
  4. STAMP PART NUMBER AND REVISION USING .15 HIGH CHARACTERS APPROX. WHERE SHOWN

DRAWN BY UNLESS OTHERWISE SPECIFIED DIMENSIONS ARE IN INCHES TOLERANCES ARE FRACTIONS DECIMALS ANGLES XXX+.01 .1° XXX+.005 .5°	DATE 2/97		
THIRD ANGLE PROJECTION 	SIZE <b>C 87131</b>	FSC# NO 15985	DWG NO 15985
10 NOT SCALE DRAWING	SCALE 2-1	SHEET 1 OF 1	REV #8