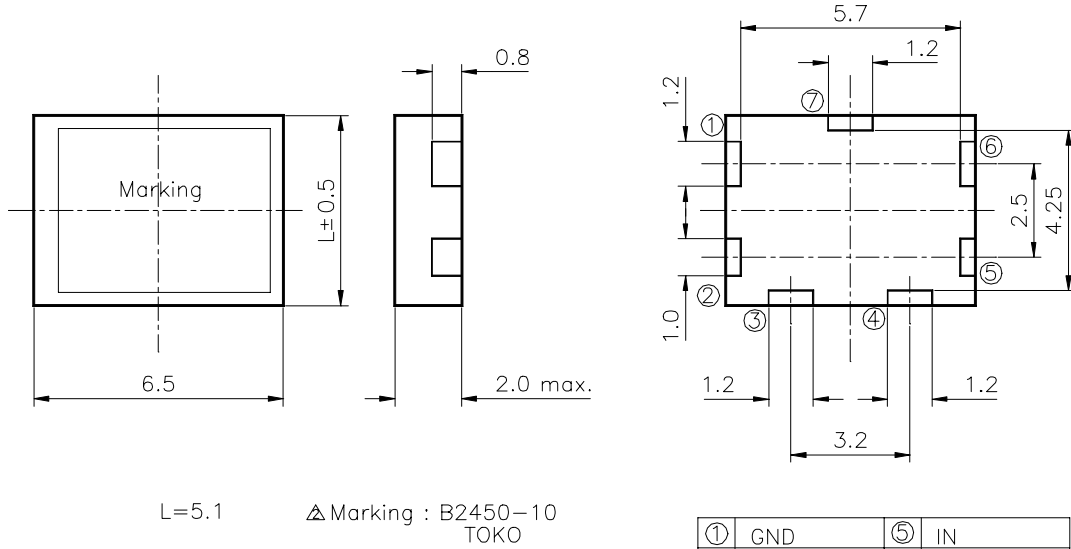


SPECIFICATION OF DIELECTRIC FILTER

TOKO P/No : TDFM1B-2450T-10

1. OUTLINE DIMENSION



L=5.1 Δ Marking : B2450-10
TOKO

①	GND	⑤	IN
②	OUT	⑥	GND
③	GND	⑦	GND
④	GND		

tolerance: ± 0.3
unit : mm

2. ELECTRICAL CHARACTERISTICS

SPECIFICATION

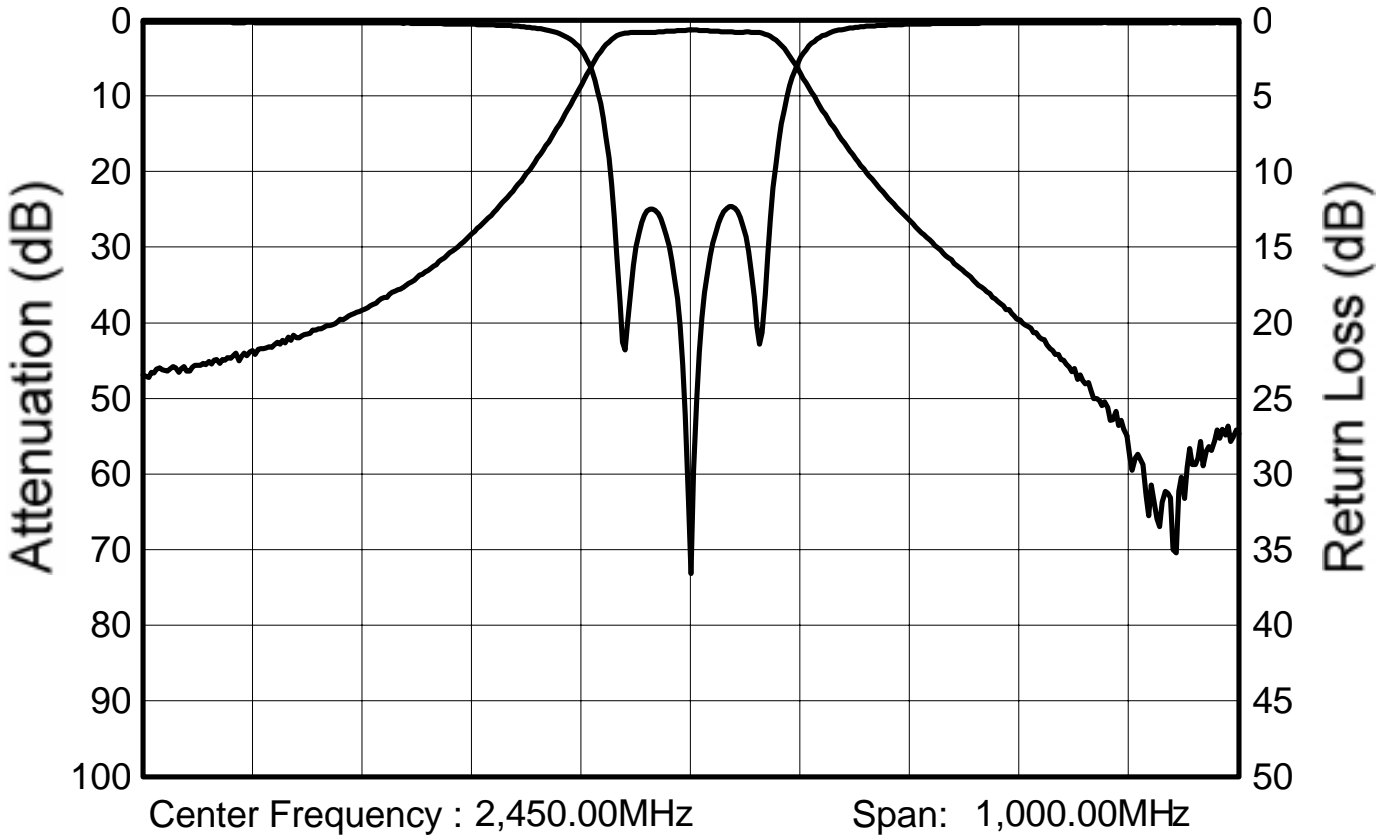
CENTER FREQUENCY (Fo)	:	2450.0 MHz
PASS BAND WIDTH	:	Fo \pm 50.0 MHz
INSERTION LOSS IN PASS BAND	:	2.3dB max.
RIPPLE IN PASS BAND	:	1.0dB max.
V.S.W.R IN PASS BAND	:	2.0 max.
ATTENUATION		
at Fo-430MHz	:	35.0dB min.
at Fo-190MHz	:	24.0dB min.
at Fo+350MHz	:	30.0dB min.
IN/OUT IMPEDANCE	:	50 ohm

(All specifications are an absolute value.)

Rev 2	JULY.22.1997	S. OHTSUKA
Rev 1	FEB.24.1997	S. OHTSUKA
Orig.	MAY.22.1996	E. TANAKA
Issues		Sig.

Test Data of Dielectric Filter

Toko No. : TDFM1B-2450T-10



Passband Insertion Loss	1.62dB
Passband Ripple	0.33dB
Passband V.S.W.R.	1.64
Attenuation	
at 2,020.00MHz	45.35dB
at 2,260.00MHz	26.86dB
at 2,800.00MHz	46.08dB

Date : 96.08.28

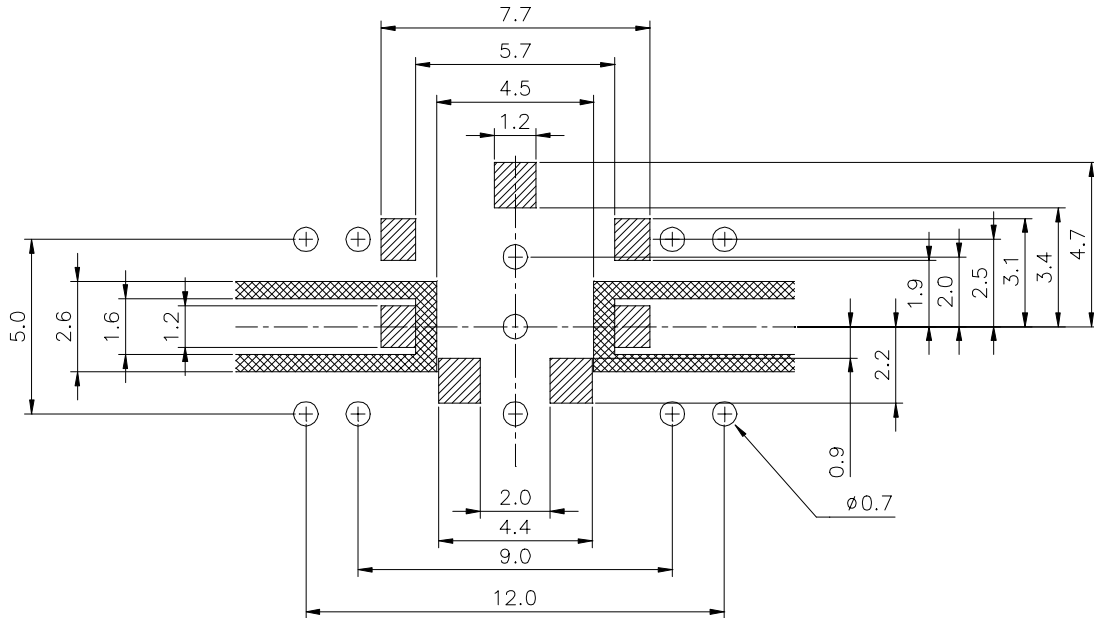
Instrument : WILTRON 37269A



Toko, INC.

PCB Recommended Pattern For Dielectric Filter

TOKO P/No : TDFM1B-2450T-10



 Parts of not coppered.
(Other parts are coppered)

 Soldering parts.

Back plane is all Coppered.
All holes are plated-through holes.

SUBSTRATE MATERIAL:

BT Resin CCL-H870 t=0.9mm.

CCI-H870's typical dielectric constant is 3.6 at 1GHz.

CAUTION:

All terminals of this filter are connected to GND.

Therefore, it must be used without DC voltage.