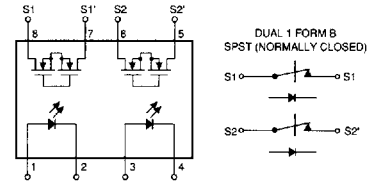
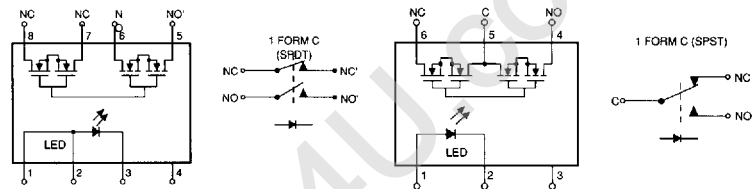


## Dual 1 Form B Relays: SPST, NC



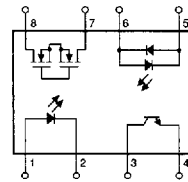
DIP Part Number	Output Characteristics		Transfer Characteristics		Input Characteristics		I/O Isolation (Minimum) (Vrms)	Package		
	Load Voltage (Max.) (V)	Load Current (Max. Recommended) (mA) ac/dc	ON-Resistance (Max. at 25°C) (Ω) ac/dc	Current Limit (Typical at 25°C) (mA) ac/dc	Operate Time ton (ms) IF = 5 mA, *IF = 10 mA	LED Operate Current (minimum mA) 25°C Test Specifications			Recommended Current for 85°C Operation	
LH1523AB	200	140	15		3.0*	3.0*	2.0	5.0	3750	8-Pin
LH1521AB	350	110	25		3.0	3.0	2.0	5.0	3750	8-Pin

## 1 Form C Relays: SPDT



LH1512AB	200	200	15	360	3.0*	3.0*	2.0	5.0	3750	8-Pin
LH1537AB/AT	250	150	16		4.0*	4.0*	3.0	7.0	3750	6- or 8-Pin
LH1502AB	350	150	25	270	6.0*	3.0*	2.0	5.0	3750	8-Pin
LH1527AB/AT	400	125	33		4.0*	4.0*	3.0	7.0	3750	6- or 8-Pin

## Telecom Switches



DIP Part Number	Contact Form	Solid-State Relay			LED Operate Current (minimum mA)		Optocoupler		I/O Isolation (Minimum) (Vrms)	Package
		Load Voltage (Max.) (V)	Load Current (Max. Recommended) (mA) ac/dc	ON-Resistance (Max. at 25°C) (Ω) ac/dc	25°C Test Specifications	Recommended Current for 85°C Operation	Current Transfer Ratio (min) (%)	LED Forward Current (mA)		
LH1528AB1	1B	350	150	25	2.0	5.0	33	50	3750	8-Pin
LH1529AB1	1A	350	120	25	2.0	5.0	33	50	3750	8-Pin
LH1529BB1	1A	350	120	25	2.0	5.0	100	50	3750	8-Pin
LH1548ACE1	1A	400	120	33	0.5	1.5	33	50	1500	18P SOP
LH1549HB1	1A	400	120	33	1.0	3.0	33	120	5000	8-Pin

## MOSFET Drivers/Specialty Relays

DIP Part Number	Description	Load Voltage (Max.) (V)	Load Current (Max. Recommended) (mA) ac/dc	ON-Resistance (Max. at 25°C) (Ω) ac/dc	Operate Time ton (Max.) (ms) IF = 5 mA, *IF = 10 mA	LED Operate Current (minimum mA) 25°C Test Specifications	I/O Isolation (Minimum) (Vrms)	Package
ATT1800AT1	MOSFET Driver	300	NA	NA	5 μs	5 μs	3750	6-Pin
LH1262BB	Dual MOSFET Driver	NA	NA	NA	35 μs typ	90 μs typ	1500	8-Pin
LH1514AB	High-Frequency 2 Form A	15	150	8	1.0*	1.0*	3750	8-Pin
LH1571AB	Protected Power Feed	250	250	5	10.0	3.0	—	8-Pin
LH1541AT	Low Capacitance	250	55	160	0.25	0.25	3750	6-Pin
LH1544AB	Low Capacitance (Dual)	250	55	160	0.25	0.25	3750	8-Pin
ATD2559AB	High-Voltage Interface	400	120	28	5.0	5.0	3750/1500	8-Pin/18P SOP