

0.53" Light Bar

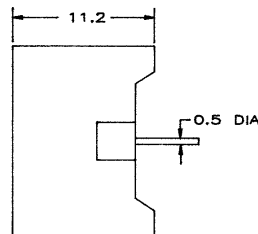
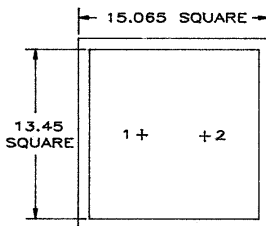
FEATURES

- 0.53" light bar
- Suitable for backlighting
- Uniform light emission

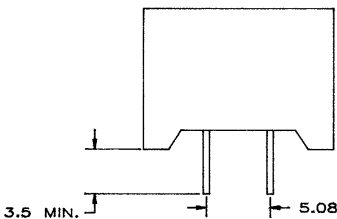
OPTO-ELECTRICAL CHARACTERISTICS (Ta = 25°C)

PART NO.	PEAK WAVE LENGTH (nm)	EMITTED COLOR	MAXIMUM RATINGS					OPTO ELECTRICAL CHARACTERISTICS						
			IF(mA)	VR(V)	PD (mW)	T _{opr} (°C)	T _{stg} (°C)	VF(V)			IR(μA)		IV(mcd)	
								typ.	max.	@mA	max.	@VR	typ.per die	@mA
MTLB2160-G	567	Green	30	5	85	-25~+85	-25~+100	4.2	6.0	40	100	5	6.8	10
MTLB3160-Y	585	Yellow	30	5	85	-25~+85	-25~+100	4.2	6.0	40	100	5	5.5	10
MTLB4160-O	635	Orange	30	5	85	-25~+85	-25~+100	4.2	6.0	40	100	5	7.8	10
MTLB4160-HR	635	Hi-Eff Red	30	5	85	-25~+85	-25~+100	4.2	6.0	40	100	5	7.8	10
MTLB7160-UR	660	Ultra Red	30	4	70	-25~+85	-25~+100	3.8	5.0	40	100	4	20.3	20

PACKAGE DIMENSIONS AND PIN FUNCTIONS



PIN NO. FUNCTION
 1. CATHODE
 2. ANODE



1. ALL DIMENSIONS ARE IN mm, TOLERANCE IS ± 0.25 mm UNLESS OTHERWISE SPECIFIED.
2. THE SLOPE ANGLE OF ANY PIN MAY BE $\pm 5.0^\circ$ MAX.