

DIPLEXER FILTER MODULES

EuroDOCSIS 2.0

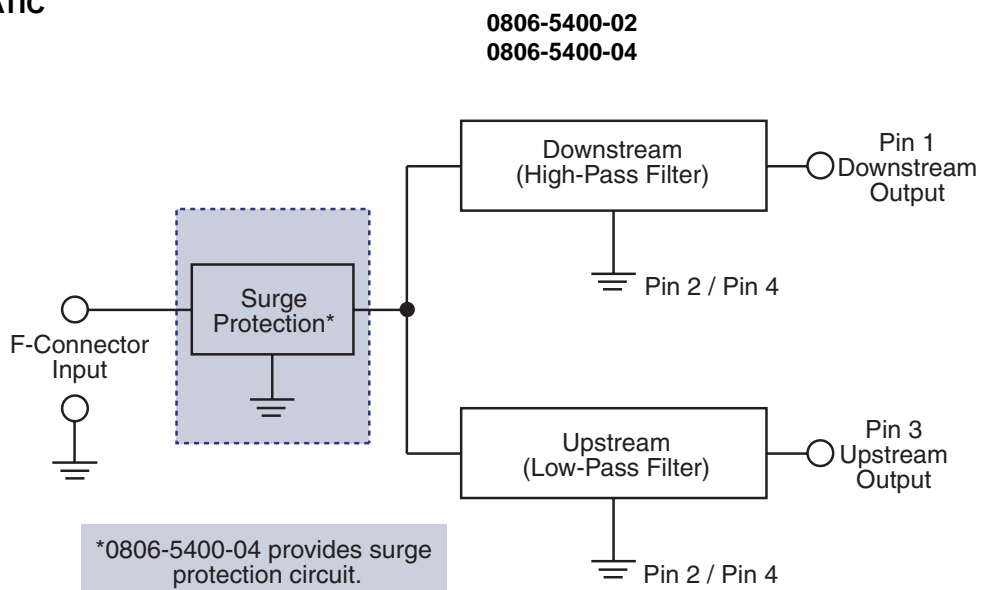
CM02401

- Optimized for use in cable modems, cable TV set-top boxes and PCI card applications
- Designed to meet European Data Over Cable Service Interface Specification (EuroDOCSIS) 2.0
- Surge protection per IEC 61000-4-5 Class 4
- Excellent insertion loss and return loss characteristics
- Pre-tuned, shielded modules with integral coaxial F-connector
- Metal housing minimizes EMI for superior performance

ELECTRICAL SPECIFICATIONS at 25° C

| Low Pass Filter | | | | |
|-------------------------|----------------|-------------------------|-------------------------|---------------|
| Passband Insertion Loss | | Stopband Insertion Loss | | Return Loss |
| 5MHz - 67MHz | | 88MHz - 126MHz | 126MHz - 860MHz | 5MHz - 67MHz |
| 1.5dB max | | 50dB min | 48dB min | 12dB min |
| High Pass Filter | | | | |
| Passband Insertion Loss | | | Stopband Insertion Loss | Return Loss |
| 88MHz | 88MHz - 102MHz | 103MHz - 860MHz | 5MHz - 63MHz | 63MHz - 65MHz |
| 1.8dB max | 1.5dB max | 1.0dB max | 50dB min | 48dB min |

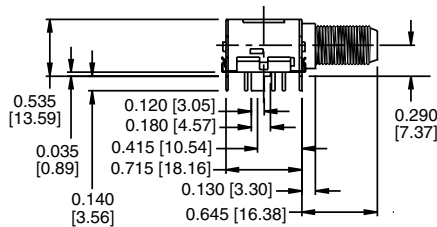
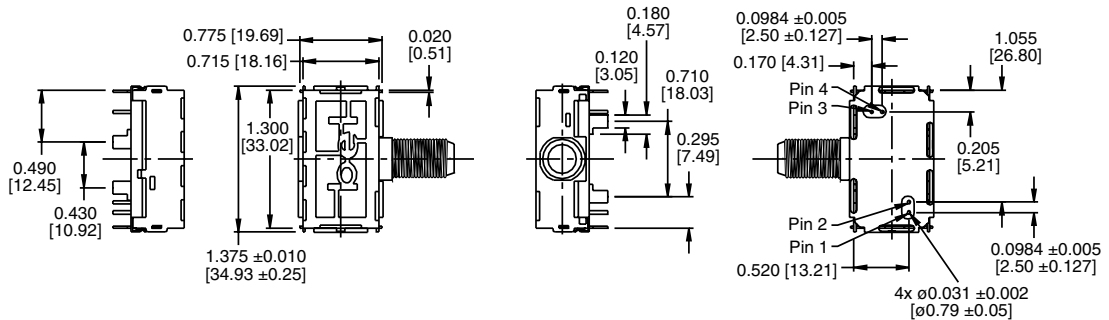
SCHEMATIC



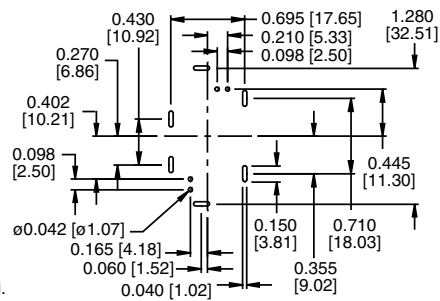
CM02401

MECHANICAL

0806-5400-02

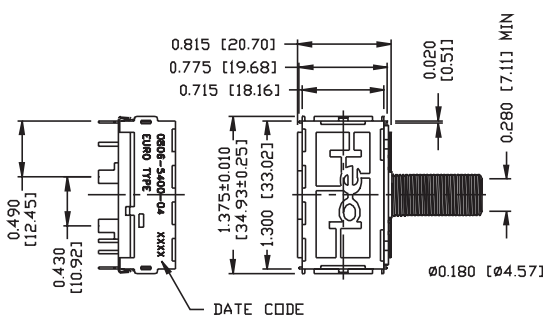
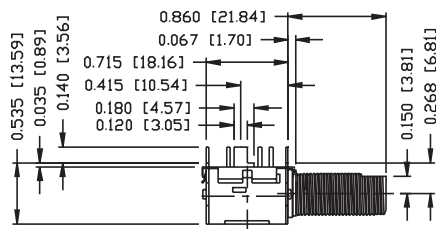


Suggested PCB Pad Layout



Dimensions are in inches [millimeters].
Standard dimension tolerance is ±0.020 [0.51] unless otherwise noted.

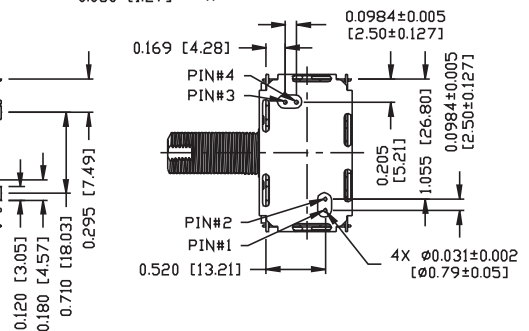
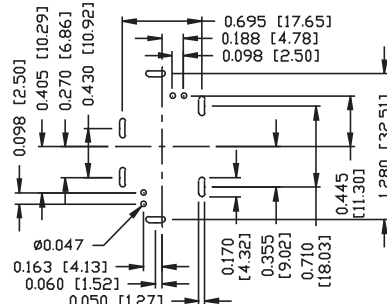
0806-5400-04



NOTES:

- STANDARD MARKING REFER TO DDC. HAND-WORK-04.
- PACKAGE CODE : 'ZEA001'.
- CONNECTOR HOLDING STRENGTH: ABSOLUTE MAX. TORQUE STRENGTH TO BE 6.78 Nm.

SUGGESTED PCB PAD LAYOUT



©2005 Bel Fuse Inc. Specifications subject to change without notice. 06.05

CORPORATE

Bel Fuse Inc.
206 Van Vorst Street
Jersey City, NJ 07302
Tel 201-432-0463
Fax 201-432-9542
www.belfuse.com

FAR EAST

Bel Fuse Ltd.
8F / 8 Luk Hop Street
San Po Kong
Kowloon, Hong Kong
Tel 852-2328-5515
Fax 852-2352-3706
www.belfuse.com

EUROPE

Bel Fuse Europe Ltd.
Preston Technology Management Centre
Marsh Lane, Suite G7, Preston
Lancashire, PR1 8UD, U.K.
Tel 44-1772-556601
Fax 44-1772-888366
www.belfuse.com