

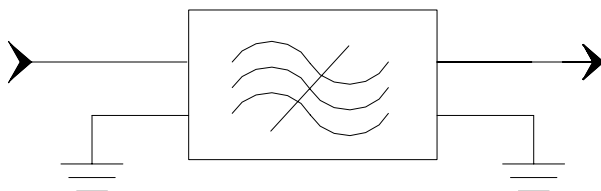
### Specifications

Parameter	Unit	Minimum	Typical	Maximum
Center Frequency	MHz	69.95	70	70.05
Insertion Loss	dB	-	25.5	27
3 dB Bandwidth	MHz	10.75	10.8	10.85
Selectivity	f0±5.8MHz	dBc	41	-
	f0±6.0MHz	dBc	52	-
	f0±6.4MHz	dBc	54	-
	f0±10.4MHz	dBc	55	-
Passband Variation	dB	-	0.5	1
Ultimate Rejection	dB	50	55	-
Absolute delay	usec	-	3.75	4
Substrate Material		YZ-LiNbO <sub>3</sub>		
Ambient Temperature	°C	25		
Package Size		DIP3512 (35.2x12.7x5.2mm <sup>3</sup> )		

**Notes:**


1. All specifications are based on the test circuit shown
2. In production, devices will be tested at room temperature to a guardbanded specification to ensure electrical compliance over temperature
3. Electrical margin has been built into the design to account for the variations due to temperature drift and manufacturing tolerances
4. This is the optimum impedance in order to achieve the performance shown

### Matching Configuration

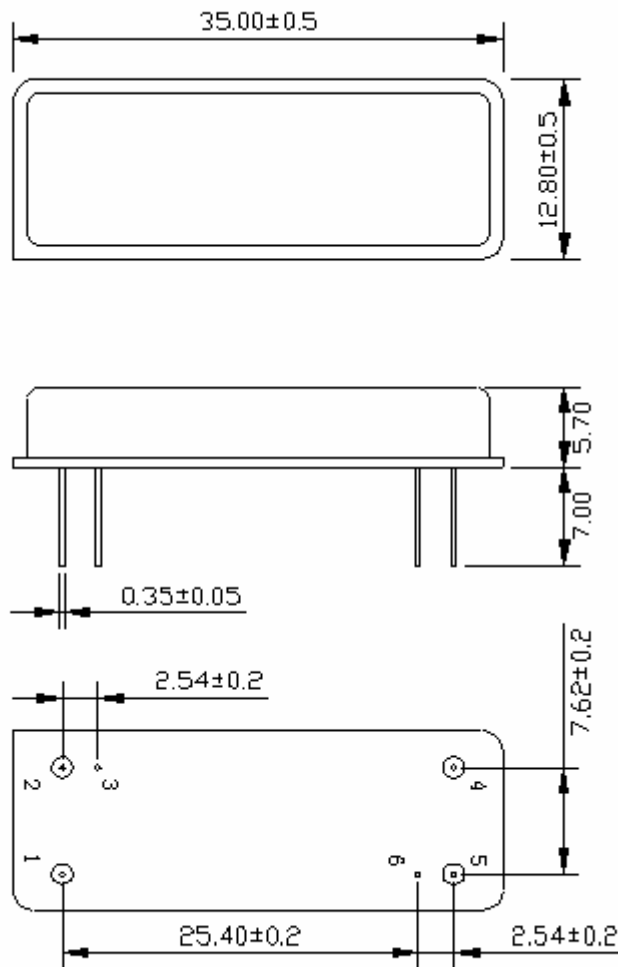


**Source/Load Impedance=50 ohm**

Notes - Component values may change depending on board layout.

	<b>SIPAT Co., Ltd.</b> ( CETC No. 26 Research Institute ) Nanping Huayuan Road No. 14 Chongqing, China, 400060	Part Number	LBN07089	
		Rev. Date	2004-12-18	
		Rev.	1.0	Page

*Package Dimension*

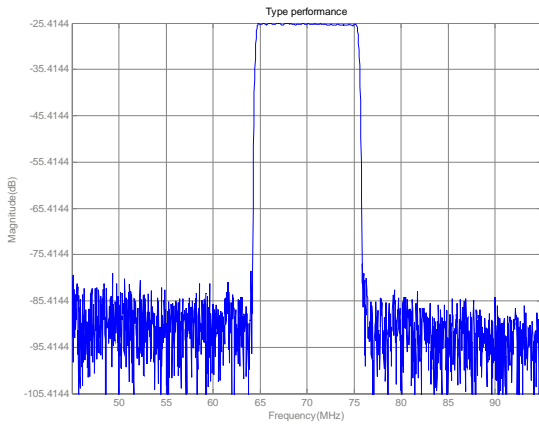


**SIPAT Co., Ltd.**  
( CETC No. 26 Research Institute )  
Nanping Huayuan Road No. 14  
Chongqing, China, 400060

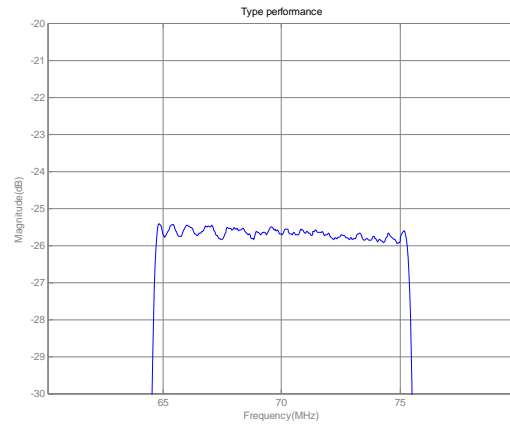
Part Number	LBN07089	
Rev. Date	2004-12-18	
Rev.	1.0	Page 2/3

*Typical Performance*

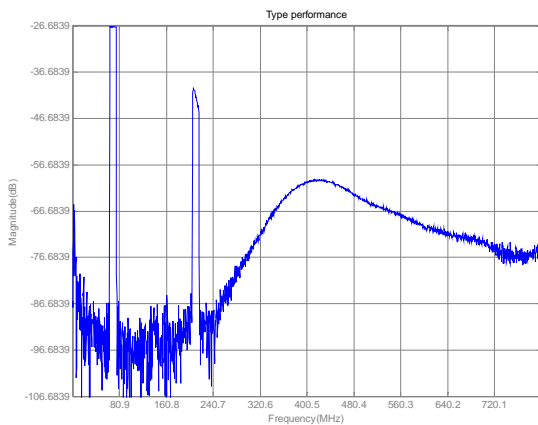
Frequency Respond



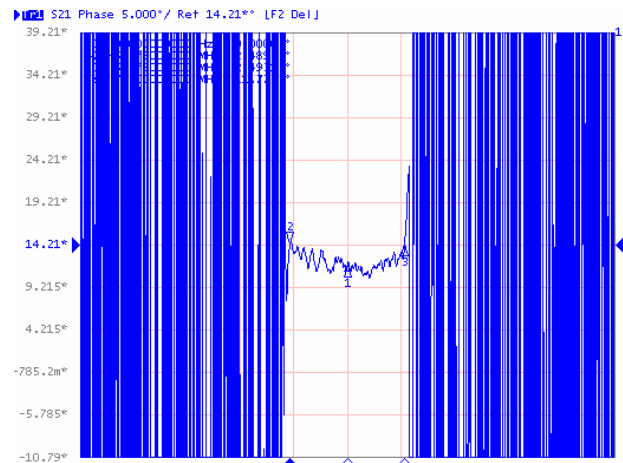
Passband Respond



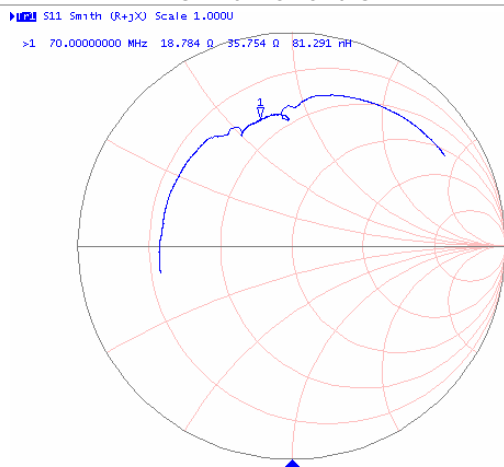
Wideband Respond



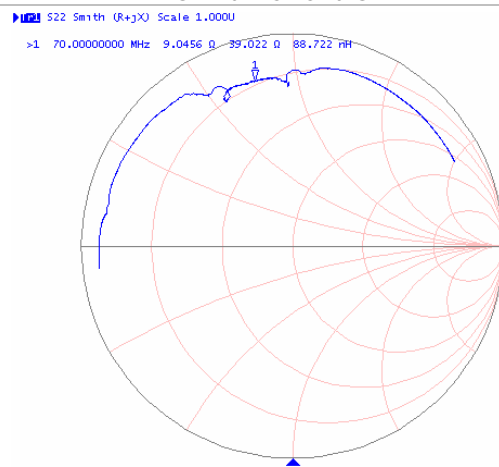
Phase Linearity ( $f_0 \pm 5.37\text{MHz}$ )



Smith Chart S11



Smith Chart S22



**SIPAT Co., Ltd.**  
( CETC No. 26 Research Institute )  
Nanping Huayuan Road No. 14  
Chongqing, China, 400060

Part Number	LBN07089	
Rev. Date	2004-12-18	
Rev.	1.0	Page 3/3