

QUARTZ CRYSTAL OSCILLATOR

■ GENERAL DESCRIPTION

The NJU6375 series is a C-MOS quartz crystal oscillator which consists of an oscillation amplifier and a 3-state output buffer.

This series are classed into six versions A, B, C and H, J, K according to their oscillation frequency range mentioned in the line-up table.

The oscillation amplifier incorporates feed-back resistance and oscillation capacitors(Cg, Cd), therefore, it requires no external component except quartz crystal.

Driverbility of the 3-state output buffer is 24mA in A, B and C versions, 16mA in H, J and K versions, thus it can drive both of TTL and C-MOS load.

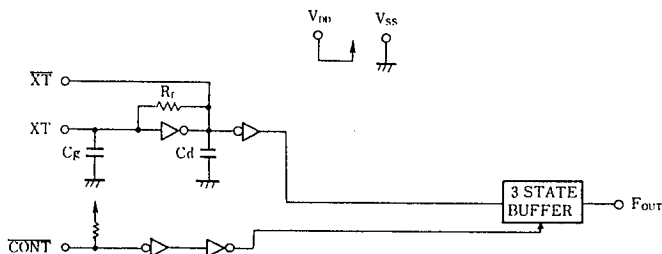
■ FEATURES

- Operating Voltage. -- 4.0~6.0V
- Maximum Oscillation Frequency (See Line-Up Table)
- Low Operating Current
- High Fan-out --  $I_{OL}/I_{OH}=24mA$  (A, B and C versions)  
--  $I_{OL}/I_{OH}=16mA$  (H, J and K versions)
- 3-state Output Buffer
- Oscillation Capacitors Cg and Cd on-chip
- Oscillation and/or Output Stand-by Function
- Package Outline -- CHIP / EMP 8
- C-MOS Technology

■ LINE-UP TABLE

Type No.	Recommended Osc. Freq.	Output Freq.	Cg, Cd
NJU6375A	20~35MHz	$f_o$	28pF
6375B	30~50MHz		20pF
6375C	45~75MHz		17pF
NJU6375H	20~35MHz		28pF
6375J	30~50MHz		20pF
6375K	45~75MHz		17pF

■ BLOCK DIAGRAM



■ PACKAGE OUTLINE



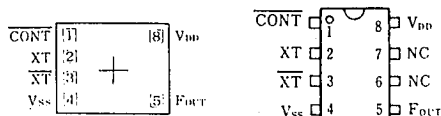
NJU6375XC



NJU6375XE

4

■ PAD LOCATION/PIN CONFIGURATION



■ COORDINATES

Unit:  $\mu m$

No.	PAD	X	Y
1	CONT	-408	248
2	XT	-408	81
3	XT	-408	-86
4	VSS	-408	-248
5	FOUT	464	-248
8	VDD	464	248

Chip Size : 1.29 X 0.8mm  
 Chip Center : X=0 $\mu m$ , Y=0 $\mu m$   
 Chip Thickness : 400 $\mu m \pm 30\mu m$   
 (Note) No.6 and 7 terminals are only for package type information. There are no PAD on the chip.

**■ TERMINAL DESCRIPTION**

NO.	SYMBOL	F U N C T I O N
1	$\overline{\text{CONT}}$	3-State Output Control
		$\overline{\text{CONT}}$ Output ( $F_{\text{OUT}}$ )
		H Output Frequency $f_0$
		L Output High Impedance
2	XT	Quartz Crystal Connecting Terminals
3	$\overline{\text{XT}}$	
4	$V_{\text{SS}}$	GND
5	$F_{\text{OUT}}$	Output frequency $f_0$
8	$V_{\text{DD}}$	+ 5V

**■ ABSOLUTE MAXIMUM RATINGS**

 (  $T_a=25^\circ\text{C}$  )

P A R A M E T E R	S Y M B O L	R A T I N G S	U N I T
Supply Voltage	$V_{\text{DD}}$	-0.5 ~ +7.0	V
Input Voltage	$V_{\text{IN}}$	$V_{\text{SS}}-0.5 \sim V_{\text{DD}}+0.5$	V
Output Voltage	$V_{\text{O}}$	-0.5 ~ $V_{\text{DD}}+0.5$	V
Input Current	$I_{\text{IN}}$	$\pm 10$	mA
Output Current	$I_{\text{O}}$	$\pm 25$	mA
Power Dissipation	$P_{\text{D}}$	200 (EMP)	mW
Operating Temperature Range	$T_{\text{opr}}$	-40 ~ +85	$^\circ\text{C}$
Storage Temperature Range	$T_{\text{stg}}$	-55 ~ +125	$^\circ\text{C}$

(Note) Decoupling capacitor should be connected between  $V_{\text{DD}}$  and  $V_{\text{SS}}$  due to the stabilized operation for the circuit.

## ■ ELECTRICAL CHARACTERISTICS

• NJU6375A/B/C

 (  $T_a=25^{\circ}\text{C}$ ,  $V_{DD}=5\text{V}$  )

PARAMETER	SYMBOL	CONDITIONS	MIN	TYP	MAX	UNIT
Operating Voltage	$V_{DD}$		4		6	V
Operating Current	$I_{DD1}$	A Version $f_{osc}=24\text{MHz}$ , No Load			25	mA
	$I_{DD2}$	B Version $f_{osc}=48\text{MHz}$ , No Load			30	
	$I_{DD3}$	C Version $f_{osc}=48\text{MHz}$ , No Load			35	
Stand-by Current	$I_{st}$	$\overline{\text{CONT}}, \text{XT}=\overline{V_{SS}}$ , No Load (Note 1)			1	$\mu\text{A}$
Input Voltage	$V_{IH}$		2.0		5.0	V
	$V_{IL}$		0		0.8	
Output Current	$I_{OH}$	$V_{DD}=5\text{V}$ , $V_{OH}=4.5\text{V}$	24			mA
	$I_{OL}$	$V_{DD}=5\text{V}$ , $V_{OL}=0.5\text{V}$	24			
Input Current	$I_{IN}$	$\overline{\text{CONT}}$ Terminal, $\overline{\text{CONT}}=\overline{V_{SS}}$	125	250	500	$\mu\text{A}$
3-St Off-leakage Current	$I_{oz}$	$\overline{\text{CONT}}=\overline{V_{SS}}$ , $F_{OUT}=\overline{V_{SS}}$ or $V_{DD}$			$\pm 0.1$	$\mu\text{A}$
Internal Capacitor	$C_g, C_d$	A Version		28		pF
		B Version		20		
		C Version		17		
Max. Oscillation Freq.	$f_{MAX}$	A Version	35			MHz
		B Version	50			
		C Version	75			
Output Signal Symmetry	SYM	$C_L=15\text{pF}$ at 1.4V	45	50	55	%
		$C_L=15\text{pF}$ at 2.5V				
Output Signal Rise Time	$t_{r1}$	$C_L=15\text{pF}$ , $R_L=390\Omega$ , 20%~80%		2		ns
	$t_{r2}$	$C_L=15\text{pF}$ , $R_L=390\Omega$ , 0.4~2.4V		2		
	$t_{r3}$	$C_L=15\text{pF}$ , 10~90%		3		
Output Signal Fall Time	$t_{f1}$	$C_L=15\text{pF}$ , $R_L=390\Omega$ , 80%~20%		2		ns
	$t_{f2}$	$C_L=15\text{pF}$ , $R_L=390\Omega$ , 2.4~0.4V		2		
	$t_{f3}$	$C_L=15\text{pF}$ , 90~10%		3		

 (Note 1) Excluding input current on  $\overline{\text{CONT}}$  terminal.

4

• NJU6375H/J/K

 (  $T_a=25^{\circ}\text{C}$ ,  $V_{DD}=5\text{V}$  )

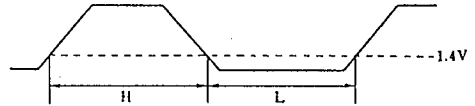
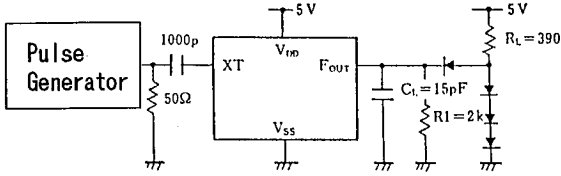
PARAMETER	SYMBOL	CONDITIONS	MIN	TYP	MAX	UNIT
Operating Voltage	$V_{DD}$		4		6	V
Operating Current	$I_{DD1}$	H Version $f_{OSC}=24\text{MHz}$ , No Load			25	mA
	$I_{DD2}$	J Version $f_{OSC}=48\text{MHz}$ , No Load			30	
	$I_{DD3}$	K Version $f_{OSC}=48\text{MHz}$ , No Load			35	
Stand-by Current	$I_{st}$	$\overline{\text{CONT}}$ , $X_T=V_{SS}$ , No Load (Note 2)			1	$\mu\text{A}$
Input Voltage	$V_{IH}$		2.0		5.0	V
	$V_{IL}$		0		0.8	
Output Current	$I_{OH}$	$V_{DD}=5\text{V}$ , $V_{OH}=4.5\text{V}$	16			mA
	$I_{OL}$	$V_{DD}=5\text{V}$ , $V_{OL}=0.5\text{V}$	16			
Input Current	$I_{IN}$	$\overline{\text{CONT}}$ Terminal, $\overline{\text{CONT}}=V_{SS}$	125	250	500	$\mu\text{A}$
3-St Off-leakage Current	$I_{OZ}$	$\overline{\text{CONT}}=V_{SS}$ , $F_{OUT}=V_{SS}$ or $V_{DD}$			$\pm 0.1$	$\mu\text{A}$
Internal Capacitor	$C_g, C_d$	H Version		28		pF
		J Version		20		
		K Version		17		
Max. Oscillation Freq.	$f_{MAX}$	H Version	35			MHz
		J Version	50			
		K Version	75			
Output Signal Symmetry	SYM	$C_L=15\text{pF}$ at 1.4V	40	50	60	%
		$C_L=15\text{pF}$ at 2.5V	45	50	55	
Output Signal Rise Time	$t_{r1}$	$C_L=15\text{pF}$ , $R_L=390\Omega$ , 0.4~2.4V		4	7	ns
	$t_{r2}$	$C_L=50\text{pF}$ , 10~90%		5	7	
Output Signal Fall Time	$t_{f1}$	$C_L=15\text{pF}$ , $R_L=390\Omega$ , 2.4~0.4V		4	7	ns
	$t_{f2}$	$C_L=50\text{pF}$ , 90~10%		5	7	

 (Note 2) Excluding input current on  $\overline{\text{CONT}}$  terminal.

■ MEASUREMENT CIRCUITS 1 (NJU6375A/B/C)

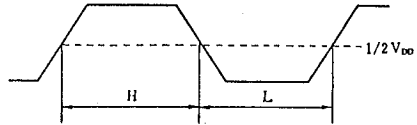
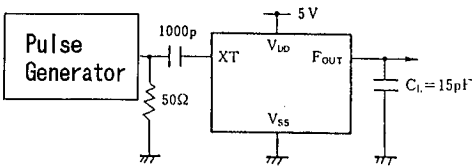
(1-1) Output Signal Symmetry

•TTL



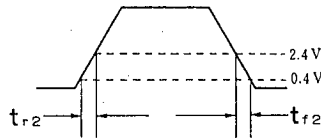
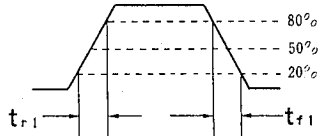
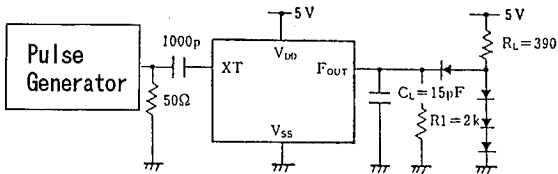
4

•C-MOS

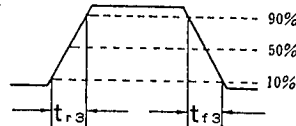
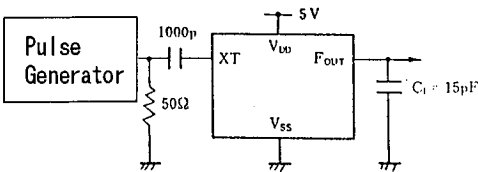


(1-2) Output Signal Rise / Fall Time

•TTL



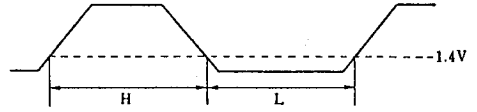
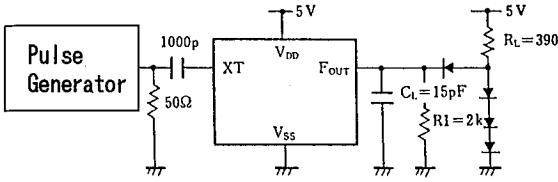
•C-MOS



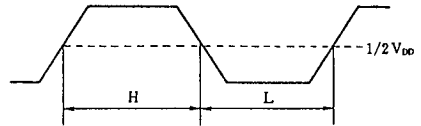
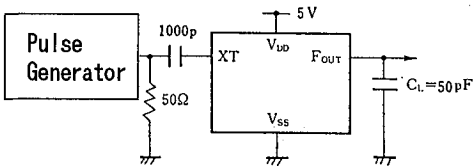
■ MEASUREMENT CIRCUITS 2 (NJU6375H/J/K)

(2-1) Output Signal Symmetry

•TTL

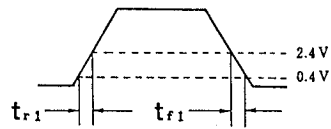
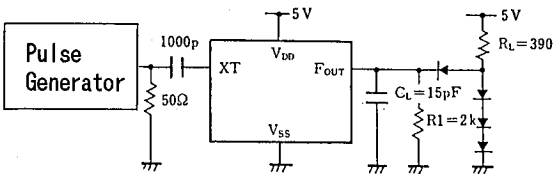


•C-MOS

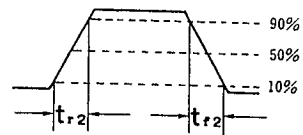
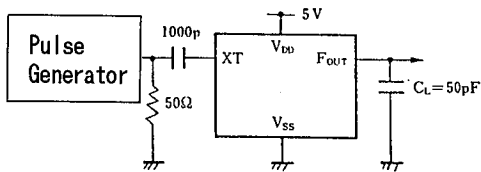


(2-2) Output Signal Rise / Fall Time

•TTL



•C-MOS



# NJU6375 Series

---

MEMO

**[CAUTION]**

The specifications on this databook are only given for information, without any guarantee as regards either mistakes or omissions. The application circuits in this databook are described only to show representative usages of the product and not intended for the guarantee or permission of any right including the industrial rights.