

INTEGRATED CONNECTOR MODULES

0843-2B1T-70 10/100Base-TX MagJack® 2 x 1 wih LEDs

LED POLARITY			
PIN 12	PIN 11	PIN 10	COLOR
-	+	/	GREEN
/	+	-	ORANGE

ELECTRICAL CHARACTERISTICS @ 25°C

URNS RATIO

TX 1CT : 1CT ±2%
 RX 1CT : 1CT ±2%

QCL @ 100kHz/100mVRMS
 8mA DC BIAS

400µ H MIN.

INS. LOSS

1MHz TO 100MHz -1.0 dB MAX

RETURN LOSS (TX/RX)

1.0 THRU 30 MHz 18 dB MIN
 30.1 THRU 60 MHz 18-[20Log(f/30MHz)] dB MIN
 60.1 THRU 80 MHz 12 dB MIN

CROSS TALK

500kHz - 100MHz -35 dB MIN

CM TO CM REJ

100kHz - 100MHz -30 dB MIN

CM TO DM REJ

100kHz - 100MHz -35 dB MIN

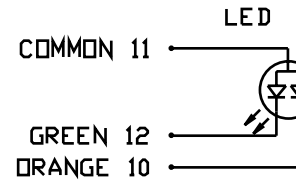
HIPOT (Isolation Voltage): 1500 Vrms

LED

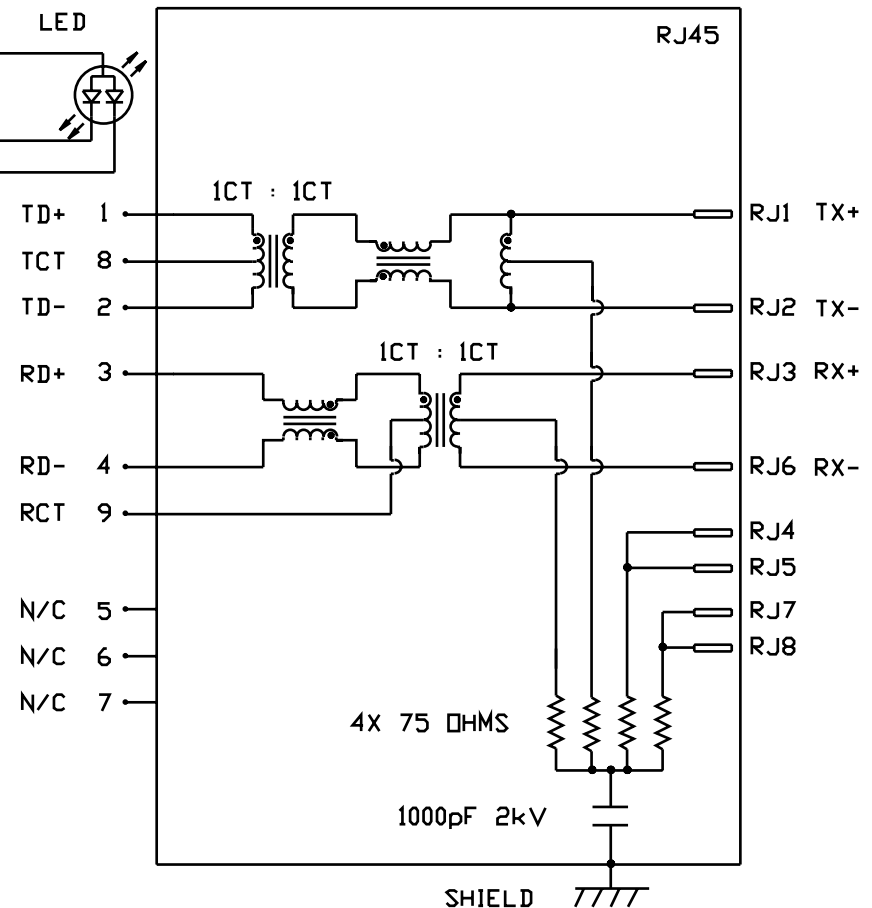
VF (FORWARD VOLTAGE)	IF=20mA	GREEN	2.2V TYP.
		ORANGE	2.0V TYP.
λD (DOMINANT WAVELENGTH)	IF=20mA	GREEN	565nm TYP.
		ORANGE	610nm TYP.

NOTES:

SCHEMATIC & ELECTRICAL CHARACTERISTICS ARE IDENTICAL FOR PORT 1 & PORT 2.

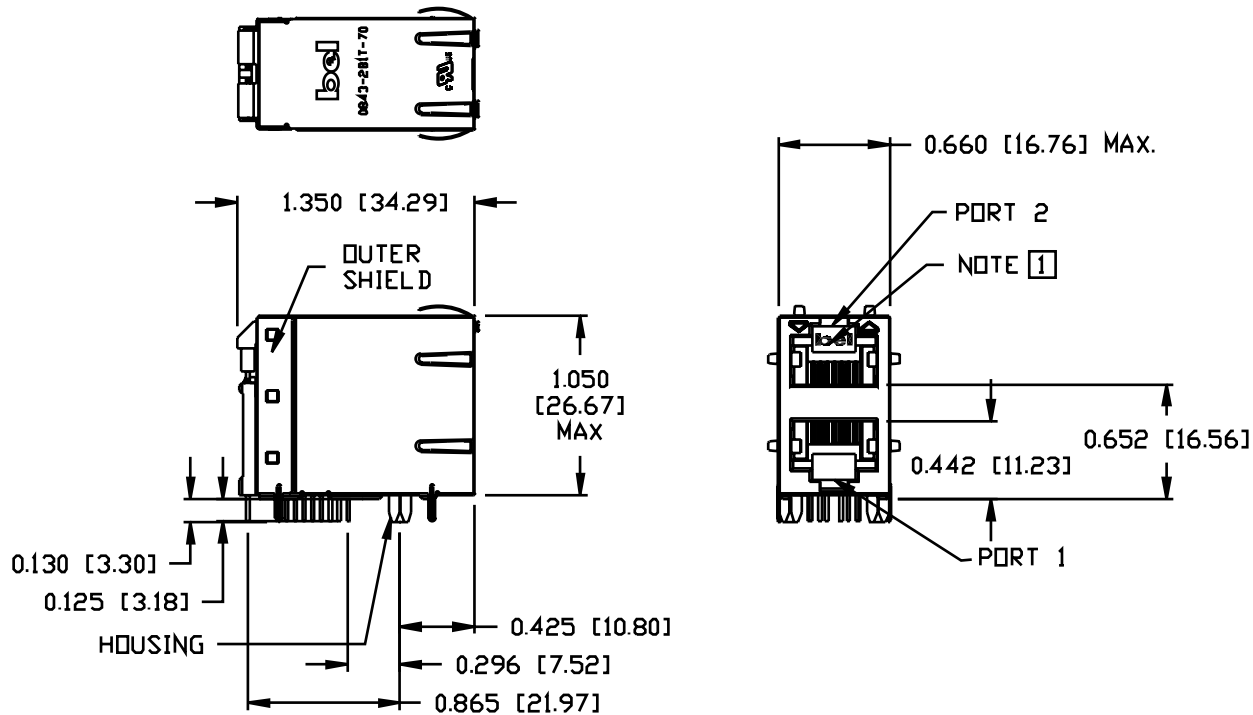


SCHEMATIC FOR SINGLE PORT



INTEGRATED CONNECTOR MODULES

0843-2B1T-70 10/100Base-TX MagJack® 2 x 1 with LEDs



NOTES:

- PLASTIC HOUSING: THERMOPLASTIC PBT
FLAMMABILITY RATING UL 94V-0
- CONTACT PLATING: 50 MICRO-INCH HARD GOLD PLATING
- OUTPUT PINS: TIN-COATED COPPER WIRE, DIA 0.018 INCH.
- SOLDERABILITY: PER MIL STD. 202, METHOD 208.
- METAL SHIELD: TIN/LEAD PLATED COPPER ALLOY.

[1] JACK CAVITY CONFORMS TO FCC RULES AND REGULATIONS, PART 68 SUBPART F.

[1] US UL RECOGNIZED - FILE #E196366 AND E169987.

PACKING INFORMATION

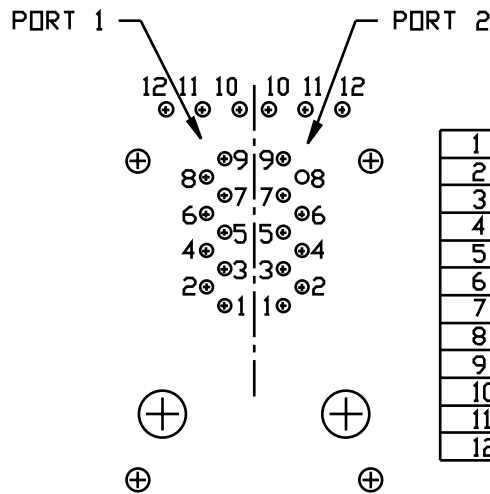
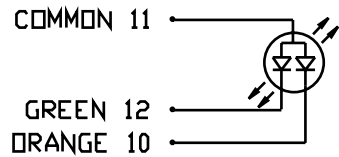
- PACKING TRAY: 0200-0148-36 (TOP)
0200-0148-34 (BOTTOM)
- PACKING QUANTITY: 40 PCS FINISHED GOOD PER TRAY
6 TRAYS (240 PCS FINISHGOOD) PER CARTON BOX.

NOTE: CARDBOARD ARE PLACED BETWEEN LAYERS OF PACKING TRAY INSIDE CARTON BOX.
(INCLUDE THE UPPERMOST AND LOWEREST TRAY)

INTEGRATED CONNECTOR MODULES

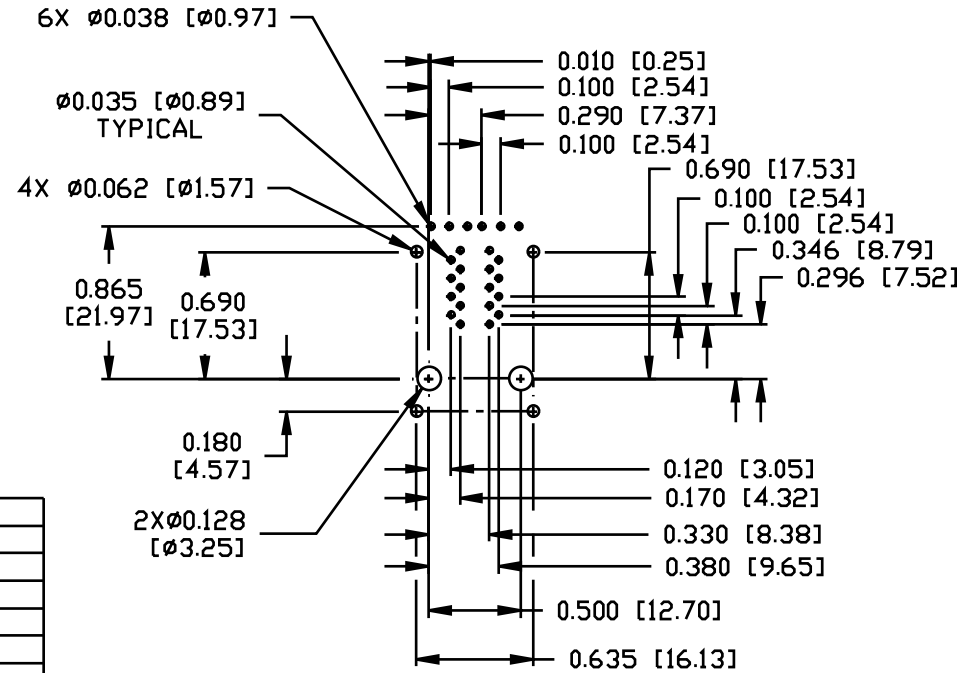
0843-2B1T-70 10/100Base-TX MagJack® 2 x 1 wih LEDs

LED CONFIGURATION



1	TD+
2	TD-
3	RD+
4	RD-
5	N/C
6	N/C
7	N/C
8	TCT
9	RCT
10	ORANGE LED CATHODE
11	COMMON ANODE
12	GREEN LED CATHODE

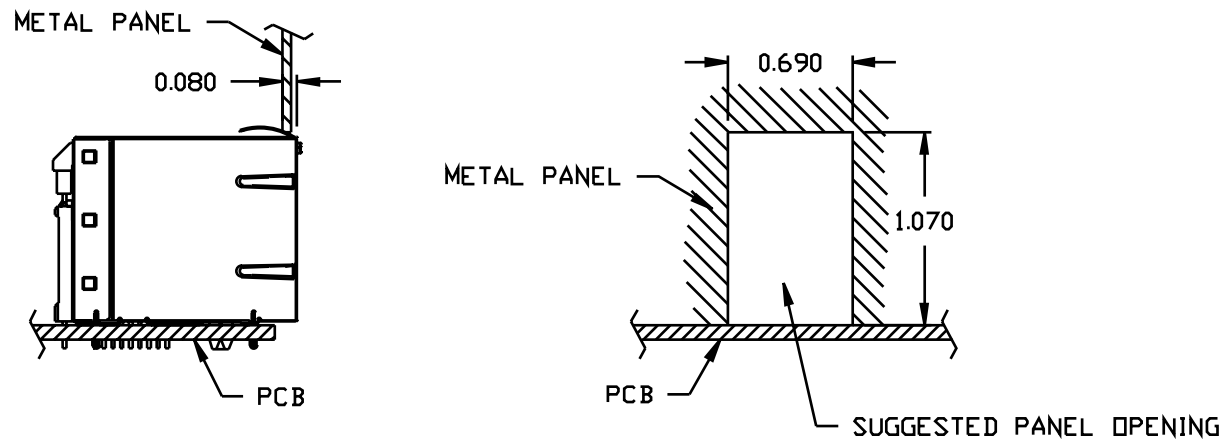
PIN-OUT INFORMATION (COMPONENT SIDE VIEW)



SUGGESTED FOOTPRINT (COMPONENT SIDE VIEW)

INTEGRATED CONNECTOR MODULES
0843-2B1T-70 10/100Base-TX MagJack® 2 x 1 with LEDs

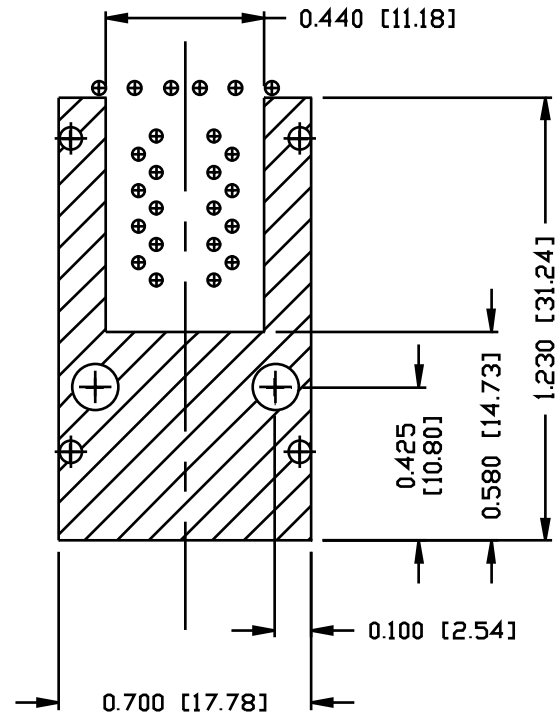
SUGGESTED PANEL OPENING



NOTE:

THE DISTANCE OF PANEL INSIDE SURFACE RELATIVE TO FRONT SURFACE OF PART IS ONLY A SUGGESTION. IN CASE THIS DISTANCE IS DIFFERENT, THE REQUIRED PANEL OPENING DIMENSIONS CHANGE ACCORDINGLY.

INTEGRATED CONNECTOR MODULES
0843-2B1T-70 10/100Base-TX MagJack® 2 x 1 wih LEDs



NOTES:

THE SHADED AREA OF BOTTOM SIDE OF PART
MAY BE COVERED BY METAL SHIELD.