

Technical Data:

Material:

- HOUSING: NYLON (Without Glass). UL 94 V-0.
- Metal Housing: Brass, Tin plated.
First 40u" (min) Cu plating over all.
40u" (min) Cu plating over all.
Last 100u" (min) Cu plating over all.
(P.C Pin): $\varnothing 0.9\text{mm}/.035\text{ in} \cong 0.65\text{mm}^2$
- Wire guard: Stainless spring steel.
- Screw: M2, Steel Zinc plated, yellow chromate treated.

Electrical:

- Current rating: 7 Amp.
- Contact resistance: 15m Ω (Max).
- Insulation resistance: 5000M Ω /500VAC.
- Withstanding Voltage: 1500VAC/min. test time= 60sec/1pc.
- Wire Range: 16-26 AWG.

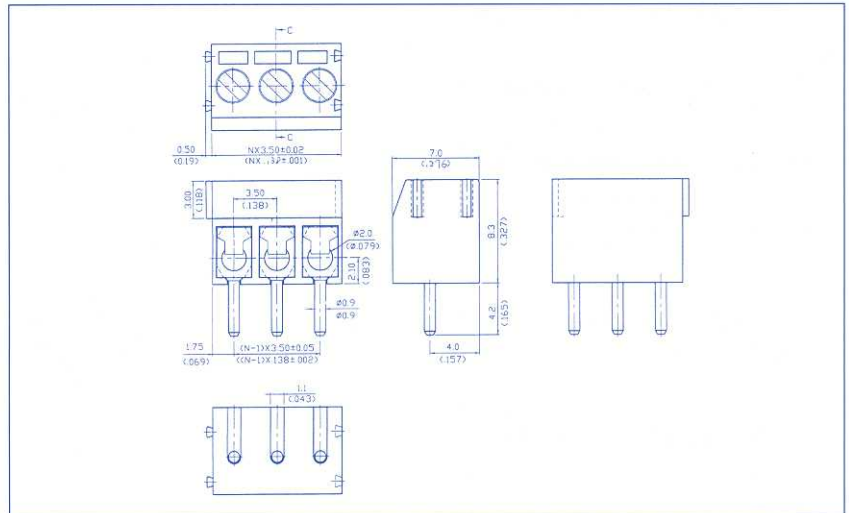
Mechanical:

- Drawing force: 6.0 Kgs (min).
- Torque: 3.5 Kg/cm² (Max).
- Operating temperature: -55°C to +105°C
- Solderability: 95 % coverage (min). test temperature= 230°C \pm 10°C.
test time= 3°C \pm 0.5sec.

Application and

Features:

- Center-to-Center Spacing:
3.5mm/.138in.
- Recommended P.C.B Hole
 \varnothing :1.20mm/0.047in.
- Standard sizes are 2 and 3 way-block, but every number of contact can be combined, by simply plugging them together and can be ordered as required.



Notes: Please replace 'X' with appropriate coding listed in the tables below

3 0 2 - X X X - X X 0 2 - 0 0 X 0

Number of contact

02-24 po	02
	03
	etc.

Pitch

3.50mm/.138"	0
7.00mm/.276"	1
3.81mm/.150"	A
7.62mm/.300"	B

Wire Guard

With	1
------	---

Color

Black	0
Green	5
Blue	6

Screw Type

" - "	0
" + "	1