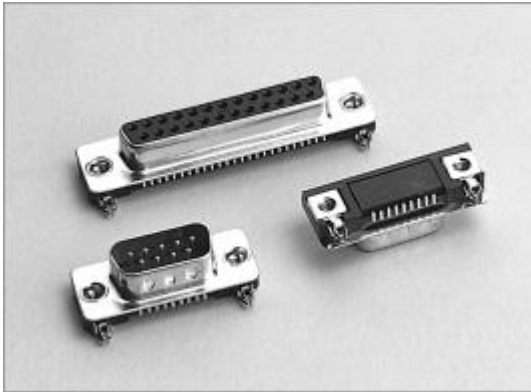


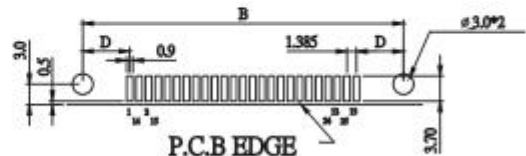
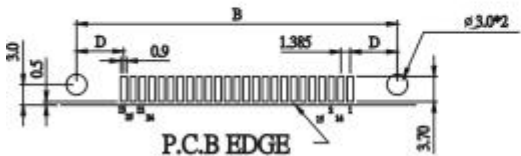
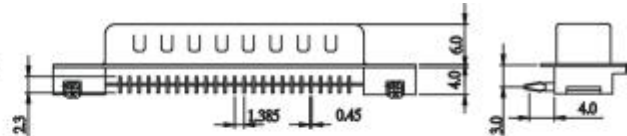
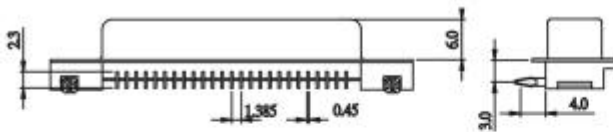
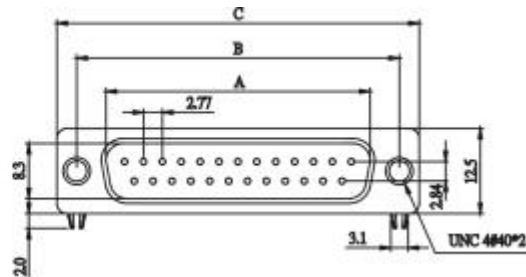
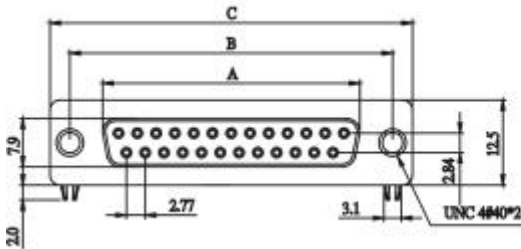
E27

D-SUB PCB RIGHT ANGLE (SMT) FOR NOTEBOOK



| POSITION | A | B | C | D |
|----------|-------|-------|-------|------|
| 9F | 16.30 | 25.00 | 30.80 | 6.95 |
| 15F | 24.60 | 33.30 | 39.20 | 6.95 |
| 25F | 38.30 | 47.10 | 53.10 | 6.93 |
| 37F | 54.80 | 63.50 | 69.40 | 6.82 |

| POSITION | A | B | C | D |
|----------|-------|-------|-------|------|
| 9M | 16.92 | 25.00 | 30.80 | 6.95 |
| 15M | 25.25 | 33.30 | 39.20 | 6.95 |
| 25M | 38.96 | 47.10 | 53.10 | 6.93 |
| 37M | 55.42 | 63.50 | 69.40 | 6.82 |



P.C.B. EDGE LAYOUT PATTERN FEMALE

P.C.B. EDGE LAYOUT PATTERN MALE

HOW TO ORDER:

E27 - 1 - 2 - 3 - 4 - 5 - 6 - 7

| 1.NO. OF CONTACT | 2.CONTACT TYPE | 3.CONTACT PLATING | 4.SHELL PLATING |
|-----------------------------------|--|---|---|
| 09 25 | M: MALE F: FEMALE | T: TIN PLATED S: SELECTIVE G: GOLD FLASH A: 5u" INCH GOLD B: 10u" INCH GOLD C: 15u" INCH GOLD D: 30u" INCH GOLD | T: TIN N: NICKEL P: TIN + DIMPLE Q: NICKEL + DIMPLE Z: ZINC (CHROMATIC) |
| 5.MOUNTING METHOD | 6.ACCESSORIES | 7.INSULATOR COLOR | |
| B: 4-40 THREAD RIVET W/ BOARDLOCK | A: NON ACCESSORIES B: ADD SCREW (4.8 * 11.8) C: FIX SCREW (4.8 * 11.8) D: ADD SCREW (5.8 * 12.0) E: FIX SCREW (5.8 * 12.0) | 1. BLACK | |