

Coaxial Low Pass Filter

DC to 1300 MHz (40 dB Isolation up to 20 GHz)

NEW!
VLFX-1300

Maximum Ratings

Operating Temperature -55°C to 100°C

Storage Temperature -55°C to 100°C

RF Power Input* 10W max. at 25°C

*Passband rating, derate linearly to 3.5W at 100°C ambient.

Features

- very good isolation, 40 dB up to 20 GHz
- 21 sections
- temperature stable LTCC internal structure
- patent pending
- re-entry frequency > 20 GHz
- rugged stainless steel unibody

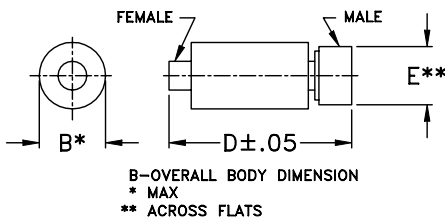


CASE STYLE: FF1118
PRICE: \$ 39.95 ea. QTY (1-9)

Applications

- harmonic rejection
- transmitters/receivers
- lab use
- test instrumentation

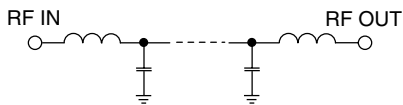
Outline Drawing



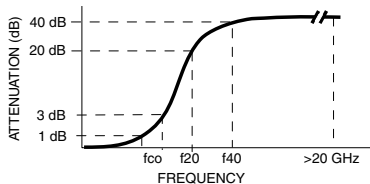
Outline Dimensions (inch/mm)

B	D	E	wt.
.39	2.67	.312	grams
9.91	67.82	7.92	17.0

Functional Schematic



Typical Frequency Response



Low Pass Filter Electrical Specifications @ 25°C

MODEL NO.	PASSBAND (MHz) (Loss < 1.2dB) Max.	fco, MHz Nom (Loss 3 dB) Typ	STOPBAND (MHz) (Loss, dB)		VSWR (:1)		NO. OF SECTIONS
			f20 Min.	f40 Typ.	Stopband Typ.	Passband Typ.	
VLFX-1300	DC-1300	1925	2300	2500-20000	10	1.2	21

Typical Performance Data @ 25°C

Frequency (MHz)	Insertion Loss (dB)	VSWR (:1)
50	0.21	1.05
300	0.34	1.09
600	0.46	1.11
1300	0.95	1.18
1600	1.27	1.10
1750	1.58	1.20
1850	2.14	1.56
1950	3.46	2.40
2100	9.35	6.43
2250	25.11	13.82
2350	44.19	15.72
3000	68.08	23.79
4000	81.32	47.72
5000	72.73	76.04
7500	53.99	20.63
10000	72.31	69.62
12500	65.95	6.98
15000	64.17	2.10
17500	75.05	31.26
20000	70.82	5.83

