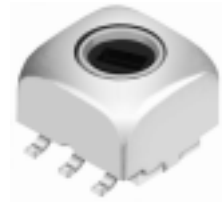
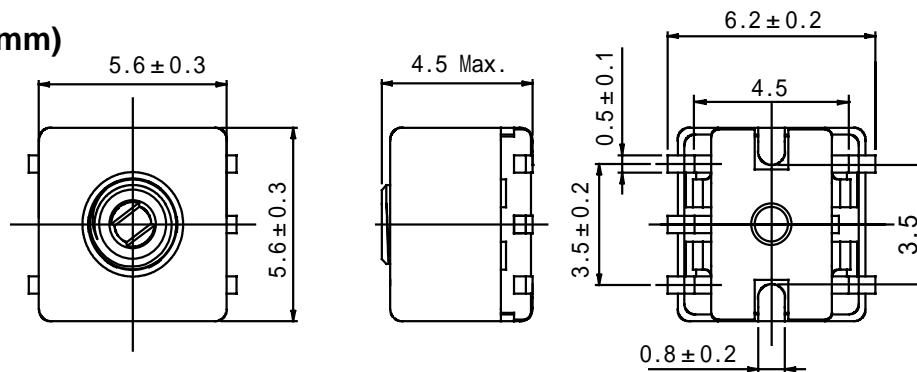


**Type: CS54**
**Product Description**

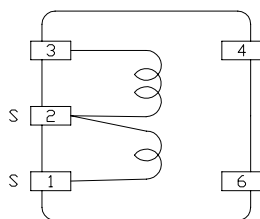
- 5.9 × 5.9mm Max.(L × W), 4.5mm Max. Height.
- Inductance: 5 μ H Max.
- Operating frequency: 150MHz Max.
- In addition to the reference versions of parameters shown here, custom designs are available to meet your exact requirements.


**Feature**

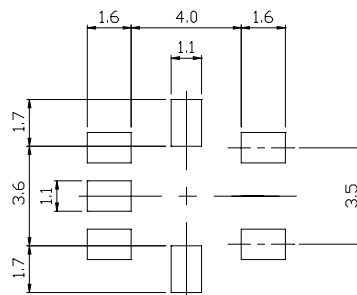
- Variable shielded type.
- Preset products are available.
- RoHS Compliance.

**Dimensions (mm)**


- \* Dimension does not include solder used on coil.
- \* Pin pitch should be measured at the root of terminal.
- \* Dimensions without tolerance are approx.

**Connection (Bottom View)**


“ S ” is winding start.

**Land Patterns (mm)**

**Specification (Part No. 24-Ø288ØZØ1-A)**

Item	( 1 - 3 )	Measuring Condition
Tuning Capacity	2 1.0 p F ± 1 % Variable	1 0 0 M H z
Unloaded Q	7 5 ± 2 5 % Within	1 0 0 M H z
Preset	2 1.0 p F ± 2 % Within	1 0 0 M H z