

CCP-050 Model
14 Pin Dip, **5V, PECL**



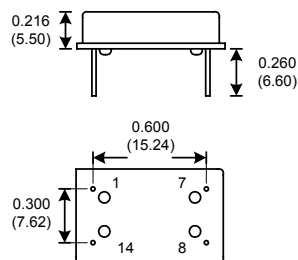
PECL Clock Oscillator



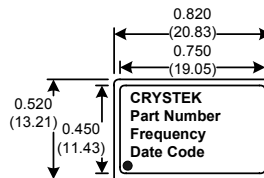
Designed to meet today's requirements for economical PECL applications.

****Custom Designs Available**

- Frequency Range:** 30MHz to 160MHz
- Frequency Stability:** ± 10ppm to ± 100ppm
- Temperature Range:** See Table 1
- Storage:** -55°C to 120°C
- Input Voltage:** 5V ± 0.5V
- Input Current:** 50 mA Max
- Output:** PECL
 - Symmetry: 40/60% Max @ 50% Vdd
(Option Y) 45/55% Max
 - Rise/Fall Time: 1ns Typ, 2ns Max (20% - 80%)
 - Output Voltage: Voh = 3.90V Min, 4.05V Max
Vol = 3.15V Min, 3.25V Max
 - Load: 50 Ohms to Vcc-2V
 - Configuration:
 - (Option C) Complementary Output
 - (Option S) Single Output
- Aging:** <3ppm 1st/yr



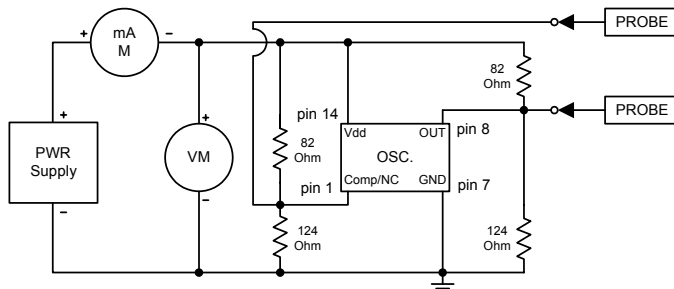
CCP-050



PIN	Function
1	Comp or NC
7	GND
8	OUT
14	Vcc

Dimensions inches (mm)

All dimensions are Max unless otherwise specified.



Operating Temperature	Freq. Stability (± ppm)				
	A	B	C	D	E
A 0°C to 50°C	10	20	25	50	100
B 0°C to 70°C	10	20	25	50	100
C -10°C to 60°C		20	25	50	100
D -10°C to 70°C		20	25	50	100
E -20°C to 70°C			25	50	100
F -30°C to 75°C			25	50	100
G -40°C to 85°C			25	50	100

Table 1

Crystek Part Number Guide

CCP-050 C A Y - 25 - 155.520

- #1 Crystek 14 Pin Dip PECL Oscillator
- #2 Output Option: (C = Comp) (S = Single)
- #3 Operating Temp.: (see table 1)
- #4 Symmetry: (Blank = 40/60, Y=45/55)
- #5 Stability FPM: (see table 1, Blank = 100ppm)
- #6 Frequency in MHz: 3 or 6 decimal places

Example:
CCP-050CAY-25-155.520 = 5.0V, Comp., 0/50°C, 45/55, 25ppm, 155.520MHz
CCP-050SA-156.250 = 5.0V, Single, 0/50°C, 40/60, 156.250MHz

Specifications subject to change without notice.

TD-021018 Rev. E



Crystek Crystals Corporation

12730 Commonwealth Drive • Fort Myers, FL 33913
239.561.3311 • 800.237.3061 • FAX: 239.561.1025 • www.crystek.com