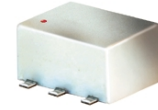


Surface Mount

Power Splitter/Combiner

ADP-2-10+ ADP-2-10

2 Way-0° 50Ω 5 to 1000 MHz



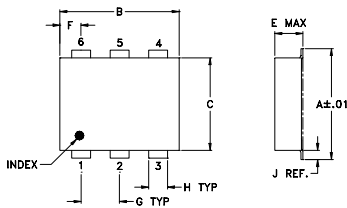
Maximum Ratings

Operating Temperature	-40°C to 85°C
Storage Temperature	-55°C to 100°C
Power Input (as a splitter)	0.5W max.
Internal Dissipation	0.125W max.

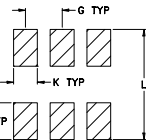
Pin Connections

SUM PORT	1
PORT 1	3
PORT 2	4
GROUND	6
NOT USED	2,5

Outline Drawing



PCB Land Pattern

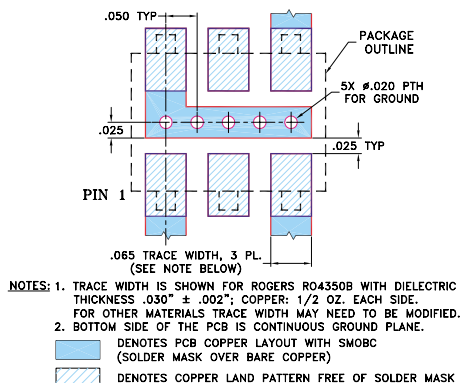


Suggested Layout,
Tolerance to be within ±.002

Outline Dimensions (inch/mm)

A	B	C	D	E	F	G
.272	.310	.220	.100	.162	.055	.100
6.91	7.87	5.59	2.54	4.11	1.40	2.54
H	J	K	L			wt
.030	.026	.065	.300			grams
0.76	0.66	1.65	7.62			0.25

Demo Board MCL P/N: TB-48+ Suggested PCB Layout (PL-035)



Features

- low insertion loss, 0.4 dB typ.
- excellent amplitude unbalance, 0.01 dB typ.
- very good phase unbalance, 0.3 deg. typ.
- aqueous washable
- protected under U.S. Patent 6,133,525

Applications

- VHF/UHF receivers/transmitters
- instrumentation

CASE STYLE: CD636
PRICE: \$12.95 ea. QTY. (10-49)

+ RoHS compliant in accordance with EU Directive (2002/95/EC)

The +Suffix identifies RoHS Compliance. See our web site for RoHS Compliance methodologies and qualifications.

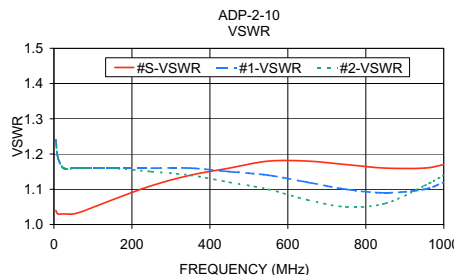
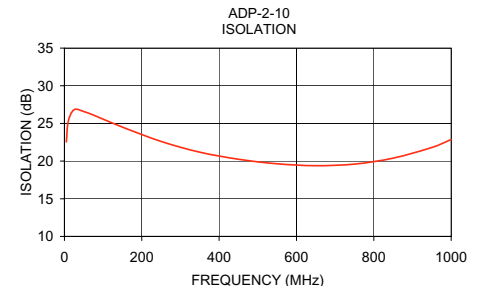
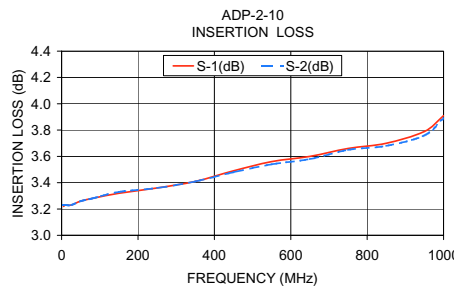
Electrical Specifications

FREQ. RANGE (MHz)	ISOLATION (dB)						INSERTION LOSS (dB) ABOVE 3.0 dB						PHASE UNBALANCE (Degrees)			AMPLITUDE UNBALANCE (dB)		
	L		M		U		L		M		U		L	M	U	L	M	U
$f_c - f_u$	Typ.	Min	Typ.	Min	Typ.	Min	Typ.	Max.	Typ.	Max.	Typ.	Max.	Max.	Max.	Max.	Max.	Max.	Max.
5-1000	25	15	23	15	20	15	0.3	0.9	0.4	0.9	0.6	1.2	2.0	2.0	3.0	0.2	0.2	0.3

L = 5-50 MHz M = 50-500 MHz U = 500-1000 MHz

Typical Performance Data

Frequency (MHz)	Insertion Loss (dB)		Amplitude Unbalance (dB)	Isolation (dB)	Phase Unbalance (deg.)	VSWR S	VSWR 1	VSWR 2
	S-1	S-2						
5.00	3.22	3.23	0.01	22.55	0.06	1.04	1.24	1.24
10.00	3.23	3.23	0.00	25.33	0.03	1.03	1.19	1.19
25.00	3.23	3.23	0.00	26.82	0.02	1.03	1.16	1.16
50.00	3.26	3.26	0.00	26.58	0.06	1.03	1.16	1.16
80.00	3.28	3.28	0.00	26.00	0.14	1.04	1.16	1.16
150.00	3.32	3.33	0.01	24.51	0.21	1.07	1.16	1.16
250.00	3.36	3.36	0.01	22.61	0.39	1.11	1.16	1.15
350.00	3.41	3.41	0.00	21.19	0.57	1.14	1.16	1.14
450.00	3.49	3.48	0.00	20.24	0.66	1.16	1.15	1.12
550.00	3.56	3.54	0.02	19.64	0.76	1.18	1.14	1.10
650.00	3.60	3.58	0.02	19.39	0.75	1.18	1.12	1.07
750.00	3.66	3.65	0.01	19.60	0.73	1.17	1.10	1.05
850.00	3.70	3.68	0.02	20.39	0.92	1.16	1.09	1.06
950.00	3.79	3.76	0.03	21.81	0.69	1.16	1.10	1.11
1000.00	3.91	3.89	0.02	22.86	0.89	1.17	1.12	1.14



electrical schematic



Mini-Circuits®
ISO 9001 ISO 14001 CERTIFIED

ALL NEW
minicircuits.com

P.O. Box 350166, Brooklyn, New York 11235-0003 (718) 934-4500 Fax (718) 332-4661 For detailed performance specs & shopping online see Mini-Circuits web site



The Design Engineers Search Engine Provides ACTUAL Data Instantly From MINI-CIRCUITS At: www.minicircuits.com

RF/IF MICROWAVE COMPONENTS

REV. D
M102713
ED-7799/2
ADP-2-10
HY/TD/CP
070522