

Precision

Digital Step Attenuator

ZFAT-4816

50Ω TTL Control, Pin Diode 10 to 1000 MHz



CASE STYLE: SSS173

Maximum Ratings

Operating Temperature	-55°C to 100°C
Storage Temperature	-55°C to 125°C
Input Power	15 dBm
DC Voltage	5.5 V
TTL	5.5V

Features

- wideband, 10 to 1000 MHz
- excellent step accuracy, 0.2 dB typ.
- small, shielded metal case

Applications

- base stations
- cellular
- test sets

Connectors	Model	Price	Qty.
SMA	ZFAT-4816	\$89.95	(1-9)
BRACKET (OPTION "B")		\$2.50	(1+)

Digital Step Attenuator Electrical Specifications

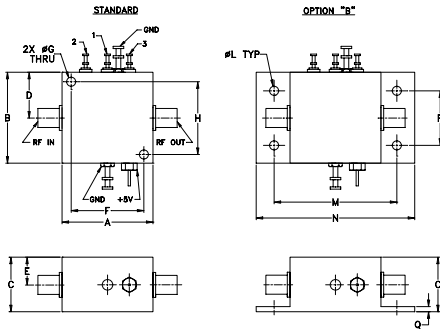
MODEL NO.	FREQUENCY (MHz)		PRIMARY ATTENUATION STEPS (dB)			ATTENUATION (dB)		VSWR (:1)		
	f_L	f_U	#1	#2	#3	(1,1,1)** Nom.	(0,0,0) Max.	L	M	U
ZFAT-4816	10	1000	4±0.4	8±0.4	16±0.5	28.0	4.0	1.6	1.4	1.5

L=10 to 100 MHz M=100 to 500 MHz U=500 to 1000 MHz

** Total attenuation above thru-loss.

1. Step accuracy is specified for basic steps. For combination of steps accuracy is additive.
2. Thru-loss is minimum insertion loss with all attenuation elements bypassed (All TTL controls state are Low)

Outline Drawing



Outline Dimensions (inch/mm)

A	B	C	D	E	F	G	H
1.25	1.25	0.75	.63	.38	1.000	.125	1.000
31.75	31.75	19.05	16.00	9.65	25.40	3.18	25.40
J	K	L	M	N	P	Q	wt
--	--	.125	1.688	2.18	.75	.07	grams
--	--	3.18	42.88	55.37	19.05	1.78	75

Additional Specifications

DC Voltage	+5V
DC Current	12mA max.
Switching Time (50% TTL to within specified accuracy of the next-selected attenuation step, and to within 0.1 dB of steady-state Thru-Loss)	10μs typ., 15μs max.,
TTL Input High Threshold	2V min
TTL Input Low Threshold	0.8V max.
TTL Toggle Rate	50 kHz typ.
1dB Compression	0 dBm (10-100 MHz) +10 dBm (100-1000MHz)

Mini-Circuits®
ISO 9001 ISO 14001 CERTIFIED

ALL NEW
minicircuits.com

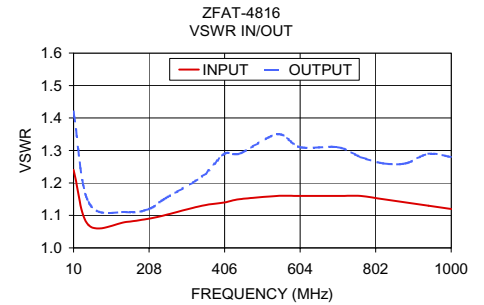
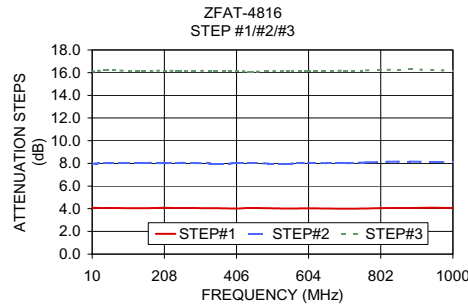
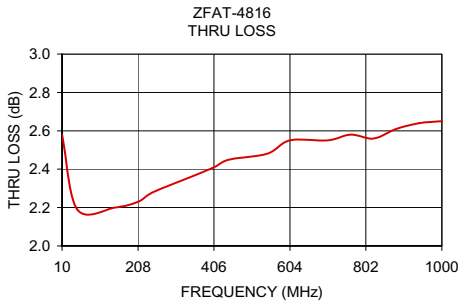
P.O. Box 350166, Brooklyn, New York 11235-0003 (718) 934-4500 Fax (718) 332-4661 For detailed performance specs & shopping online see Mini-Circuits web site



The Design Engineers Search Engine Provides ACTUAL Data Instantly From MINI-CIRCUITS At: www.minicircuits.com

RF/IF MICROWAVE COMPONENTS

REV. OR
M97802
ZFAT-4816
DJ/VV/CP
070606



Step Attenuation* at TTL Control State

FREQ. (MHz)	000 (dB)	001 (dB)	010 (dB)	011 (dB)	100 (dB)	101 (dB)	110 (dB)	111 (dB)
10.00	2.58	4	8	12	16	20	24	28
49.60	2.19	4.07	8.01	12.07	16.20	20.22	24.12	28.16
148.60	2.20	4.05	8.05	12.12	16.14	20.12	24.07	28.26
208.00	2.23	4.08	8.02	12.13	16.19	20.34	24.10	28.37
247.60	2.28	4.06	8.05	12.08	16.14	20.20	24.19	28.31
346.60	2.36	4.05	7.99	12.06	16.17	20.14	23.99	28.29
406.00	2.41	4.02	8.00	12.08	16.14	20.21	23.98	27.93
445.60	2.45	4.07	8.00	11.99	16.09	20.16	24.21	28.32
544.60	2.48	4.02	7.99	11.97	16.16	20.26	24.46	28.32
604.00	2.55	4.03	8.03	12.01	16.13	20.17	24.10	28.34
703.00	2.55	4.01	8.02	12.00	16.17	20.15	24.22	27.91
762.40	2.58	4.02	8.08	12.12	16.20	20.30	24.12	28.39
821.80	2.56	4.06	8.14	12.09	16.24	20.26	24.15	27.99
881.20	2.61	4.07	8.15	12.11	16.28	20.25	24.17	28.06
940.60	2.64	4.09	8.13	12.16	16.24	20.36	24.33	28.22
1000.00	2.65	4.06	8.12	12.13	16.16	20.34	24.16	28.02

INPUT VSWR

FREQ. (MHz)	001	010	011	100	101	110	111
10.00	1.24	1.27	1.17	1.38	1.21	1.25	1.17
49.60	1.07	1.08	1.05	1.12	1.06	1.08	1.05
148.60	1.08	1.09	1.05	1.13	1.06	1.08	1.05
208.00	1.09	1.10	1.06	1.15	1.08	1.10	1.06
247.60	1.10	1.11	1.07	1.16	1.08	1.11	1.07
346.60	1.13	1.15	1.09	1.21	1.11	1.14	1.09
406.00	1.14	1.17	1.11	1.24	1.13	1.16	1.10
445.60	1.15	1.18	1.11	1.26	1.14	1.17	1.11
544.60	1.16	1.21	1.13	1.30	1.16	1.20	1.14
604.00	1.16	1.22	1.15	1.32	1.16	1.22	1.15
703.00	1.16	1.24	1.16	1.34	1.18	1.24	1.17
762.40	1.16	1.25	1.17	1.36	1.19	1.26	1.18
821.80	1.15	1.25	1.18	1.36	1.19	1.26	1.19
881.20	1.14	1.26	1.19	1.37	1.19	1.28	1.20
940.60	1.13	1.26	1.20	1.37	1.19	1.28	1.21
1000.00	1.12	1.26	1.21	1.37	1.19	1.30	1.23

OUTPUT VSWR

FREQ. (MHz)	001	010	011	100	101	110	111
10.00	1.42	1.29	1.29	1.11	1.11	1.10	1.11
49.60	1.14	1.09	1.10	1.05	1.05	1.05	1.06
148.60	1.11	1.07	1.06	1.05	1.04	1.04	1.04
208.00	1.12	1.06	1.05	1.02	1.02	1.02	1.01
247.60	1.15	1.08	1.07	1.05	1.04	1.04	1.04
346.60	1.22	1.20	1.12	1.09	1.07	1.07	1.08
406.00	1.29	1.19	1.18	1.12	1.13	1.11	1.12
445.60	1.29	1.19	1.18	1.13	1.13	1.13	1.12
544.60	1.35	1.26	1.26	1.19	1.20	1.19	1.20
604.00	1.31	1.24	1.23	1.19	1.19	1.18	1.20
703.00	1.31	1.25	1.26	1.21	1.23	1.23	1.21
762.40	1.28	1.25	1.26	1.23	1.23	1.23	1.24
821.80	1.26	1.22	1.23	1.20	1.19	1.20	1.19
881.20	1.26	1.22	1.23	1.20	1.21	1.21	1.21
940.60	1.29	1.23	1.25	1.19	1.19	1.21	1.22
1000.00	1.28	1.28	1.30	1.26	1.25	1.27	1.26

* Step attenuation above thru-loss (TTL logic 000)



P.O. Box 350166, Brooklyn, New York 11235-0003 (718) 934-4500 Fax (718) 332-4661 For detailed performance specs & shopping online see Mini-Circuits web site



The Design Engineers Search Engine Provides ACTUAL Data Instantly From MINI-CIRCUITS At: www.minicircuits.com

RF/IF MICROWAVE COMPONENTS