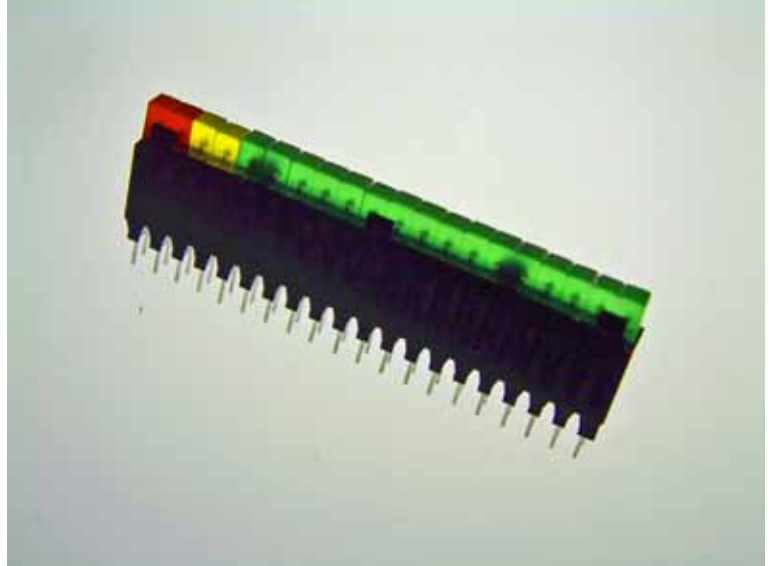


# BG2000B SERIES

## 20 Element Bargraph

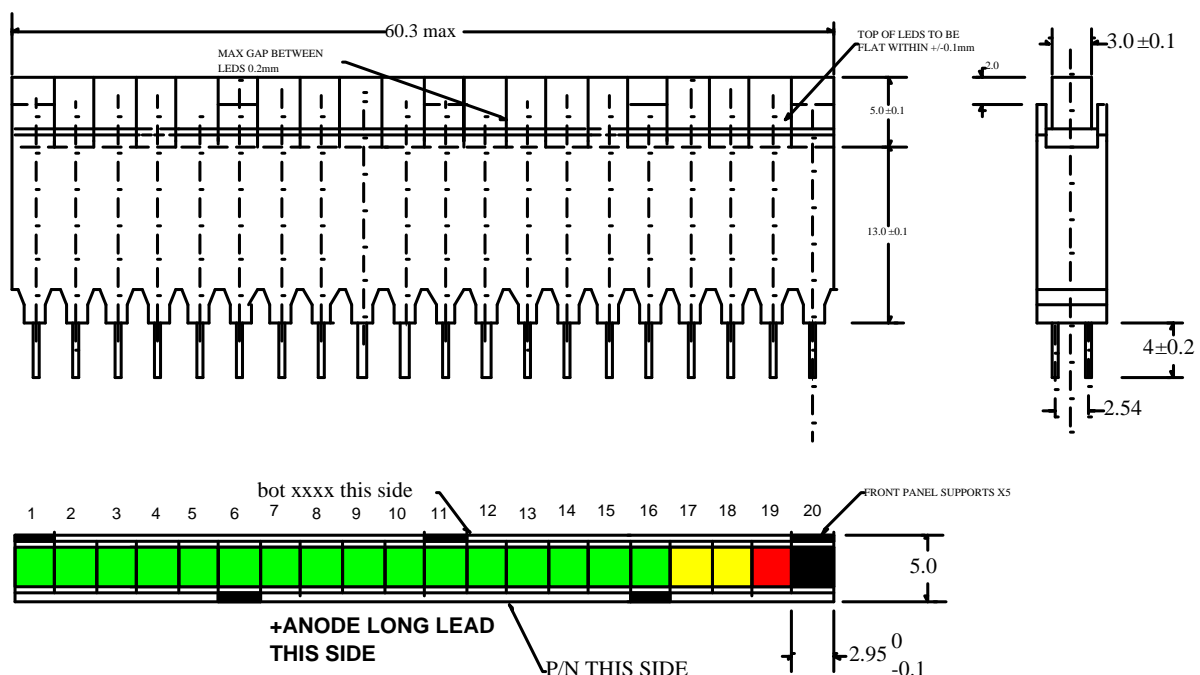
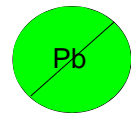
BG2000B is a family of Bar graphs of various colours up to 20 elements. Light Emitting Diodes 3x3mm are mounted in a black Polycarbonate housing which conforms to flammability specification UL-94VO. The LEDs are aligned with a flat top for direct presentation to the viewer, castellations support a 2mm front panel.

- Any colour combination of Red, Yellow or Green LEDs.
- Any number of elements up to 20.
- Matching LEDs..



### MECHANICAL DATA

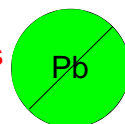
These components are RoHS compliant



**BEDFORD OPTO TECHNOLOGY LTD**  
**1,BIGGAR BUSINESS PARK, BIGGAR,LANARKSHIRE, ML12 6FX**  
Tel: +44 (0) 1899 221221 Fax: +44 (0) 1899 221009  
Website: bot.co.uk E-mail: bill@bot.co.uk

# BG2000B SERIES

These components are RoHS compliant



## ABSOLUTE MAXIMUM RATINGS (at 25 °)

COLOUR	GREEN	RED/YELLOW	UNITS
DC FORWARD CURRENT	25	30	mA
POWER DISSIPATION PER LED	105	105	mW
REVERSE VOLTAGE	5.0	5.0	Volts
STORAGE TEMP	-40 TO +85	-40 TO +85	°C
OPERATING TEMP	-40 TO +85	-40 TO +85	°C
LEAD SOLDERING TEMP 2m from body t < 5 sec	260	260	°C

## ELECTRO-OPTICAL DATA (25°C)

COLOUR	VIEWING ANGLE deg	PEAK WAVELENGTH nm	FORWARD VOLTAGE (If = 20mA) MAX V	LUMINOUS INTENSITY mcd If = 20mA	
				MIN	TYP
YELLOW	110	590	3	2	8
GREEN	110	565	3	2	8
RED	110	625	3	3.2	8

## ORDERING INFORMATION

For mixed colours & units less than 20 elements please describe as:- BG20XY XY = Number of elements

USE R,Y OR G TO INDICATE COLOUR SEQUENCE FROM LEFT ON DRG ON FRONT PAGE

For devices with all same colour please describe as BG2000BX where X=colour

**BEDFORD OPTO TECHNOLOGY LTD**  
**1,BIGGAR BUSINESS PARK, BIGGAR,LANARKSHIRE, ML12 6FX**  
**Tel: +44 (0) 1899 221221 Fax: +44 (0) 1899 221009**  
**Website: bot.co.uk E-mail: bill@bot.co.uk**