

FAST RECOVERY RECTIFIER

VOLTAGE RANGE: 1500 V
CURRENT: 3.0 A

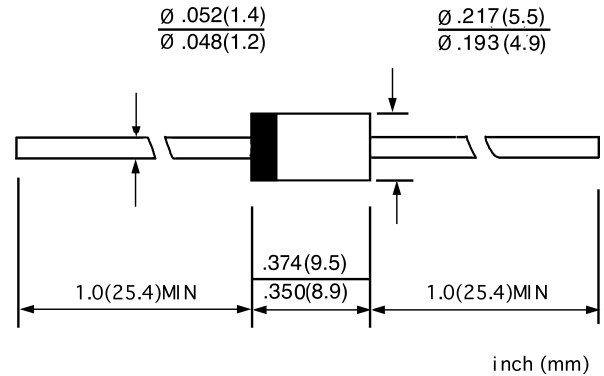
FEATURES

- ◇ Low cost
- ◇ Diffused junction
- ◇ Low leakage
- ◇ Low forward voltage drop
- ◇ High current capability
- ◇ Easily cleaned with Freon, Alcohol, Isopropanol and similar solvents
- ◇ The plastic material carries U/L recognition 94V-0

MECHANICAL DATA

- ◇ Case: JEDEC DO-27, molded plastic
- ◇ Terminals: Axial lead, solderable per MIL-STD-202, Method 208
- ◇ Polarity: Color band denotes cathode
- ◇ Weight: 0.041 ounces, 1.15 grams
- ◇ Mounting position: Any

DO - 27



MAXIMUM RATINGS AND ELECTRICAL CHARACTERISTICS

Ratings at 25°C ambient temperature unless otherwise specified.

Single phase, half wave, 60 Hz, resistive or inductive load. For capacitive load, derate by 20%.

| | | 3TH41 | UNITS |
|---|-----------------|---------------|--------------|
| Maximum recurrent peak reverse voltage | V_{RRM} | 1500 | V |
| Maximum RMS voltage | V_{RMS} | 1050 | V |
| Maximum DC blocking voltage | V_{DC} | 1500 | V |
| Maximum average forward rectified current 9.5mm lead length, @ $T_A=75^\circ C$ | $I_{F(AV)}$ | 3.0 | A |
| Peak forward surge current 8.3ms single half-sine-wave superimposed on rated load @ $T_J=125^\circ C$ | I_{FSM} | 200.0 | A |
| Maximum instantaneous forward voltage @ 3.5 A | V_F | 1.5 | V |
| Maximum reverse current @ $T_A=25^\circ C$ at rated DC blocking voltage @ $T_A=100^\circ C$ | I_R | 10.0 200.0 | μA |
| Maximum reverse recovery time (Note1) | t_{rr} | 800 | ns |
| Typical junction capacitance (Note2) | C_J | 32 | pF |
| Typical thermal resistance (Note3) | $R_{\theta JA}$ | 22 | $^\circ C/W$ |
| Operating junction temperature range | T_J | - 55---- +150 | $^\circ C$ |
| Storage temperature range | T_{STG} | - 55---- +150 | $^\circ C$ |

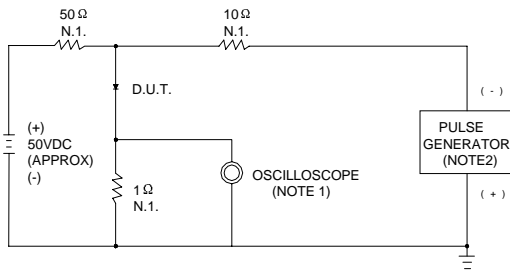
NOTE: 1. Measured with $I_F=0.5A$, $I_R=1A$, $I_{rr}=0.25A$.

2. Measured at 1.0MHz and applied reverse voltage of 4.0V DC.

3. Thermal resistance from junction to ambient.

www.galaxycn.com

FIG.1 – REVERSE RECOVERY TIME CHARACTERISTIC AND TEST CIRCUIT DIAGRAM



NOTES: 1. RISE TIME = 7ns MAX. INPUT IMPEDANCE = 1MΩ, 22pF
 2. RISE TIME = 10ns MAX. SOURCE IMPEDANCE = 50Ω

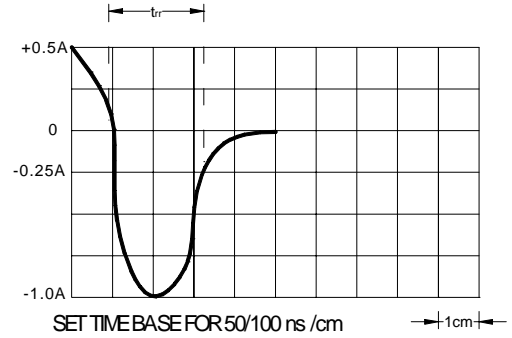


FIG.2 – FORWARD DERATING CURVE

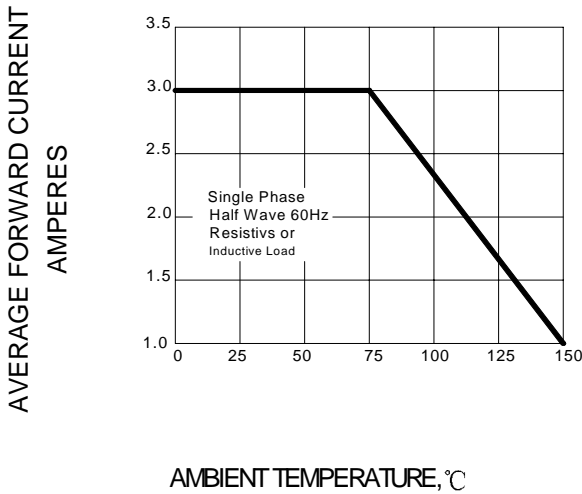


FIG.3 – PEAK FORWARD SURGE CURRENT

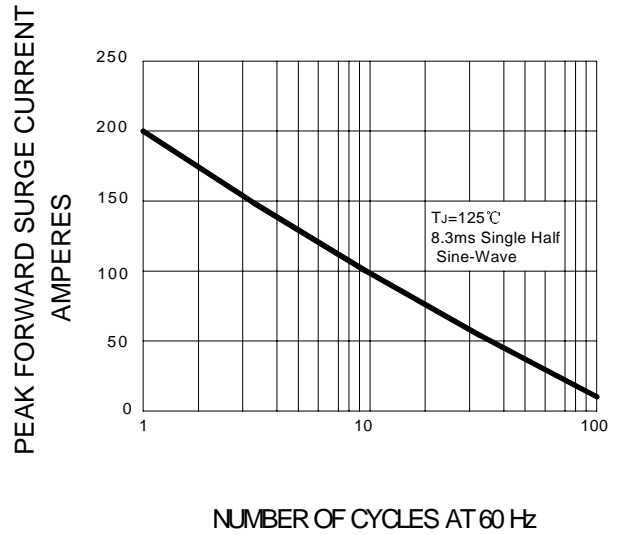


FIG.4 – TYPICAL FORWARD CHARACTERISTIC

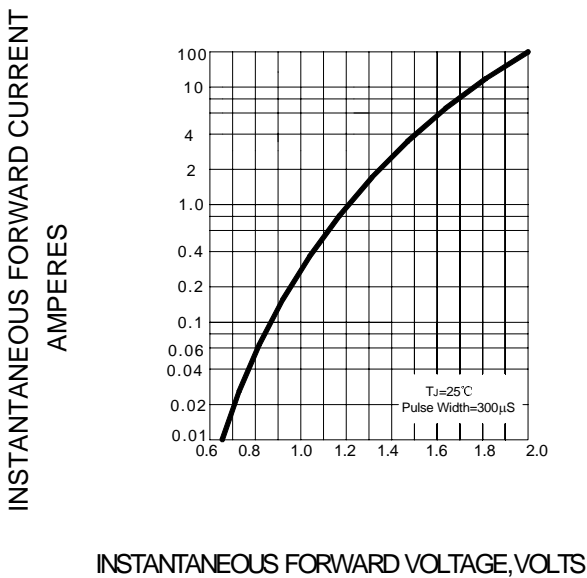


FIG.5 – TYPICAL JUNCTION CAPACITANCE

