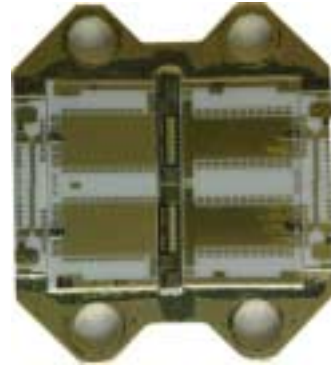


5.9 – 6.4 GHz 39 dBm Power Module

FEATURES

- P₁ dB: 39 dBm
- Small Signal Gain: 9 dB
- IP3: 47 dBm
- Bias Condition: 2400 mA @ 9 V



ELECTRICAL SPECIFICATIONS (Ta = 25 °C)

SYMBOL	DESCRIPTION	MIN	TYP	MAX	UNITS
FREQ	Frequency Range	5.9		6.4	GHz
SSG	Small Signal Gain	8	9		dB
GOF	SSG Flatness		± 0.4	± 0.5	dB
P₁ dB	Output Power at 1 dB Gain Compression	38	39		dBm
IP3	Third Order Intercept Point	46	47		dBm
VSWR, IN	Input VSWR		1.5:1	1.8:1	-
VSWR, OUT	Output VSWR		1.5:1	1.8:1	-
VDC	Supply Voltage		9		Volt
Vg	Gate Voltage	-1.2	-0.8	-0.4	Volt
IDC	Current Supply		2400	2500	mA

CARRIER: S33 / Z33