

P-tec Corp. Tel:(800)688-0613
 2405 Commerce Circle Tel:(719) 589 3122
 Alamosa Co. 81101 Fax:(719) 589 3592
 www.p-tec.net sales@p-tec.net



PL00250 Series SMD LED 1206 Package

Features

- *Round Dome Lens 1206 Package
3.2 x 1.6 x 1.8mm
- *GaN Ultra Bright White Chip used
- *Narrow Viewing Angle
- *Low Current Requirements
- *Ultra High Light Output
- *Compatible with IR Solder-Process
- *Industry Standard Footprint
- *Other Colors available
- *1000 or 2000 pcs per Reel
- *RoHS Compliant

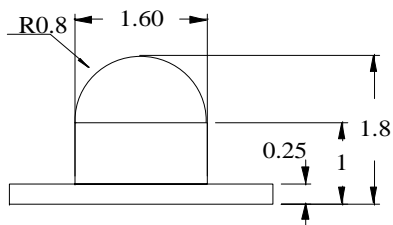
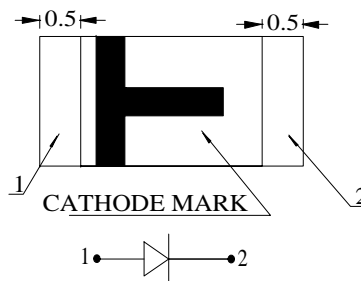
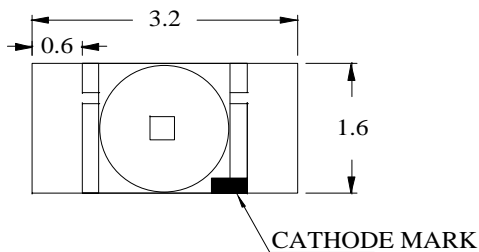
Absolute Maximum Ratings at $T_A = 25^\circ\text{C}$

Power Dissipation	120mW
Reverse Voltage (<math><100\mu\text{A}</math>)	5.0V
Max Forward Current	30mA
Peak Forward Current(1/10 Duty Cycle, 0.1ms Pulse Width)	100mA
Operating Temperature Range	-40°C to +85°C
Storage Temperature Range	-40°C to +85°C
Reflow Soldering Temperature.....	260°C for 10 seconds

Electrical & Optical Characteristics at $T_A = 25^\circ\text{C}$

Part Number	Emitting Color	Chip Material	Chromaticity Coordinates		Viewing Angle 201/2 Deg	Forward Voltage @20mA (V)		Luminous Intensity @20mA (mcd)	
			X	Y		Typ	Max	Min	Typ
PL00250-WCW03	White	GaN	0.31	0.31	40°	3.5	4.0	300.0	750.0

Package Dimensions are in **Millimeters**. Tolerance is $\pm 0.25\text{mm}$ unless otherwise specified.



Recommended Soldering Pad Layout

