

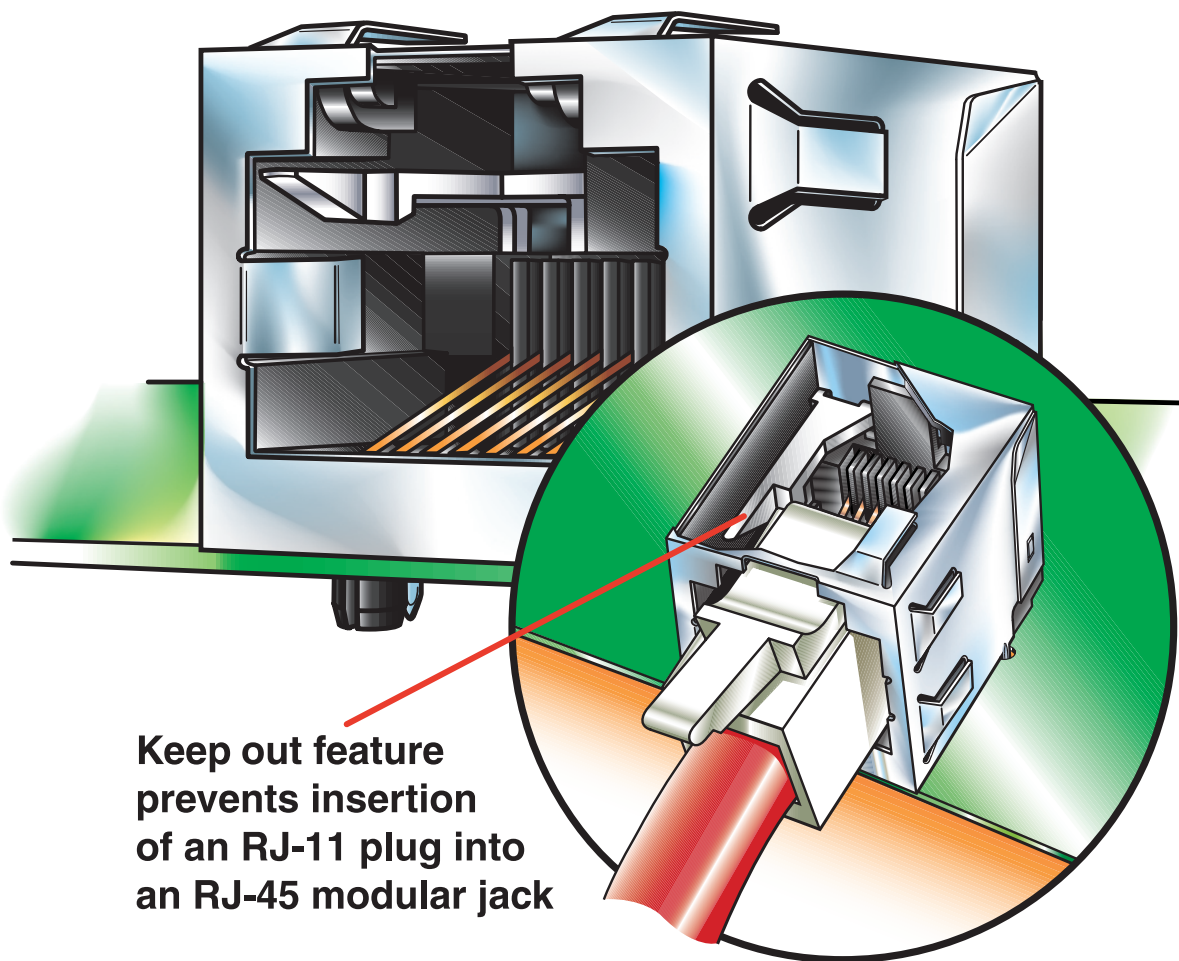
New RJ-45 Modular Jack with Keep Out Feature Eliminates Mis-mating to RJ-11 Plug

Eliminating the insertion and mis-mating of an RJ-11 (6 circuit) plug into an RJ-45 (8 circuit) modular jack is a concern for many telecommunication, networking, and computer manufacturers. For example, PC manufacturers have frequent calls from customers who do not realize they are inserting a typical RJ-11 phone line plug into an RJ-45 Ethernet modular jack port. This mis-mating not only causes the user frustration since the intended connection is not made, but the modular jack can be damaged by the insertion of the wrong size plug.

Molex has designed an RJ-45 modular jack with an RJ-11 plug keep out feature that prevents mis-mating. This unique design

incorporates an integrally molded lever inside the modular jack that blocks the insertion of an RJ-11 plug to fully mate with the modular jack. The lever does not interfere with an RJ-45 plug, however. When an RJ-45 plug is inserted into the RJ-45 modular jack, the keep out lever moves out of the way, allowing the plug to fully mate with the modular jack.

This design is incorporated into the Molex inverted modular jack that meets Category 5 for Fast Ethernet. The top latch feature on the modular jack provides easy access to the plug latch during unmating. The modular jack is offered in both unshielded and shielded configurations.



FEATURES AND SPECIFICATIONS

Features and Benefits

- Prevents mismatching of RJ-11 plugs into RJ-45 jack
- Meets Category 5 for Fast Ethernet
- Plug latch on top
- Shield with enhanced panel grounding tabs
- 100% tested for hi-pot and continuity
- Shortened leads with bottom contacts

Reference Information

Product Specification: PS-43860-0003
 Packaging: Unshielded—Tube
 Shielded—Tray
 UL File No.: E107635
 CSA File No.: LR19980
 Mates with: FCC 68 Plugs
 Designed in: Inches

Electrical

Voltage: 125V
 Current: 1.5A max.
 Contact Resistance: 10mΩ max.
 Dielectric Withstanding Voltage: 1000V AC
 Insulation Resistance: 500 MΩ min.

Mechanical

Durability: 500 cycles

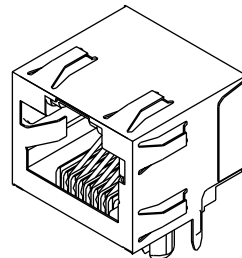
Physical

Housing: Black glass-filled, high-temperature nylon, UL 94V-0
 Plating: Contact Area—1.27μm (50μ") min. Gold
 Solder Tail Area—1.27μm (50μ") Tin/Lead
 Underplating—Nickel
 Operating Temperature: -40 to +80°C

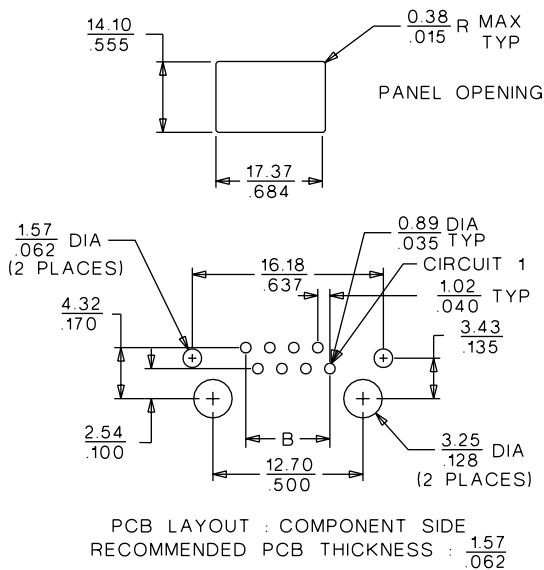
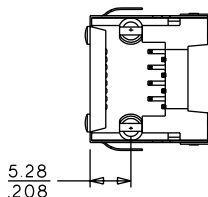
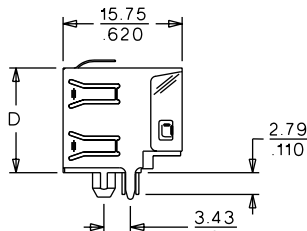
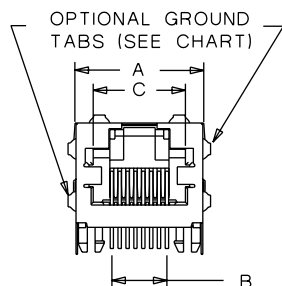
molex® Modular Jack

44620

Right Angle RJ-45 Low Profile Inverted Shielded And Unshielded Versions With RJ-11 Keepout Feature



CATALOG DRAWING (FOR REFERENCE ONLY)



ORDERING INFORMATION AND DIMENSIONS

Circuits	Loaded Contacts	Order Number			Dimension			
		Unshielded	Shielded		A	B	C	D
			With All Panel Grounding Tabs	With Offset Panel Grounding Tabs				
8	8	44620-0001			15.75 (.620)	7.11 (.280)	11.91 (.469)	13.21 (.520)
			44620-0002		16.38 (.645)	7.11 (.280)	11.91 (.469)	13.53 (.533)
				44620-0003	16.38 (.645)	7.11 (.280)	11.91 (.469)	13.53 (.533)

Note: Contact Molex for 30μ" select Gold plating or for alternative rear and center grounding tab option order numbers

Americas Headquarters

Lisle, Illinois 60532 U.S.A.
 Tel: 1-800-78MOLEX
 Fax: 630-969-1352

Far East North Headquarters

Yamato, Kanagawa, Japan
 Tel: 81-462-65-2324
 Fax: 81-462-65-2366

Far East South Headquarters

Jurong, Singapore
 Tel: 65-268-6868
 Fax: 65-265-6044

European Headquarters

Munich, Germany
 Tel: 49-89-413092-0
 Fax: 49-89-401527

Corporate Headquarters

2222 Wellington Ct.
 Lisle, IL 60532 U.S.A.
 Tel: 630-969-4550

Visit our Web site at <http://www.molex.com>