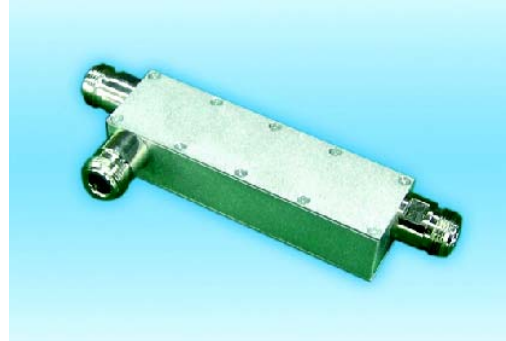
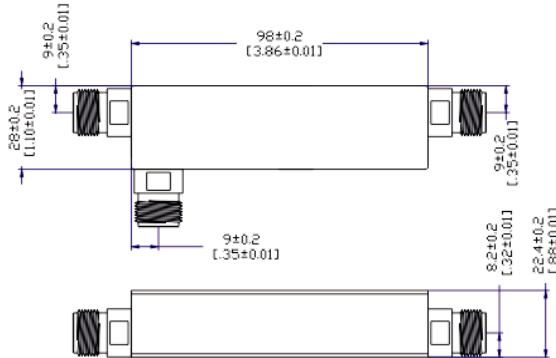


Air Dielectric Directional Coupler (15dB, 20dB)



► Features

- High Power Handling, Low Insertion Loss

► Applications

- GSM, CDMA, PCS, DCS, PHS, AMPS, SMR, WCDMA Communication systems

► Technical Specifications

P/N	JXMBOH-T-800-2500-15	JXMBOH-T-800-2500-20
Frequency Range	800-2500MHz	800-2500MHz
Insertion Loss	≤ 0.4 dB	≤ 0.2 dB
Coupling	$\leq 15 \pm 1.0$ dB	$\leq 20 \pm 1.0$ dB
Directivity	≥ 20 dB	≥ 20 dB
VSWR	$\leq 1.3:1$	$\leq 1.3:1$
Power Handling	100W	100W
Impedance	50Ω	50Ω
Port Connector	N-Female	N-Female
Operating Temperature	$-30^{\circ}\text{C} \sim +70^{\circ}\text{C}$	$-30^{\circ}\text{C} \sim +70^{\circ}\text{C}$

