

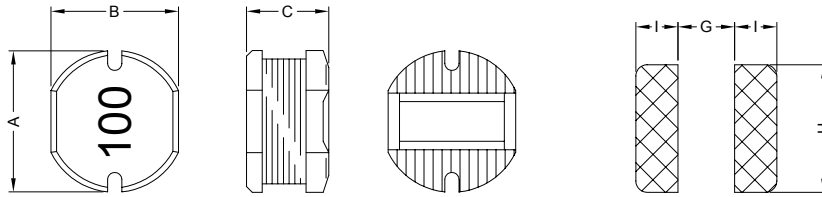
1. PART NO. EXPRESSION :

PDC1005100MZ F

(a) (b) (c) (d)(e)(f)

- (a) Series code
- (b) Dimension code
- (c) Inductance code : 100 = 10uH
- (d) Tolerance code : K = ±10%, M = ±20%
- (e) X, Y, Z : Standard part
- (f) F : Lead Free

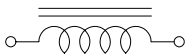
2. CONFIGURATION & DIMENSIONS :



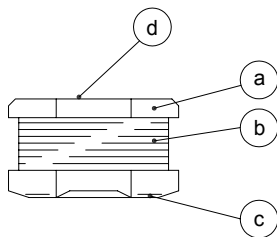
PCB Pattern

A	B	C	G	H	I
10.0±0.4	9.0±0.4	5.4±0.4	2.50 Ref.	9.50 Ref.	3.75 Ref.

3. SCHEMATIC :



4. MATERIALS :



- (a) Core : DRT Ferrite Core
- (b) Wire : Enamelled Copper Wire
- (c) Terminal : Ag+Cu+Ni+Sn
- (d) Ink : Bon Margue

5. GENERAL SPECIFICATION :

- a) Temp. rise : 40°C Max.
- b) Rated current : Base on temp. rise & $\Delta L/L0A = 10\%$ Max.
- c) Storage temp. : -40°C to +125°C
- d) Operating temp. : -40°C to +85°C
- e) Resistance to solder heat : 260°C.10 secs



RoHS Compliant

NOTE : Specifications subject to change without notice. Please check our website for latest information.

01.05.2008



SUPERWORLD ELECTRONICS (S) PTE LTD

6. ELECTRICAL CHARACTERISTICS :

Part No.	Inductance (μ H)	Test Frequency (Hz)	RDC (Ω) Max.	IDC (A) Max.
PDC1005100MZF	10 \pm 20%	2.52M	0.06	2.60
PDC1005120MZF	12 \pm 20%	2.52M	0.07	2.45
PDC1005150MZF	15 \pm 20%	2.52M	0.08	2.27
PDC1005180MZF	18 \pm 20%	2.52M	0.09	2.15
PDC1005220MZF	22 \pm 20%	2.52M	0.10	1.95
PDC1005270MZF	27 \pm 20%	2.52M	0.11	1.76
PDC1005330MZF	33 \pm 20%	2.52M	0.12	1.50
PDC1005390MZF	39 \pm 20%	2.52M	0.14	1.37
PDC1005470KZF	47 \pm 10%	2.52M	0.17	1.28
PDC1005560KZF	56 \pm 10%	2.52M	0.19	1.17
PDC1005680KZF	68 \pm 10%	2.52M	0.22	1.11
PDC1005820KZF	82 \pm 10%	2.52M	0.25	1.00
PDC1005101KZF	100 \pm 10%	1V / 1K	0.35	0.97
PDC1005121KZF	120 \pm 10%	1V / 1K	0.40	0.89
PDC1005151KZF	150 \pm 10%	1V / 1K	0.47	0.78
PDC1005181KZF	180 \pm 10%	1V / 1K	0.63	0.72
PDC1005221KZF	220 \pm 10%	1V / 1K	0.73	0.66
PDC1005271KZF	270 \pm 10%	1V / 1K	0.97	0.57
PDC1005331KZF	330 \pm 10%	1V / 1K	1.15	0.52
PDC1005391KZF	390 \pm 10%	1V / 1K	1.30	0.48
PDC1005471KZF	470 \pm 10%	1V / 1K	1.48	0.42
PDC1005561KZF	560 \pm 10%	1V / 1K	1.90	0.33
PDC1005681KZF	680 \pm 10%	1V / 1K	2.25	0.28
PDC1005821KZF	820 \pm 10%	1V / 1K	2.55	0.24



RoHS Compliant

NOTE : Specifications subject to change without notice. Please check our website for latest information.

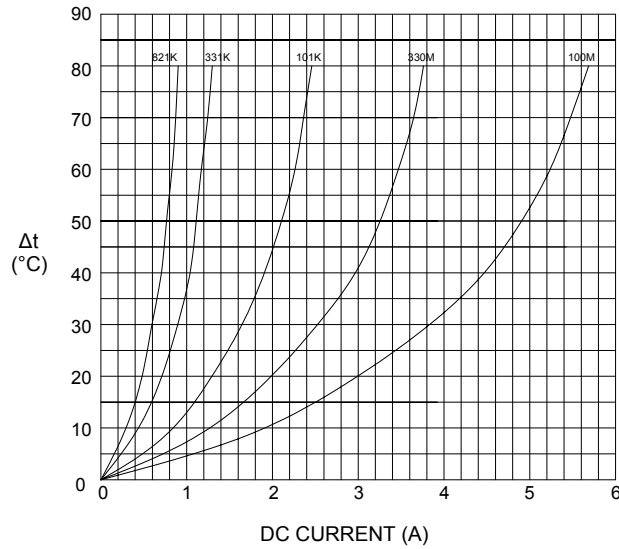
01.05.2008



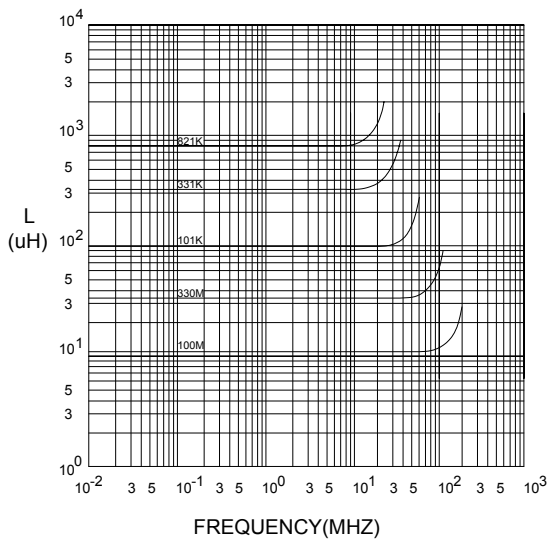
SUPERWORLD ELECTRONICS (S) PTE LTD

6. ELECTRICAL CHARACTERISTICS :

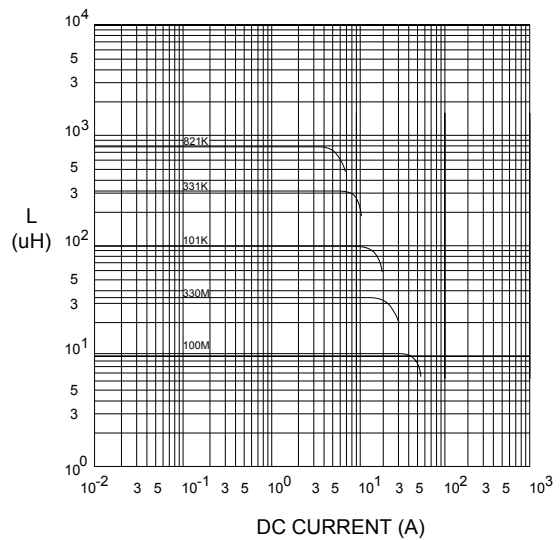
@ TEMP. RISE VS. DC SUPERPOSITION RESPONSE CURVE



@ INDUCTANCE VS. FREQUENCY RESPONSE CURVE



@ INDUCTANCE VS. DC SUPERPOSITION RESPONSE CURVE



NOTE : Specifications subject to change without notice. Please check our website for latest information.



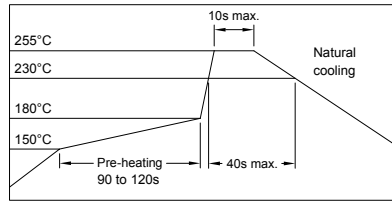
RoHS Compliant

01.05.2008



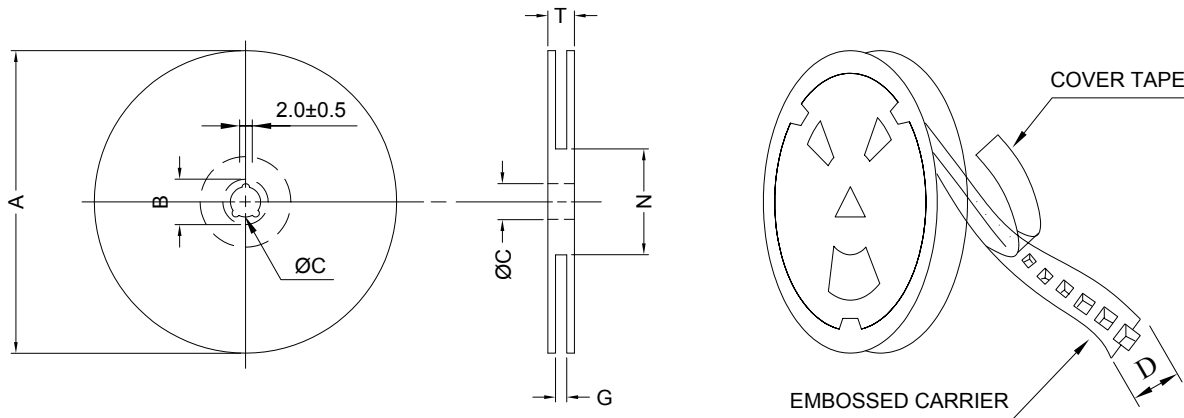
SUPERWORLD ELECTRONICS (S) PTE LTD

RECOMMENDED SOLDERING CONDITIONS REFLOW SOLDERINGS

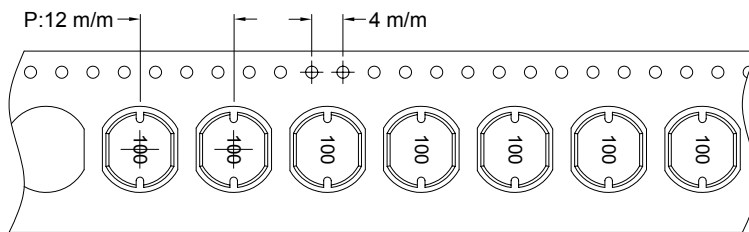


8. PACKAGING INFORMATION :

(1) CONFIGURATION



* CARRIER TAPE WIDTH : D



(2) DIMENSIONS

Unit:m/m

STYLE	A	B	C	D	G	N	T
13-24	330	21±0.8	13±0.5	24	26 ⁺⁰	50 ⁻⁰	30.4

(3) Q'TY & G.W. PER PACKAGE

SERIES	INNER : REEL			OUTER : CARTON		
	Q'TY (PCS)	G.W. (gw)	STYLE	Q'TY (PCS)	G.W. (Kg)	SIZE (cm)
PDC1005	500	1125	13 - 24	2000	8.0	40 x 40 x 24
PDC1005	800	1800	13 - 24	3200	10.7	40 x 40 x 24



RoHS Compliant

NOTE : Specifications subject to change without notice. Please check our website for latest information.

01.05.2008



SUPERWORLD ELECTRONICS (S) PTE LTD

