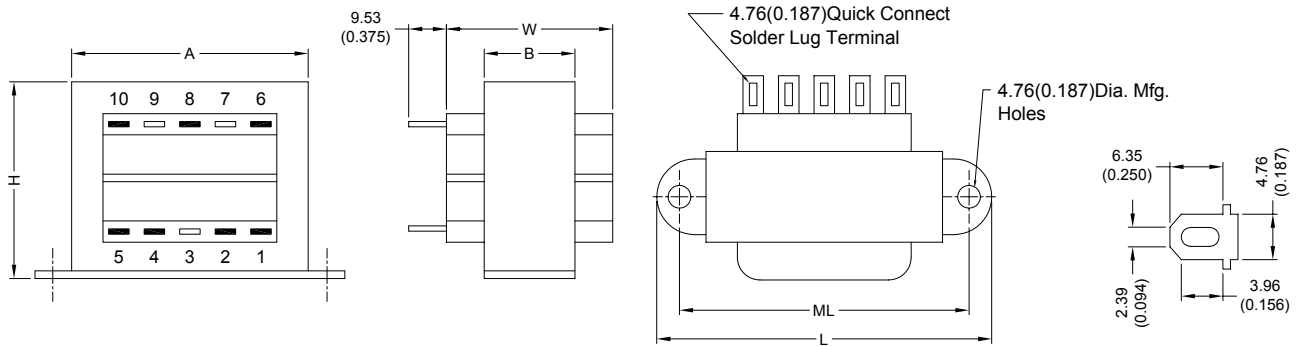


POWER TRANSFORMER

DCS7-48 (F) SERIES

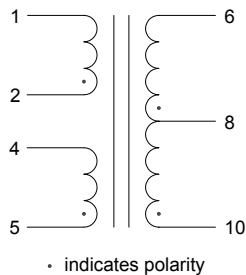
1. CONFIGURATION & DIMENSIONS :



UNIT : mm (inch)

| SIZE | VA | L | W | H | A | B | ML | gram |
|------|----|------------------|------------------|------------------|------------------|------------------|------------------|--------|
| 7 | 56 | 93.68 (3.688) | 46.05 (1.813) | 57.15 (2.250) | 68.28 (2.688) | 27.00 (1.063) | 79.38 (3.125) | 771.11 |

2. SCHEMATIC :



3. ELECTRICAL CHARACTERISTICS (@ 25°C) :

- | | |
|--------------------------------------|------------------------------|
| a. Primary Voltage | AC 115/230 V 50/60 Hz . |
| b. No Load Primary Current | Less Than 80mA / 105mA . |
| c. Secondary Voltage (±5%) | |
| Pin 6-10 C.T. Pin 8 | AC 55.00 V / 55.00 V . |
| d. Secondary Load Current | 1.20A . |
| e. Full Load Primary Current | Less Than 620mA / 330mA . |
| f. Full Load Secondary Voltage (±5%) | 48.00V / 48.00V . |
| Pin 6-10 C.T. Pin 8 | |
| g. DC Resistance | |
| Pin 1-2 | Primary-1 = 18.00 Ohm . |
| Pin 4-5 | Primary-2 = 21.80 Ohm . |
| Pin 6-8 | Secondary-1 = 1.05 Ohm . |
| Pin 8-10 | Secondary-2 = 1.23 Ohm . |
| h. Insulation Resistance | DC 500V 100Meg Ohm Of More . |
| i. Withstand Voltage (Hi-Pot) | AC 2500V 60Hz 1 Minutes . |
| j. Temperature Rise | Less Than 60 Deg C . |
| k. Core Size | EI-66 x 26.00 m/m . |

l. Turns & Wire Gauge

| | | | | |
|-----------|------------|-----------|----------------|---------|
| Primary-1 | Pin 1-2 | 385 | Turns Diameter | 0.20 mm |
| Primary-2 | Pin 4-5 | 385 | Turns Diameter | 0.20 mm |
| Secondary | Pin 6-8-10 | 0-139-278 | Turns Diameter | 0.60 mm |



RoHS Compliant

NOTE : Specifications subject to change without notice. Please check our website for latest information.

25.02.2008



SUPERWORLD ELECTRONICS (S) PTE LTD