

P-tec Corp. Tel:(800)688-0613  
 2405 Commerce Circle Tel:(719) 589 3122  
 Alamosa Co. 81101 Fax:(719) 589 3592  
 www.p-tec.net sales@p-tec.net



## PL00250 Series SMD LED 1206 Package

### Features

- \*Round Dome Lens Package 3.2 x 1.6 x 1.8mm
- \*AlGaInP Ultra Bright Green Chip used
- \*Narrow Viewing Angle
- \*Low Current Requirements
- \*High Light Output
- \*Compatible with IR Solder-Process
- \*Industry Standard Footprint
- \*2000 or 1000 pcs per Reel
- \*RoHS Compliant

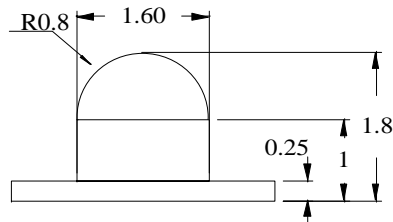
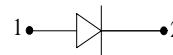
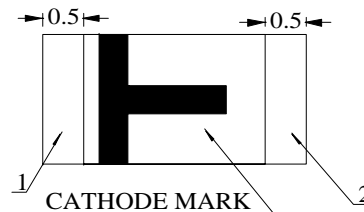
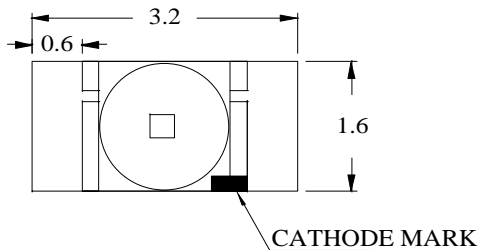
### Absolute Maximum Ratings at T<sub>A</sub> = 25°C

|                                                                |                      |
|----------------------------------------------------------------|----------------------|
| Power Dissipation.....                                         | 78mW                 |
| Reverse Voltage (<100µA) .....                                 | 5.0V                 |
| Max Forward Current .....                                      | 30mA                 |
| Peak Forward Current (1/10 Duty Cycle, 0.1ms Pulse Width)..... | 100mA                |
| Operating Temperature Range .....                              | -40°C to +85°C       |
| Storage Temperature Range .....                                | -40°C to +85°C       |
| Reflow Soldering Temperature.....                              | 260°C for 10 seconds |

### Electrical & Optical Characteristics at T<sub>A</sub> = 25°C

| Part Number      | Emitting Color | Chip Material | Dominant Wave Length | Peak Wave Length | Viewing Angle 2θ1/2 | Forward Voltage @20mA (V) |     | Luminous Intensity @20mA (mcd) |       |
|------------------|----------------|---------------|----------------------|------------------|---------------------|---------------------------|-----|--------------------------------|-------|
|                  |                |               |                      |                  |                     | Typ                       | Max | Min                            | Typ   |
| Water Clear Lens |                |               | nm                   | nm               | Deg                 | Typ                       | Max | Min                            | Typ   |
| PL00250-WCG17    | Yellow-Green   | AlGaInP       | 570                  | 574              | 40°                 | 2.1                       | 2.6 | 110.0                          | 330.0 |

Package Dimensions are in **Millimeters**. Tolerance is ± 0.25mm unless otherwise specified.



### Recommended Soldering Pad Layout

