



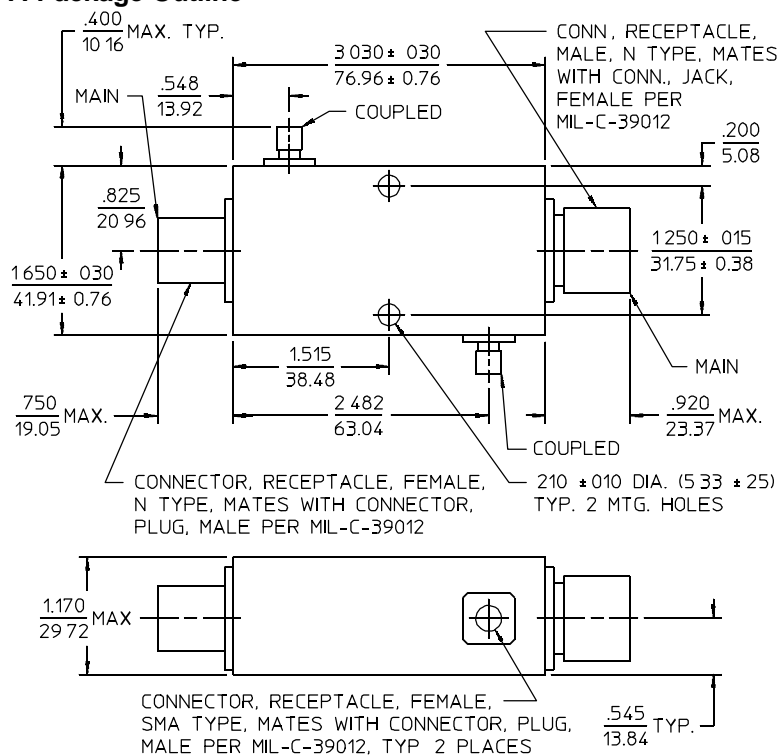
**PRINCIPAL SPECIFICATIONS**

Model Number	Frequency Range, GHz	Coupling Value, dB	Coupling Flatness, dB	Directivity, dB		*Insertion Loss, dB		VSWR, Main Line		CW Input, W, Max.	Pkg. Out. Ref.
				Typ.	Min.	Typ.	Max.	Typ.	Max.		
CGN-30-0.9G	0.8 - 0.96	30 ± 1	± 0.2	30	25	0.07	0.1	1.05:1	1.10:1	500	A
CGN-30-1G	0.7 - 1.4	30 ± 1	± 1.0	30	25	0.07	0.1	1.05:1	1.10:1	400	A
CGN-30-1.5G	1.0 - 2.0	30 ± 1	± 1.0	28	23	0.18	0.25	1.05:1	1.15:1	350	A
CGN-30-1.8G	1.8 - 1.9	30 ± 1	± 0.2	30	25	0.18	0.20	1.05:1	1.10:1	350	B
CGN-30-3G	2.0 - 4.0	30 ± 1	± 1.0	25	22	0.18	0.25	1.05:1	1.20:1	300	B
CGN-30-3.9G	2.6 - 5.2	30 ± 1	± 1.0	25	20	0.1	0.2	1.10:1	1.20:1	300	B
CGN-30-6G	4.0 - 8.0	30 ± 1	± 1.0	25	18	0.1	0.2	1.10:1	1.20:1	250	C

☐ Coupling is referenced to the input

\* Insertion Loss including Coupling "Loss"

**A-Package Outline**



**GENERAL SPECIFICATIONS**

VSWR, Coupled Line: 1.1:1 typ.,  
1.2:1 max.  
Peak Power, Main Line: 10 kW peak max.  
Impedance: 50 Ω nom.  
Operating Range: -55° to +85°C  
Connectors, SMA/N-type: To meet the interface requirements of MIL-C-39012.

**General Notes:**

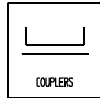
1. The CGN-30-G series of high power dual directional couplers monitor both forward and reflected power on antenna feeds. They comprise directional couplers on each side of the main line to minimize coupled length and resulting insertion loss. Models are available for Cellular, GSM and PCN/PCS base stations.
2. Heat generated by losses and reflections is quickly dissipated from the main line through highly conductive materials and loads to optimize performance and enhance reliability.
3. These models comply with MIL-C-15370 and may be supplied screened for compliance with additional specifications you designate for military and aerospace applications requiring higher reliability.

24May96

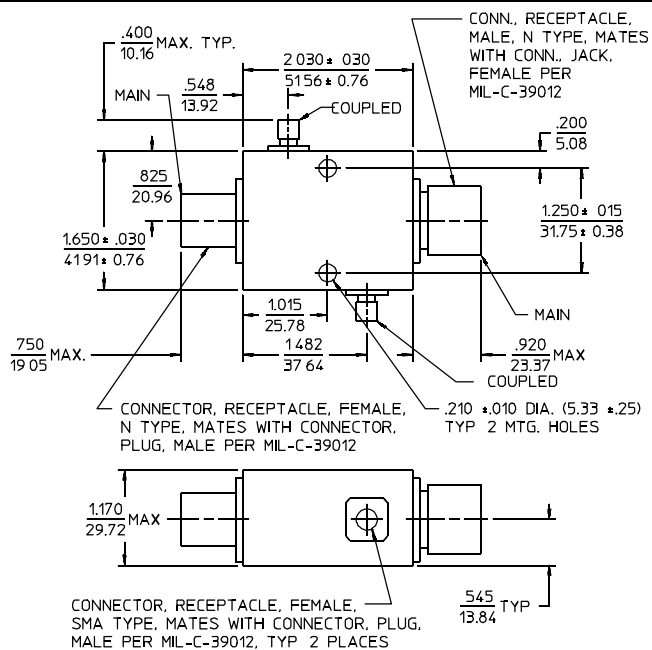
**CGN-30-G Series**

**DUAL DIRECTIONAL COUPLERS**

0.7 to 8 GHz / Very Low Insertion Loss / 500 W CW Failsafe / 30 dB Coupling to Both Ports / N-type

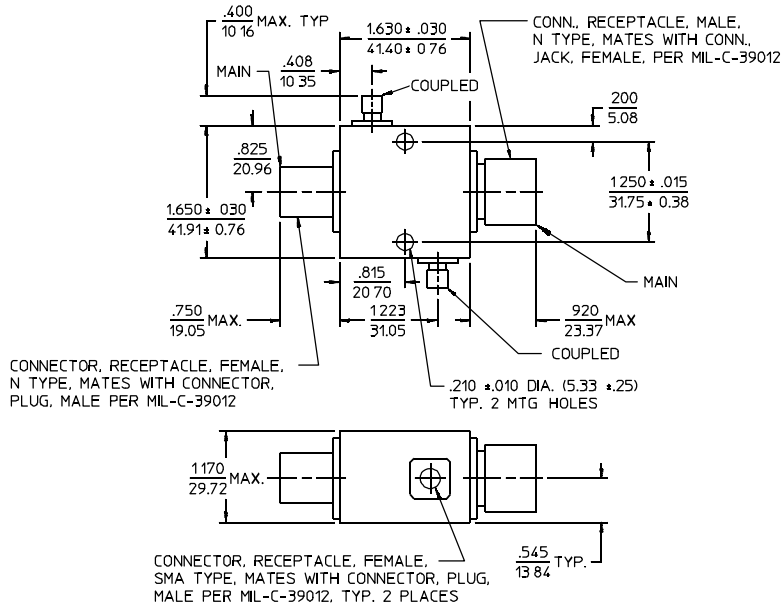


**B - Package Outline**



- NOTES:**
1. Tolerance on 3 place decimals  $\pm .020$  (.51) except as noted.
  2. Dimensions in inches over mm.
  3. Weights, nom.: Package A: 12 oz (335 g)  
Package B: 8.5 oz (238 g)  
Package C: 6 oz (168 g)

**C - Package Outline**



21Feb9696