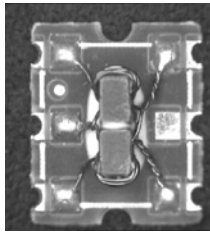


E-Series 75 Ohm Coupler 5 - 1000 MHz

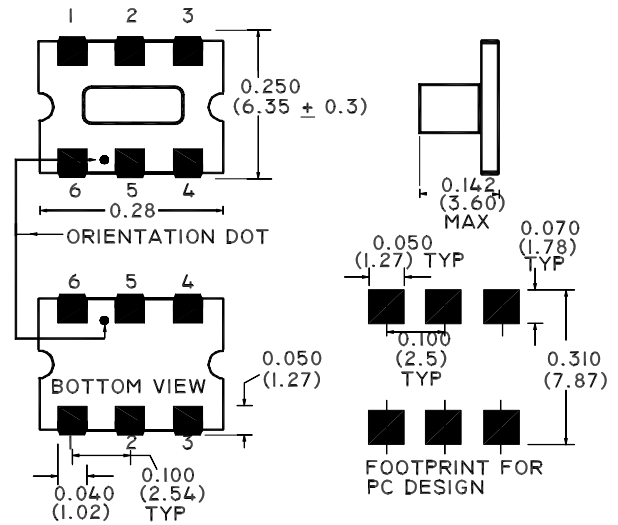


Features

- Coupling 14db Typical
- Surface Mount
- Tape and Reel Packaging available



SM-55 Package



Description

M/A-COM's ELDC-14 is a high performance 75 Ohm Coupler, in an SM-55 low cost, surface mount package. The ELDC-14 is designed for use in high volume CATV applications. Typical applications include Set-top Boxes, Network Interface Units, Cable Amplifiers and Headend equipment.

Electrical Specifications @25°C, Z₀ = 75 Ohms

Frequency Range	5 - 1000 MHz	Units	Nominal	Typical	Minimum	Maximum
Mainline Loss	5 - 870 MHz	dB	—	0.8	—	1.5
	870 - 1000 MHz	dB	—	1.0	—	1.8
Coupling	5 - 870 MHz	dB	14.3	—	—	± 0.5
	870 - 1000 MHz	dB	14.3	—	—	± 0.7
Coupling Flatness		dB	—	—	—	0.8
Directivity	5 - 870 MHz	dB	—	25	15	—
	870 - 1000 MHz	dB	—	20	13	—
Input Return Loss	5 - 870 MHz	dB	—	25	20	—
	870 - 1000 MHz	dB	—	23	18	—
Output Return Loss	5 - 870 MHz	dB	—	25	20	—
	870 - 1000 MHz	dB	—	25	20	—
Coupled Return Loss	5 - 870 MHz	dB	—	23	18	—
	870 - 1000 MHz	dB	—	23	18	—

Please Note that the photograph above indicates package shape only, unit may be wired differently.

S 1371 D

ADVANCED: Data Sheets contain information regarding a product M/A-COM Technology Solutions is considering for development. Performance is based on target specifications, simulated results, and/or prototype measurements. Commitment to develop is not guaranteed.
PRELIMINARY: Data Sheets contain information regarding a product M/A-COM Technology Solutions has under development. Performance is based on engineering tests. Specifications are typical. Mechanical outline has been fixed. Engineering samples and/or test data may be available. Commitment to produce in volume is not guaranteed.

• **North America** Tel: 800.366.2266 • **Europe** Tel: +353.21.244.6400
 • **India** Tel: +91.80.4155721 • **China** Tel: +86.21.2407.1588
 Visit www.macomtech.com for additional data sheets and product information.

M/A-COM Technology Solutions Inc. and its affiliates reserve the right to make

Operating Characteristics

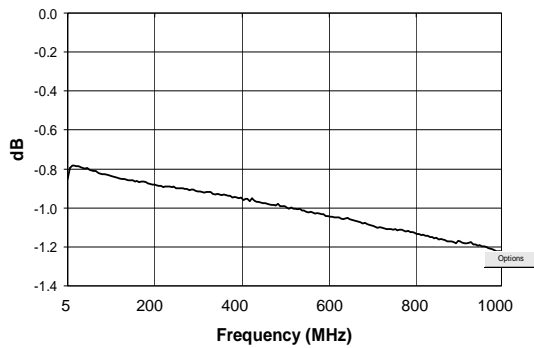
Function	Pin No.
Input	6
Output	1
Coupled	4
External 75 Ohms	3
Ground	5
Not Connected	2

Absolute Maximum Ratings

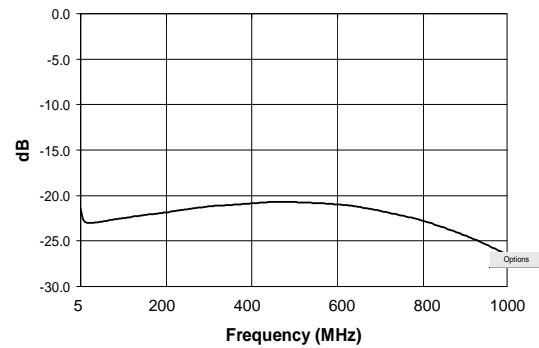
Parameter	Absolute Maximum
RF Power	250 mW
DC Current	30 mA
Pin Temperature (10 sec)	260°C
Operating/Storage Temperature	-40°C to +85°C

Typical Performance @ 25°C

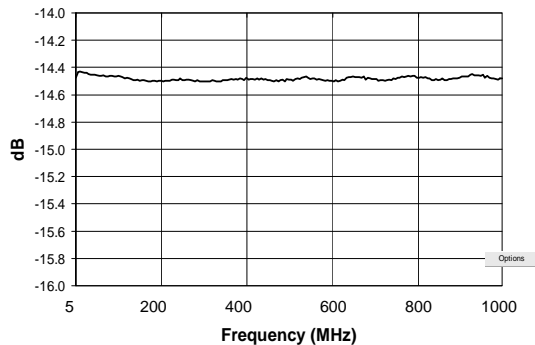
Mainline Loss



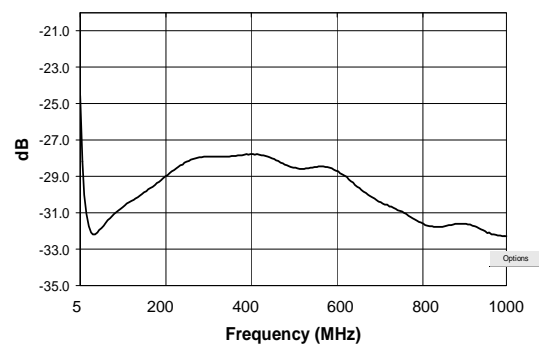
Input Return Loss



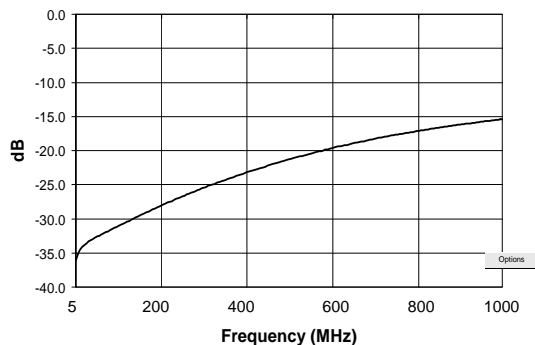
Coupling



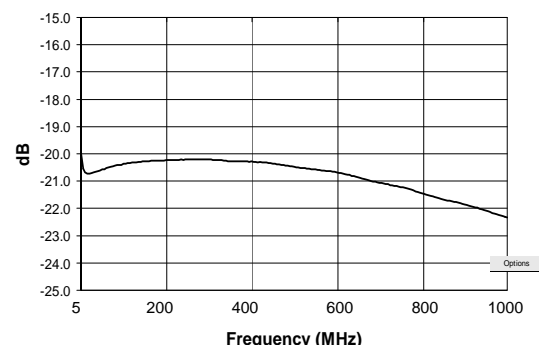
Output Return Loss



Directivity



Coupled Port Return Loss



S 1371 D

ADVANCED: Data Sheets contain information regarding a product M/A-COM Technology Solutions is considering for development. Performance is based on target specifications, simulated results, and/or prototype measurements. Commitment to develop is not guaranteed.
PRELIMINARY: Data Sheets contain information regarding a product M/A-COM Technology Solutions has under development. Performance is based on engineering tests. Specifications are typical. Mechanical outline has been fixed. Engineering samples and/or test data may be available. Commitment to produce in volume is not guaranteed.

• **North America** Tel: 800.366.2266 • **Europe** Tel: +353.21.244.6400
 • **India** Tel: +91.80.4155721 • **China** Tel: +86.21.2407.1588
 Visit www.macomtech.com for additional data sheets and product information.

M/A-COM Technology Solutions Inc. and its affiliates reserve the right to make