



# TAI-SAW TECHNOLOGY CO., LTD.

No. 3, Industrial 2nd Rd., Ping-Chen Industrial District,  
Taoyuan, 324, Taiwan, R.O.C.

TEL: 886-3-4690038 FAX: 886-3-4697532

E-mail: [tstsales@mail.taisaw.com](mailto:tstsales@mail.taisaw.com) Web: [www.taisaw.com](http://www.taisaw.com)

## Approval Sheet For Product Specification

Issued Date:

Product Name: SAW Filter 827.5MHz SMD 3.0×3.0 mm

TST Parts No.:TA0981A

Customer Parts No.: \_\_\_\_\_

Company: _____
Division: _____
Approved by : _____
Date: _____

Checked by: \_\_\_\_\_ David Chang 張開智

Approval by: \_\_\_\_\_ Francis Chen 陳文

Date: \_\_\_\_\_ 2009/02/02



# TAI-SAW TECHNOLOGY CO., LTD.

No. 3, Industrial 2nd Rd., Ping-Chen Industrial District,  
Taoyuan, 324, Taiwan, R.O.C.

TEL: 886-3-4690038 FAX: 886-3-4697532

E-mail: [tstsales@mail.taisaw.com](mailto:tstsales@mail.taisaw.com) Web: [www.taisaw.com](http://www.taisaw.com)

## SAW Filter 827.5 MHz

MODEL NO.: TA981A

REV. NO.:1

### A. MAXIMUM RATING:

1. Input Power Level: 10 dB<sub>m</sub>
2. DC voltage: 3 V
3. Operating Temperature: -30°C to 85°C
4. Storage Temperature: -40°C to +85°C

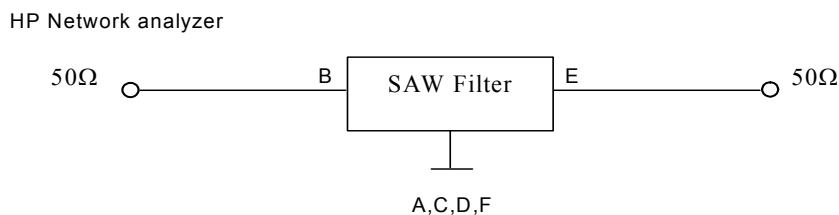
RoHS Compliant  
Lead free  
Lead-free soldering

### B. CHARACTERISTICS:

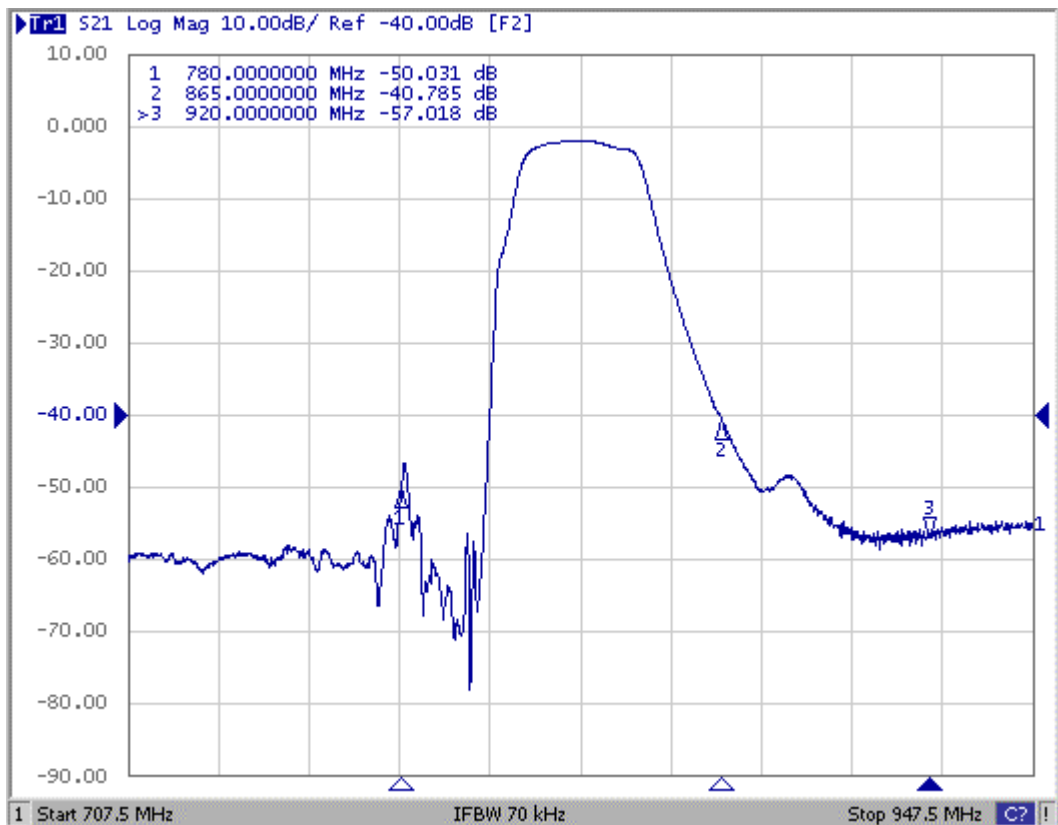
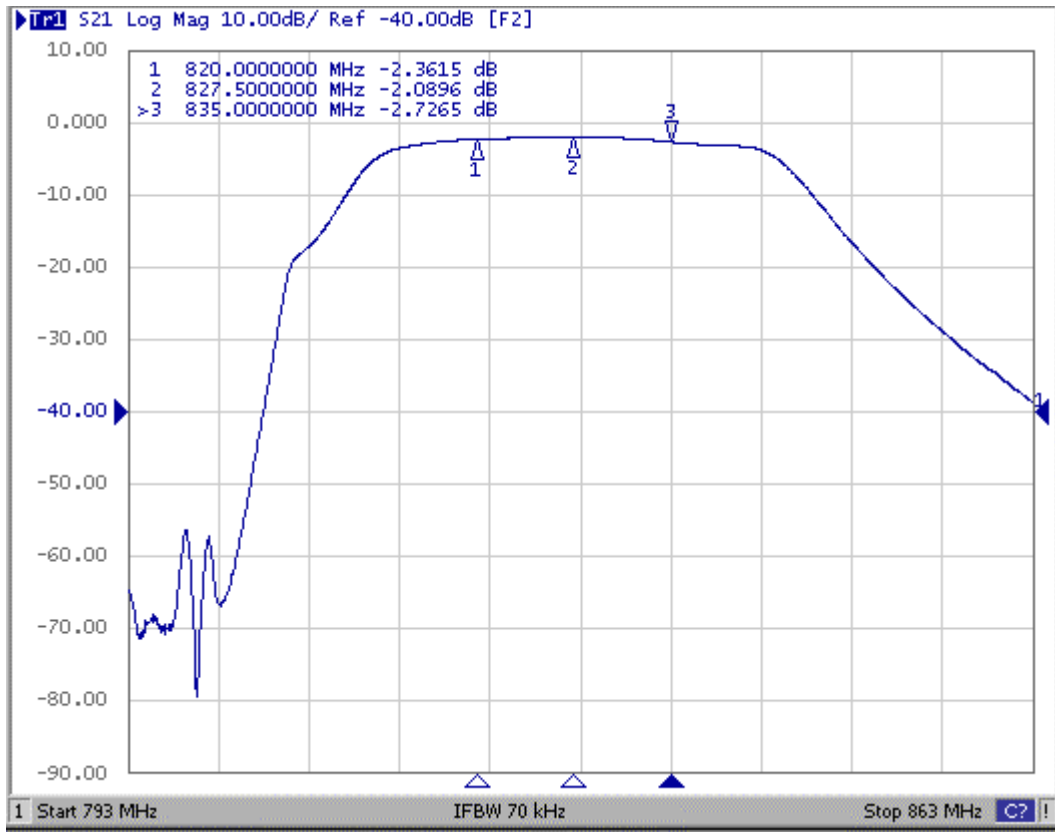
Item	Unit	Min.	Typ.	Max.		
Center frequency	F <sub>c</sub>	MHz	-	827.5	-	
Insertion loss	820 ~ 835 MHz	IL	dB	-	2.7	3.5
Amplitude ripple	820 ~ 835 MHz	dB	-	0.7	1.5	
VSWR	820 ~ 835 MHz	-	-	1.5	2.0	
Attenuation (reference from 0dB)						
10 ~ 780 MHz		dB	40	45	-	
865 ~ 880 MHz		dB	25	32	-	
880 ~ 920 MHz		dB	35	40	-	
920 ~ 1220 MHz		dB	40	45	-	
Source impedance	Z <sub>S</sub>	Ω	-	50	-	
Load impedance	Z <sub>L</sub>	Ω	-	50	-	

Note1. No matching network required for operation at 50Ω

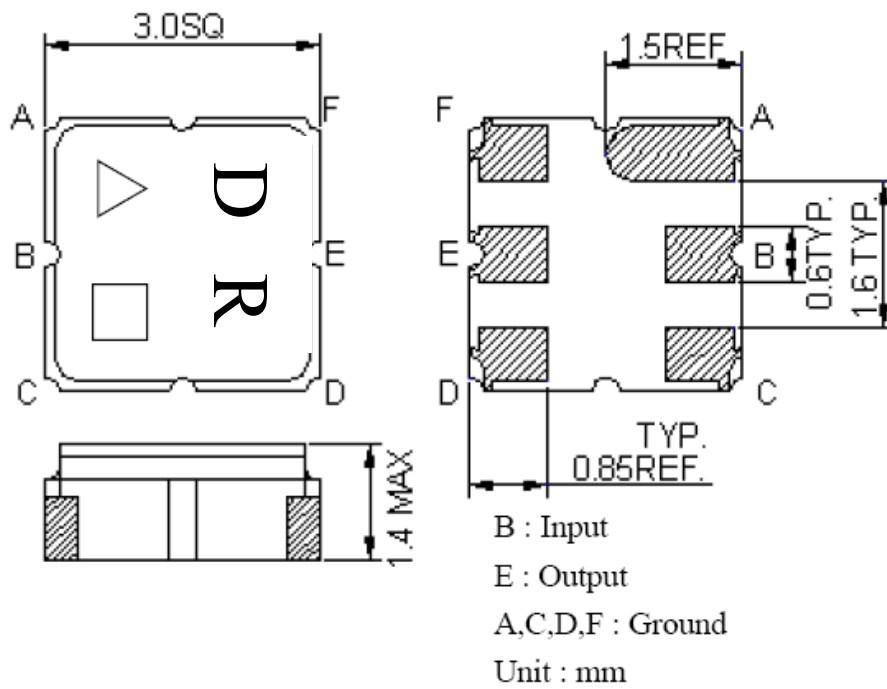
### C. MEASUREMENT CIRCUIT:



**D. Transfer Function :**



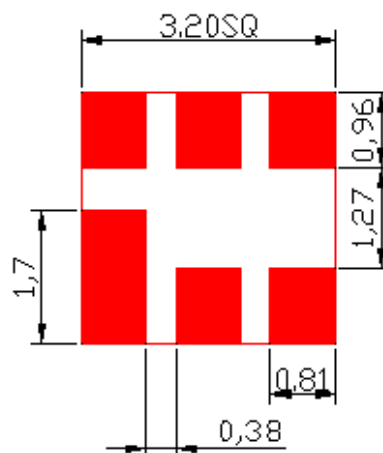
**E.OUTLINE DRAWING:**



△ : Year Code (2006->6, ..., 2009->9)

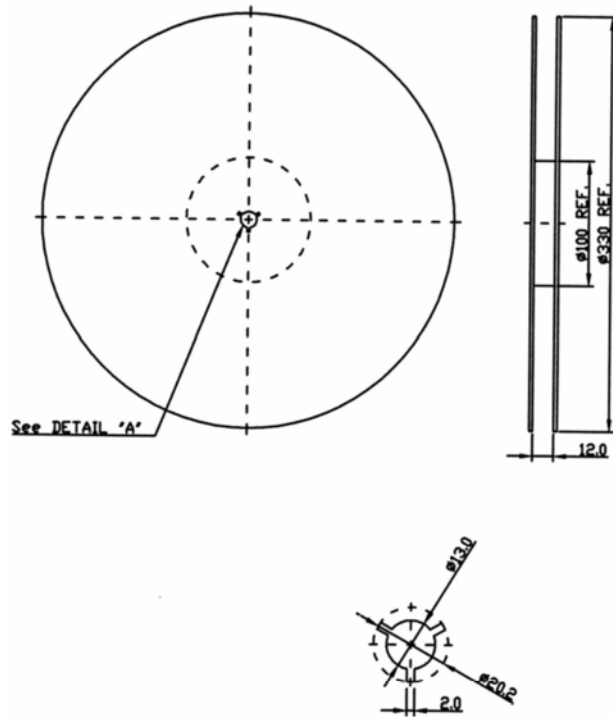
□ : Date Code (W01->A,W02->B,...W27->a,...,W52->z)

**F.PCB FOOTPRINT:**

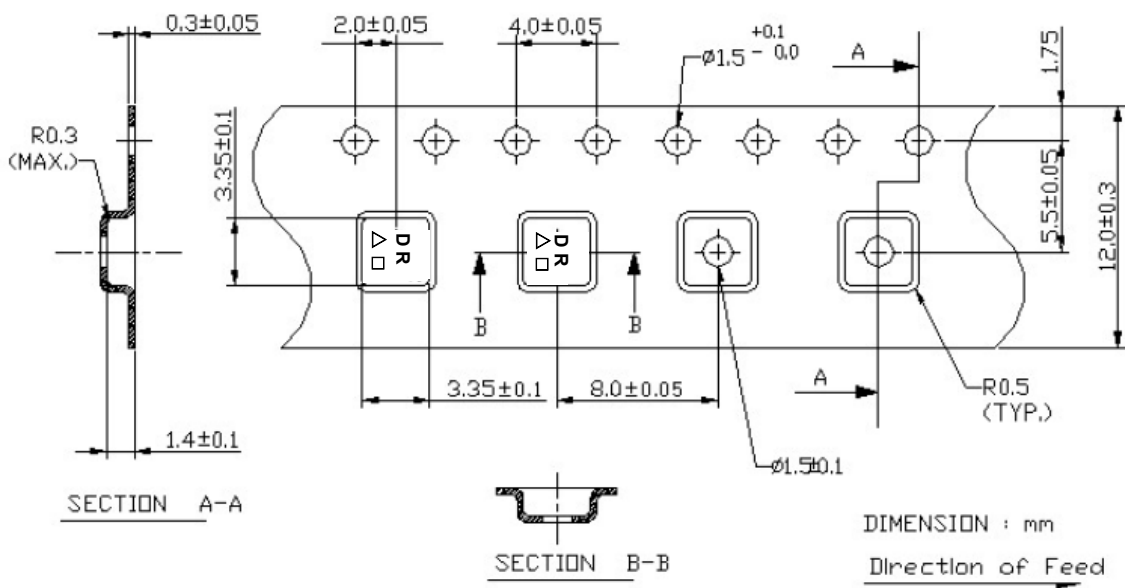


**G. PACKING:**

**1. REEL DIMENSION**



**2. TAPE DIMENSION**



**H. RECOMMENDED REFLOW PROFILE :**

