

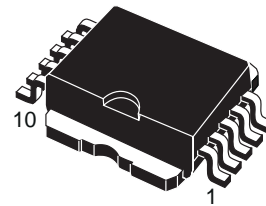
DIMENSIONS						
REF.	mm			inch		
	MIN.	TYP.	MAX.	MIN.	TYP.	MAX.
A	3.35		3.65	0.132		0.144
A1	0.00		0.10	0.000		0.004
B	0.40		0.60	0.016		0.024
c	0.35		0.55	0.013		0.022
D	9.40		9.60	0.370		0.378
D1	7.40		7.60	0.291		0.300
E	9.30		9.50	0.366		0.374
E1	7.20		7.40	0.283		0.291
E2	7.20		7.60	0.283		0.300
E3	6.10		6.35	0.240		0.250
E4	5.90		6.10	0.232		0.240
e		1.27			0.050	
F	1.25		1.35	0.049		0.053
H	13.80		14.40	0.543		0.567
h		0.50			0.002	
L	1.20		1.80	0.047		0.071
q		1.70			0.067	
α	0°		8°			



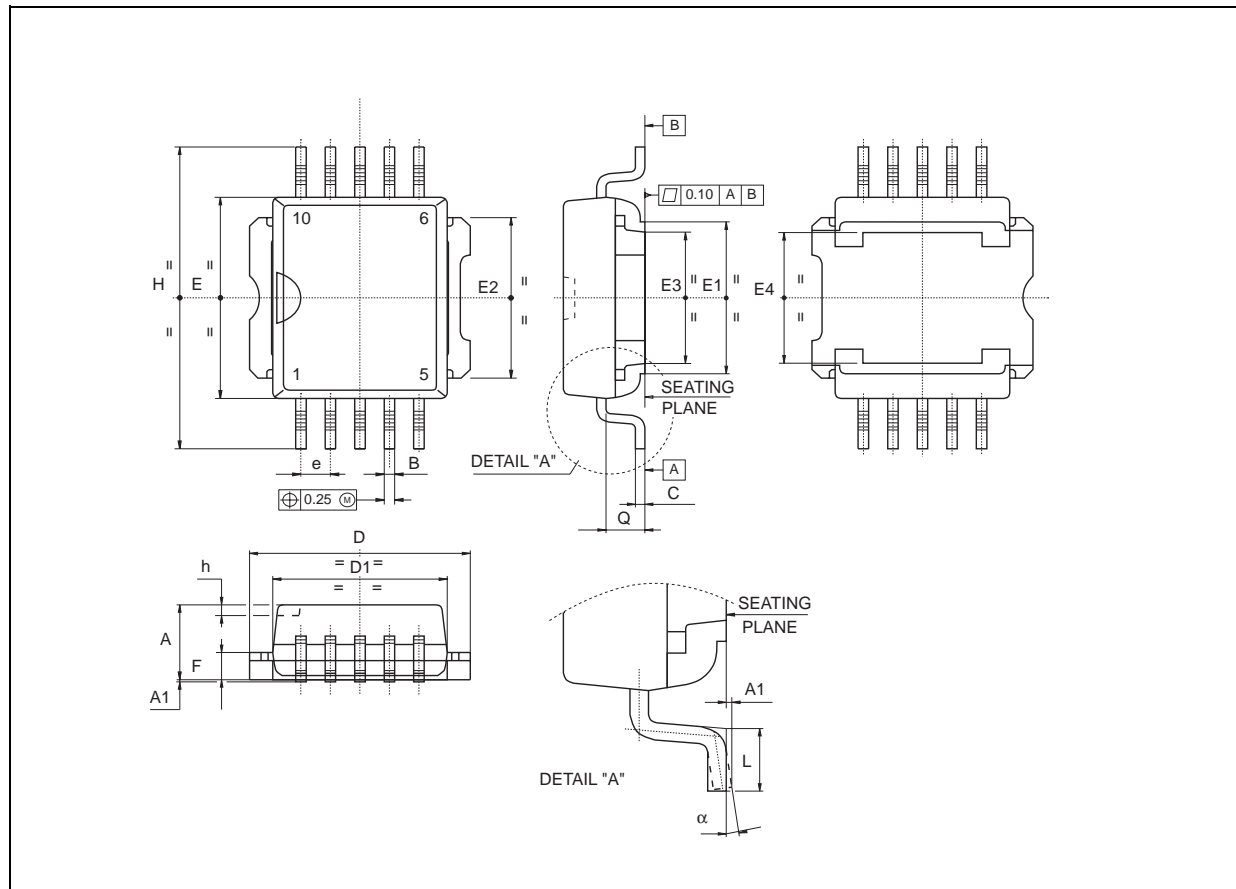
**PACKAGE AND
PACKING INFORMATION**

**10LEADS POWER
SMALL OUTLINE PACKAGE**

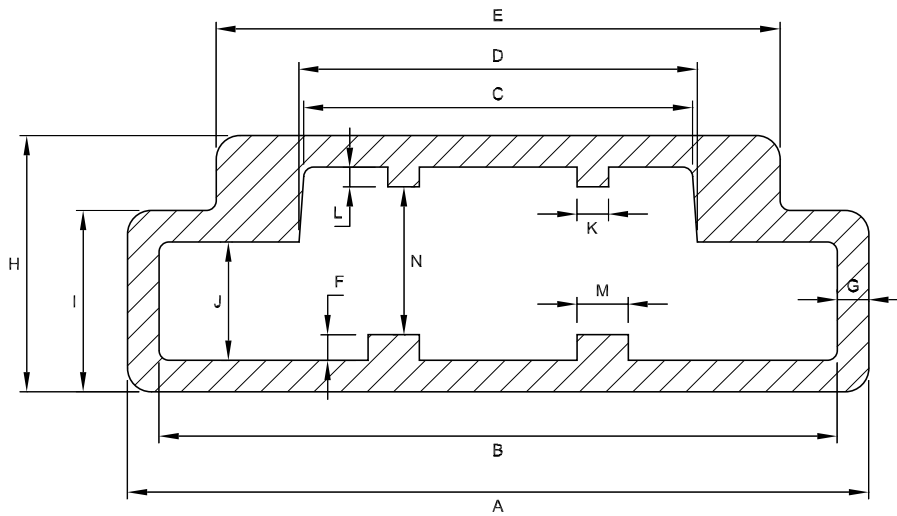
Weight: 1.14g



PowerSO-10



TUBE SHIPMENT INFORMATION

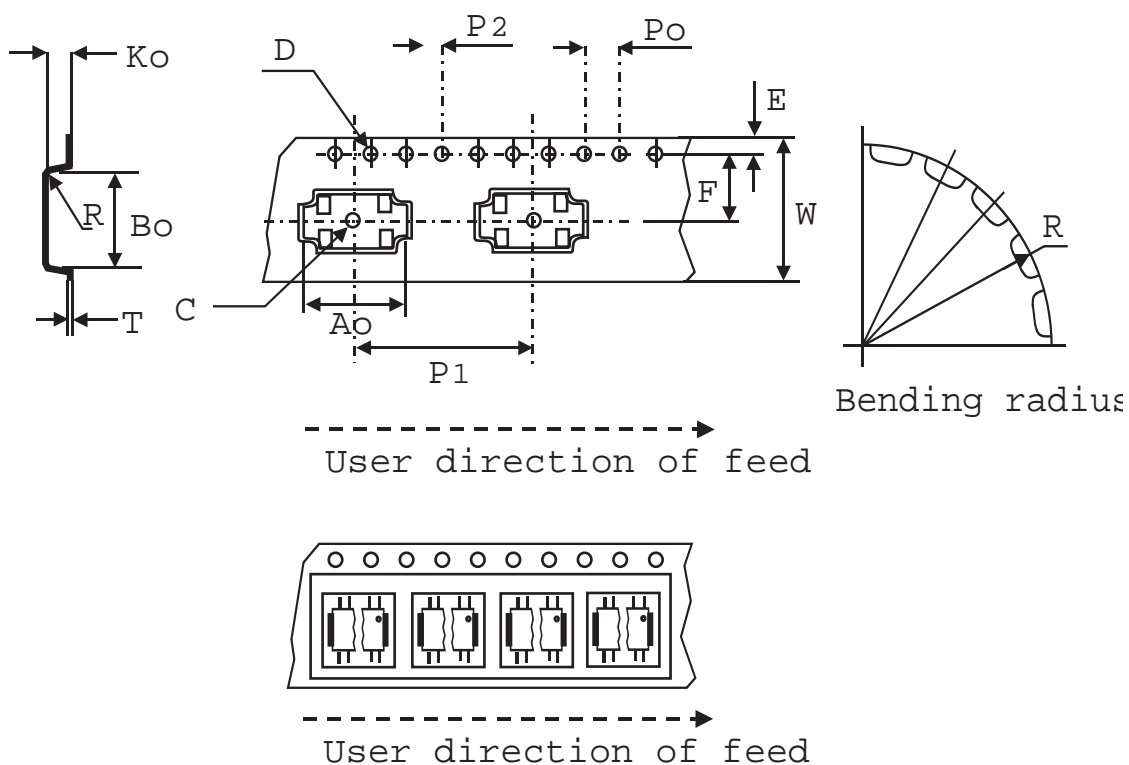


TUBE MECHANICAL DATA		
	mm.	inch
A	18.80	0.740
B	17.2 ±0.2	0.677 ±0.008
C	9.90 ±0.2	0.390 ±0.008
D	10.10 ±0.2	0.397 ±0.008
E	14.30 ±0.2	0.563 ±0.008
F	0.65	0.025
G	0.80 ±0.1	0.031 ±0.004
H	6.50 ±0.2	0.256 ±0.008
I	4.60 ±0.2	0.181 ±0.008
J	3.0 ±0.2	0.118 ±0.008
K	0.80	0.031
L	0.50	0.020
M	1.3	0.051
N	3.75 ±0.2	0.147 ±0.008

BASE QUANTITY	50 pcs.
BULK QUANTITY	1000 pcs.

TAPE & REEL SHIPMENT INFORMATION

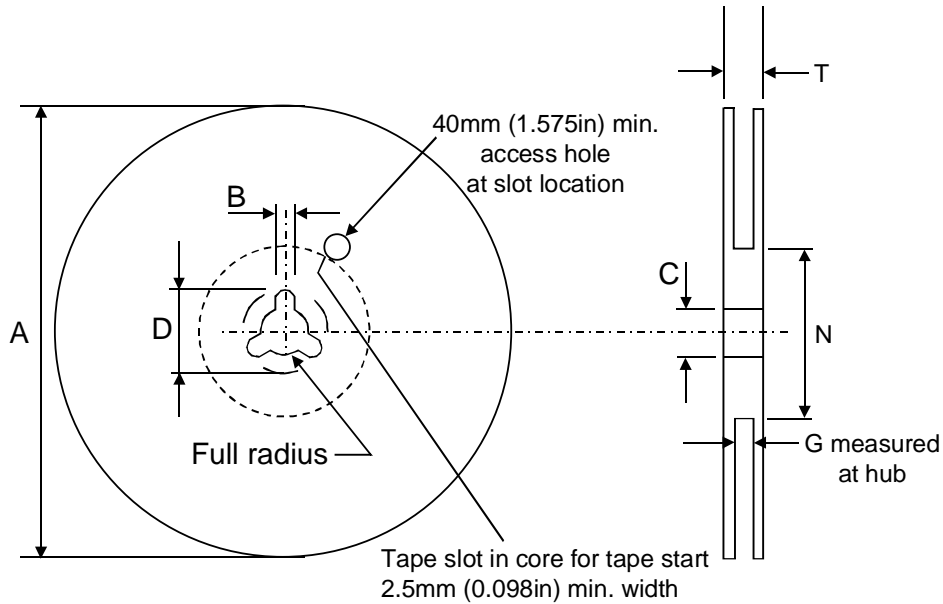
TAPE SPECIFICATIONS



TAPE MECHANICAL DATA		
	mm.	inch
D	1.50 +0.1/0	0.059 +0.004/0
E	1.75 ±0.1	0.069 ±0.004
Po	4.00 ±0.1	0.157 ±0.004
T max.	0.40	0.016
D1 min.	1.50	0.059
F	11.5 ±0.05	0.453 ±0.002
K max.	6.50	0.256
P2	2.00 ±0.1	0.079 ±0.004
R	50	1.968
W	24.00 ±0.30	0.945 ±0.012
P1	24.00	0.945
Ao, Bo, Ko	0.05 min to 1.0 max.	0.002 min to 0.039 max.

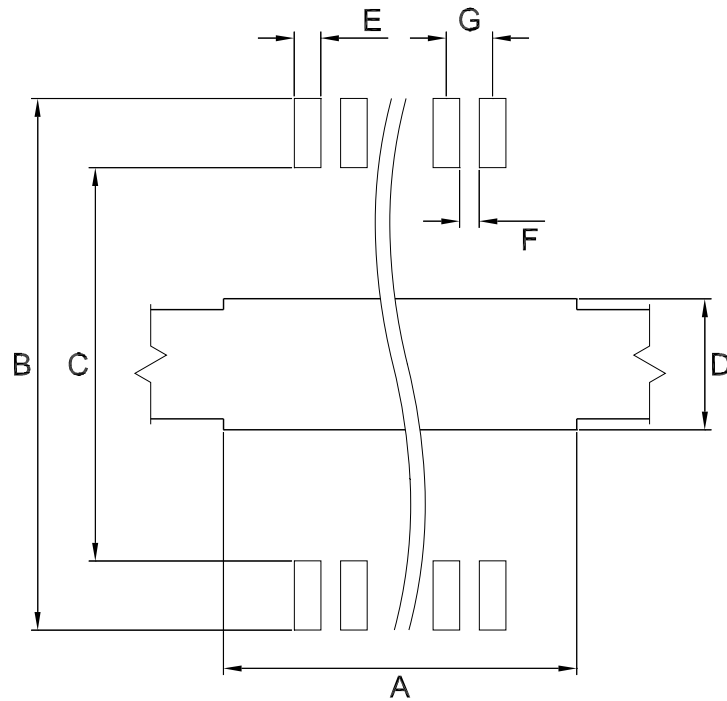
BASE QUANTITY	600 pcs.
BULK QUANTITY	600 pcs.

TAPE & REEL SHIPMENT INFORMATION
REEL SPECIFICATIONS



REEL MECHANICAL DATA		
	mm.	inch
Tape size	24.0 ±0.30	0.945 ±0.012
A max.	330.0	12.992
B min.	1.5	0.059
C	13.0 ±0.20	0.512 ±0.008
D min.	20.2	0.795
N min.	60	2.362
G	24.4 +2/-0	0.960 +0.079/-0
T max.	30.4	1.197

FOOTPRINT RECOMMENDED DATA



FOOTPRINT DATA		
	mm.	inch
A	9.5	0.374
B	14.6-14.9	0.575-0.587
C	10.8-11	0.425-0.433
D	6.3	0.248
E	0.67-0.73	0.026-0.029
F	0.54-0.60	0.021-0.024
G	1.27	0.050