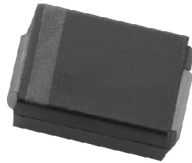


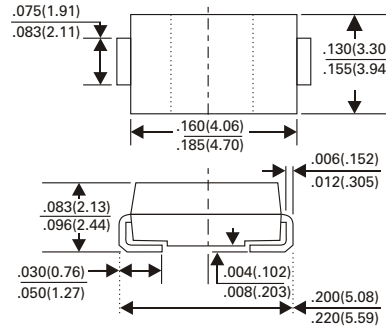
SMB5921B thru SMB5949B

SURFACE MOUNT ZENER TYPE

SURFACE MOUNT ZENER DIODES 3.0 WATTS



SMB/DO-214AA



Dimensions in inches and (millimeters)

FEATURES

- Low profile package
- Built-in strain relief
- Low inductance
- Typical I_D less than 1.0 μ A above 11V
- Plastic package has Underwriters Laboratory Flammability Classification 94V-0
- High temperature soldering : 260°C /10 seconds at terminals
- Pb free product are available : 99% Sn can meet RoHS environment substance directive request

MECHANICAL DATA

Case: JEDEC DO-214AA, Molded plastic over passivated junction
 Terminals: Solder plated, solderable per MIL-STD-750, Method 2026
 Polarity: Indicated by cathode band
 Standard packing: 12mm tape (E1A-481)
 Weight: 0.003 ounce, 0.093 gram

MAXIMUM RATINGS (at $T_A=25^\circ\text{C}$ unless otherwise noted)

Parameter	Symbol	Value	Units
Peak Pulse Power Dissipation on $T_A=50^\circ\text{C}$ (Notes A) Derate above 70°C	P_D	3.0 24.0	Watts mW/°C
Peak Forward Surge Current 8.3ms single half sine-wave superimposed on rated load (JEDEC method)	I_{FSM}	15	Amps
Operating Junction and Storage Temperature Range	T_J, T_{STG}	-55 to + 150	°C

NOTES:

A. Mounted on 5.0mm² (.013mm thick) land areas.

B. Measured on 8.3ms, and single half sine-wave or equivalent square wave, duty cycle=4 pulses per minute maximum

SMB5921B thru SMB5949B

SURFACE MOUNT ZENER TYPE

SURFACE MOUNT ZENER DIODES 3.0WATTS

ELECTRICAL CHARACTERISTICS (at T_A=25°C unless otherwise noted)

Part No.	Marking Code	Nominal Zener Voltage		Max.Zener Impedance				Max.Zener Reverse Leakage Current		Max. DC Zener Current
		V _Z @ I _{ZT}		Z _{ZT} @ I _{ZT}		Z _{ZK} @ I _{ZK}		I _R @ V _R		I _{ZM}
		Nom.V	mA	Ω	mA	Ω	mA	μA	V	mA
SMB5921B	5921B	6.8	55.1	2.5	55.1	200	1.0	5.0	5.2	440
SMB5922B	5922B	7.5	50.0	3.0	50.0	400	0.5	5.0	6.0	400
SMB5923B	5923B	8.2	45.7	3.5	45.7	400	0.5	5.0	6.5	364
SMB5924B	5924B	9.1	41.2	4.0	41.2	500	0.5	5.0	7.0	328
SMB5925B	5925B	10	37.5	4.5	37.5	500	0.25	5.0	8.0	300
SMB5926B	5926B	11	34.1	5.5	34.1	550	0.25	5.0	8.4	272
SMB5927B	5927B	12	31.2	6.5	31.2	550	0.25	1.0	9.1	250
SMB5928B	5928B	13	28.8	7.0	28.8	550	0.25	1.0	9.9	230
SMB5929B	5929B	15	25.0	9.0	25.0	600	0.25	1.0	11.4	200
SMB5930B	5930B	16	23.4	10	23.4	600	0.25	1.0	12.2	186
SMB5931B	5931B	18	20.8	12	20.8	650	0.25	1.0	13.7	166
SMB5932B	5932B	20	18.7	14	18.7	650	0.25	1.0	15.2	150
SMB5933B	5933B	22	17.0	17.5	17.0	650	0.25	1.0	16.7	136
SMB5934B	5934B	24	15.6	19	15.6	700	0.25	1.0	18.2	124
SMB5935B	5935B	27	13.9	23	13.9	700	0.25	1.0	20.6	110
SMB5936B	5936B	30	12.5	26	12.5	750	0.25	1.0	22.8	100
SMB5937B	5937B	33	11.4	33	11.4	800	0.25	1.0	25.1	90
SMB5938B	5938B	36	10.4	38	10.4	850	0.25	1.0	27.4	82
SMB5939B	5939B	39	9.6	45	9.6	900	0.25	1.0	29.7	76
SMB5940B	5940B	43	8.7	53	8.7	950	0.25	1.0	32.7	68
SMB5941B	5941B	47	8.0	67	8.0	1000	0.25	1.0	35.8	62
SMB5942B	5942B	51	7.3	70	7.3	1100	0.25	1.0	38.8	58
SMB5943B	5943B	56	6.7	86	6.7	1300	0.25	1.0	42.6	52
SMB5944B	5944B	62	6.0	100	6.0	1500	0.25	1.0	47.1	48
SMB5945B	5945B	68	5.5	120	5.5	1700	0.25	1.0	51.7	44
SMB5946B	5946B	75	5.0	140	5.0	2000	0.25	1.0	56.0	40
SMB5947B	5947B	82	4.6	160	4.6	2500	0.25	1.0	62.2	36
SMB5948B	5948B	91	4.1	200	4.1	3000	0.25	1.0	69.2	32
SMB5949B	5949B	100	3.7	250	3.7	3100	0.25	1.0	76.0	30