



Part Number	Package	Application	Last Modified
873-IF190.0M-E	3.8 x 3.8mm SMD	Base Station & Repeater	Apr 18, 2007

TYPE :  
190.0 MHz Bandpass Filter  
WCDMA Application



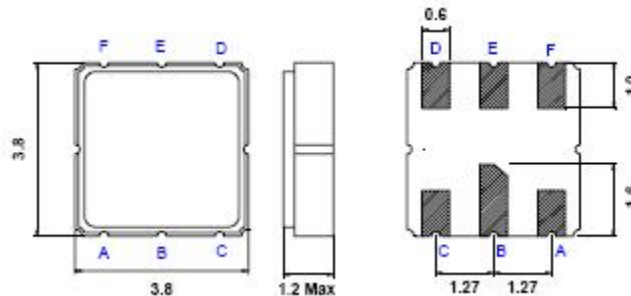
PART NUMBER :  
**873-IF190.0M-E**

**OPERATING CONDITIONS / ELECTRICAL CHARACTERISTICS**

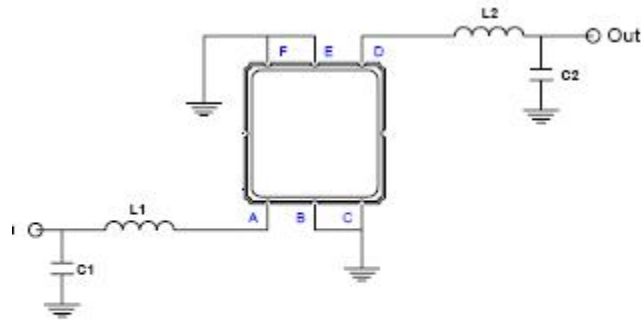
PARAMETERS	Minimum	Typical	Maximum	Units
Center Frequency (Fo)	-	190.0	-	MHz
Insertion Loss at Fo	-	5.0	7.0	dB
Source Impedance*	-	50/1000	-	ohm
Load Impedance*	-	50/1000	-	ohm
Operating Temperature Range	0	-	+70	°C
Storage Temperature Range	-20	-	+85	°C
Relative Attenuation:	-	-	-	-
from +/-5.0MHz to +/-7.5MHz	10.0	19.0	-	dB
from +/-7.5MHz to +/-12.5MHz	25	33	-	dB
from +/-12.5MHz to +/-15MHz	35	37	-	dB
from +/-15MHz to +/-100MHz	40	43	-	dB
Amplitude Ripple within Fo +/-2.0MHz	-	0.9	2.0	dBp-p
Ultimate Rejection	50	55	-	dB
Group Delay Ripple (Fo +/-2.0MHz)	-	70	100	nsec
Input Power Level	-	+10	-	dBm

\*Single Ended/Balanced with Matching Network (Reference Testing Environment Circuit as shown) Modify Impedance Values as necessary.

**PACKAGE(mm)**

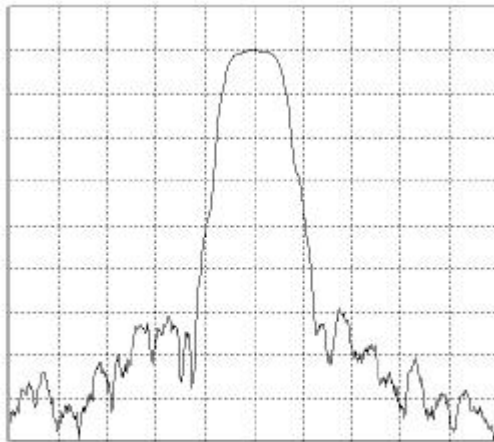


**TEST FIXTURE**

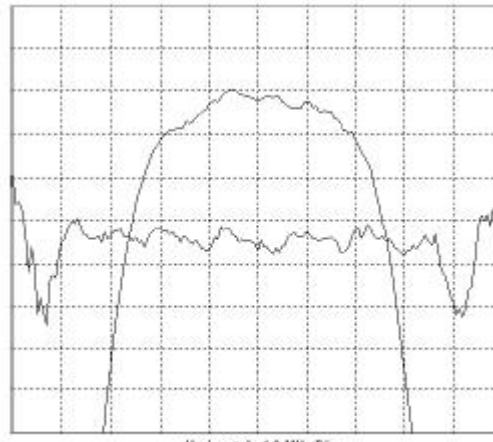


Single Ended Test Fixture		
Input	L1=100nH: Q.>40,	C1=27pF
Output	L2=100nH: Q.>40,	C2=27pF

## FREQUENCY RESPONSE



Horizontal: 5.0 MHz/Div  
Vertical: 5 dB/Div



Horizontal: 1.0 MHz/Div  
Vertical: 1 dB/Div  
Vertical: 100 ns/Div

**Oscilent Corporation** - CALL **949.252.0522**

18195 East McDermott Street . Building D . Irvine . CA 92614 . USA  
Fax: 949.252.0599 . E-Mail: Sales@Oscilent.com

**Part No.:** 873-IF190.0M-E