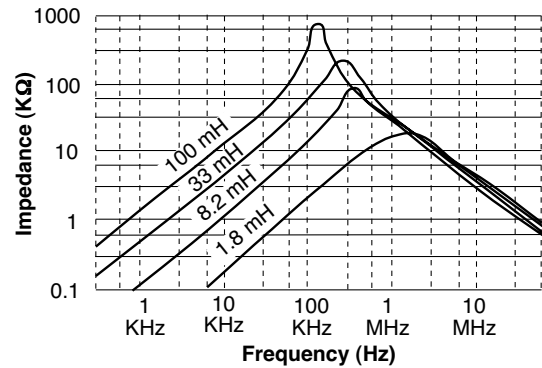


- Used as AC Power Line Filters in CTV, VTR, Audios, PC's, Facsimilies and Power Supply Applications
- UL940-V Recognized Materials
- Temperature Rise : 45°C Max.
- UL1446 Insulating System
- 2000 Vrms Isolation

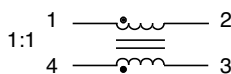
Electrical Parameters @ 25° C

Part Number	Inductance (mH Min.) [Pins 1-2, 4-3]	Current Rating (A rms Max.)
EPZ3048F-132	1.3	2.5
EPZ3048F-162	1.6	2.2
EPZ3048F-202	2.0	2.0
EPZ3048F-252	2.5	1.8
EPZ3048F-302	3.0	1.6
EPZ3048F-302A	3.0	1.8
EPZ3048F-402	4.0	1.4
EPZ3048F-402A	4.0	1.6
EPZ3048F-502	5.0	1.4
EPZ3048F-552	5.5	1.2
EPZ3048F-702	7.0	1.2
EPZ3048F-802	8.0	1.0
EPZ3048F-103	10	0.9
EPZ3048F-103A	10	1.0
EPZ3048F-123	12	0.8
EPZ3048F-123A	12	0.9
EPZ3048F-153	15	0.8
EPZ3048F-163	16	0.7
EPZ3048F-203	20	0.6
EPZ3048F-203A	20	0.7
EPZ3048F-283	28	0.6
EPZ3048F-303	30	0.5
EPZ3048F-503	50	0.4

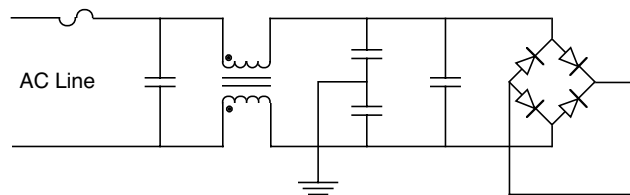
Impedance Characteristics



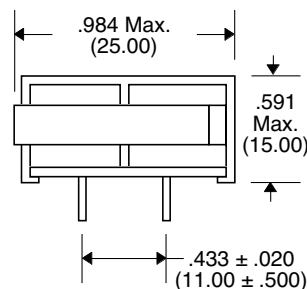
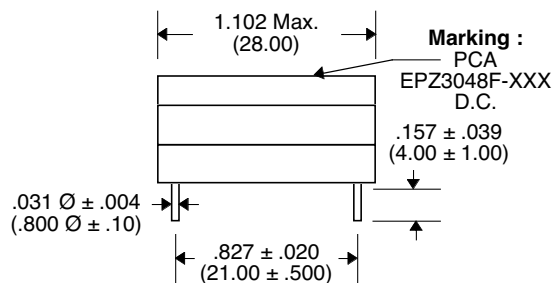
Schematic



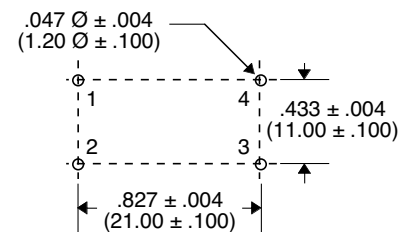
Circuit Sample



Package



Recommended PWB Piercing Plan



Unless Otherwise Specified Dimensions are in Inches /mm ± .010 / .25