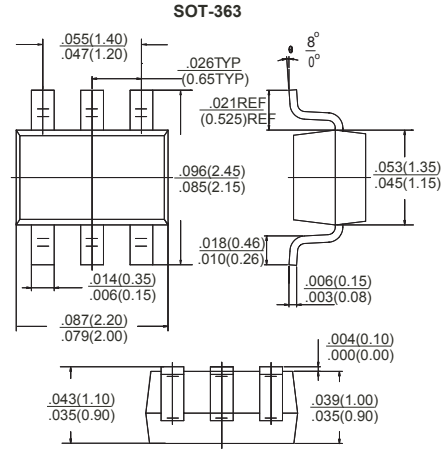
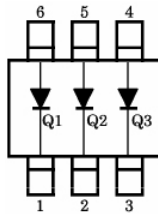


RoHS Compliant Product  
A suffix of "-C" specifies halogen & lead-free

### FEATURES

- High reliability
- Small power mold type
- Low VF



### MARKING

731

### MAXIMUM RATINGS AND ELECTRICAL CHARACTERISTICS

Rating 25°C ambient temperature unless otherwise specified.

TYPE NUMBER	SYMBOL	VALUES	UNITS
Maximum (peak) reverse voltage	$V_{RM}$	40	V
Reverse voltage (DC)	$V_R$	40	V
Average forward current	$I_O$	30	mA
Peak forward surge current (*)	$I_{FSM}$	200	mA
Junction & storage temperature	$T_J, T_{STG}$	125, -40 ~ 125	°C

(\*) 60 Hz for 1  $\infty$

### MAXIMUM RATINGS AND ELECTRICAL CHARACTERISTICS

Rating 25°C ambient temperature unless otherwise specified.

PARAMETERS	SYMBOL	TEST CONDITIONS	MIN	TYP	MAX	UNITS
Forward voltage	$V_F$	$I_F=1\text{mA}$	-	-	0.37	V
Reverse current	$I_R$	$V_R=10\text{V}$	-	-	1	$\mu\text{A}$
Capacitance between terminals	$C_T$	$V_R=1\text{V}, f=1\text{MHz}$	-	2	-	pF

**RATINGS AND CHARACTERISTIC CURVES**

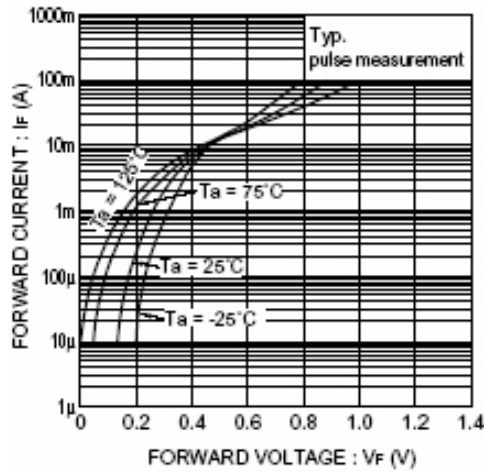


Fig. 1 Forward characteristics

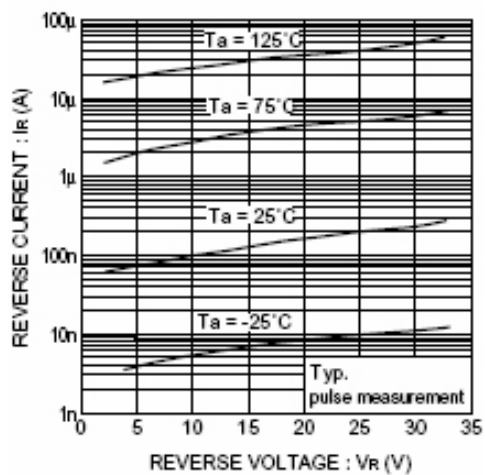


Fig. 2 Reverse characteristics

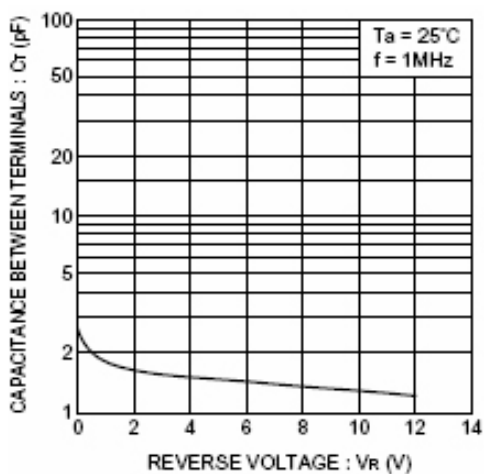


Fig. 3 Capacitance between terminals characteristics