

PART
NAME

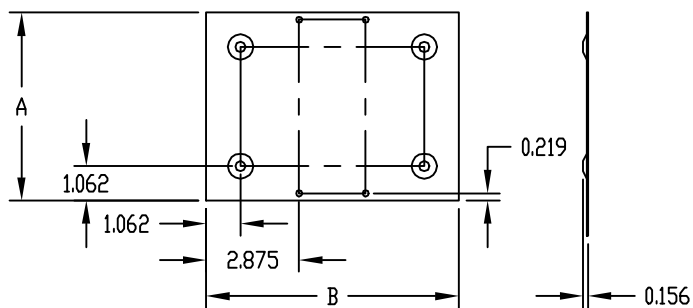
CHASSIS BOTTOM PLATES

PART
No.

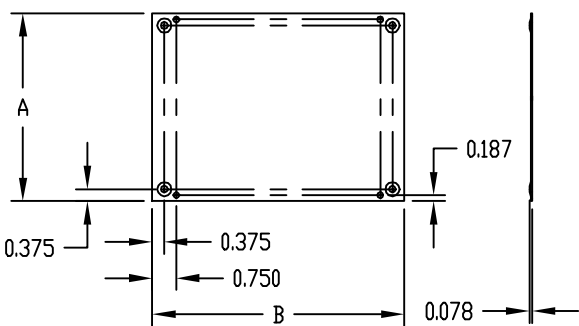
BPA-1502 THRU BPA-1598



TYPE A



TYPE B



TYPE C

TYPE A AND TYPE B

(4) EMBOSSED FEET 0.781 DIA.

TYPE C

(4) EMBOSSED FEET 0.437 DIA.

MOUNTING HOLES 0.187 DIA.

MATERIAL:

"BPA" PREFIX 0.040 ALUMINUM

FINISH:

NATURAL

| PART No. ALUMINUM NATURAL FINISH | A | B | TYPE | WGT. IN OZS. |
|--|--------|--------|------|-----------------|
| BPA-1502 | 3.375 | 4.375 | C | 1 |
| BPA-1504 | 3.875 | 4.875 | C | 2 |
| BPA-1505 | 3.875 | 5.875 | C | 2 |
| BPA-1507 | 4.375 | 7.875 | C | 3 |
| BPA-1513 | 5.812 | 7.812 | A | 3 |
| BPA-1514 | 5.812 | 13.812 | B | 5 |
| BPA-1515 | 5.812 | 16.812 | B | 6 |
| BPA-1516 | 6.812 | 14.812 | B | 8 |
| BPA-1517 | 6.812 | 16.812 | B | 8 |
| BPA-1518 | 7.812 | 9.812 | B | 4 |
| BPA-1519 | 7.812 | 11.812 | B | 6 |
| BPA-1520 | 7.812 | 16.812 | B | 8 |
| BPA-1522 | 8.812 | 14.812 | B | 8 |
| BPA-1523 | 9.812 | 11.812 | B | 8 |
| BPA-1524 | 9.812 | 13.812 | B | 8 |
| BPA-1527 | 11.812 | 11.812 | A | 10 |
| BPA-1528 | 11.812 | 16.812 | B | 12 |
| BPA-1529 | 13.812 | 16.812 | B | 15 |
| BPA-1530 | 14.812 | 16.812 | A | 16 |
| BPA-1531 | 16.812 | 16.812 | A | 17 |
| BPA-1589 | 4.812 | 6.812 | A | 2 |
| BPA-1590 | 4.875 | 9.375 | C | 2 |
| BPA-1591 | 4.812 | 9.812 | A | 4 |
| BPA-1592 | 6.812 | 6.812 | A | 3 |
| BPA-1593 | 6.812 | 8.812 | A | 4 |
| BPA-1594 | 6.812 | 10.812 | B | 4 |
| BPA-1595 | 6.812 | 11.812 | B | 5 |
| BPA-1596 | 6.812 | 12.812 | B | 8 |
| BPA-1597 | 9.812 | 16.812 | B | 10 |
| BPA-1598 | 12.812 | 16.812 | B | 14 |