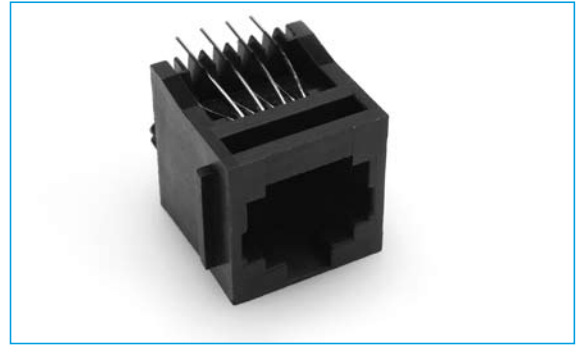


NETWORKING SOCKETS

- 4 - 8 ways available
- Selective loading of contacts
- Board solderable
- Competitively priced.

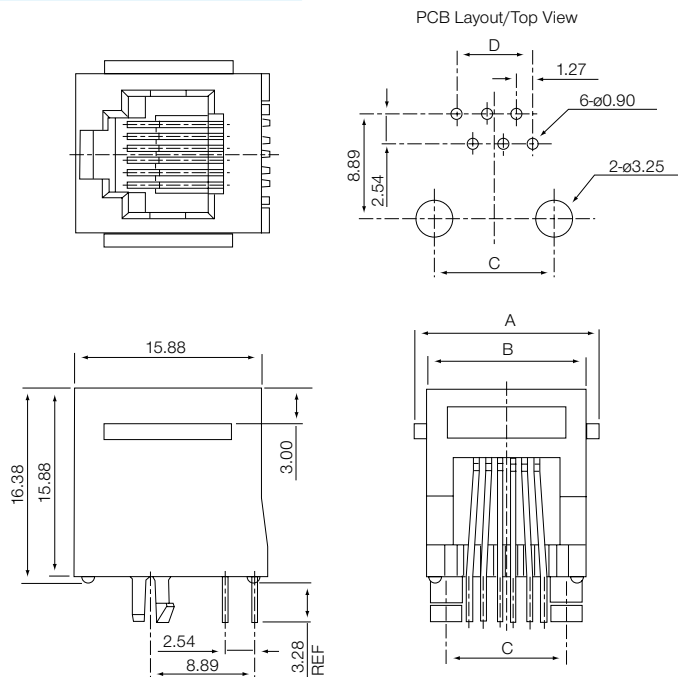
TOP ENTRY PCB JACK



SPECIFICATION

Current Rating	3A
Contact Resistance	30mΩ max at DC 100mA
Dielectric withstanding Voltage	AC 500V for 1 minute
Insulation Resistance	1000mΩ min at DC 500V
Plating	Selective gold plating over Nickel Tin plate on solder foils
Housing	UL94V0 Standard
Colour	Black
Contact	0.35mm Phosphor bronze
Operating Temperature	-55°C to +105°C

OUTLINE DRAWING



No of Positions	Dimensions			
	A	B	C	D
4	13.97	11.43	7.62	3.81
6	15.75	13.46	10.16	6.35
8	17.65	15.36	11.43	8.89

ORDERING INFORMATION

DBC	RJ	S	86	F
Dubilier Connectors	Series	Contact Type S = Socket	No. of Ways x No. of loaded contacts 4 x 4 6 x 4 6 x 6 8 x 6 8 x 8	Style F = Top Entry PCB Jack