

# SPST RF SWITCH

## MODEL TWP2209

Package: 8 Lead Flatpack (FP7)  
Also Available In: Connectorized Housings

### Features

- DC - 3.0 GHz
- RF2 Terminated in "OFF" Position
- Fast Switching Speed: 10 ns Typical
- OperatingTemp. -55 °C to + 85 °C
- Environmental Screening Available

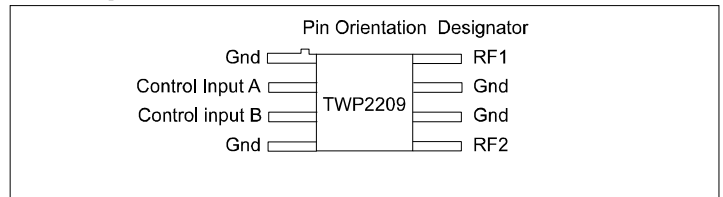
### Maximum Ratings

Ambient Operating Temperature ..... -55°C to + 100 °C  
Storage Temperature ..... -65°C to + 125 °C  
Case Temperature ..... + 125 °C  
DC Voltage ..... -8.5 Volts  
Continuous RF Input Power ..... +30 dBm

### Specifications

CHARACTERISTIC	TYPICAL Ta = 25 °C	MIN/MAX Ta = -55 °C to +85 °C
Frequency	DC - 3.0 GHz	DC - 3.0 GHz
Insertion Loss (dB)	1.0	1.5 Max.
Isolation (dB)	≥32	30 Min.
VSWR	In <1.25:1 Out <1.25:1	1.6:1 Max. 1.5:1 Max.
Control Input High	Vdc -5.0 to -8.0 mA 0.150	-8.0 Max. 0.500 Max.
Control Input Low	Vdc 0 to -0.2 mA 0.010	0 Max. 0.030 Max.
Switching Speed (ns)	10	10 Max.

### Pin Layout

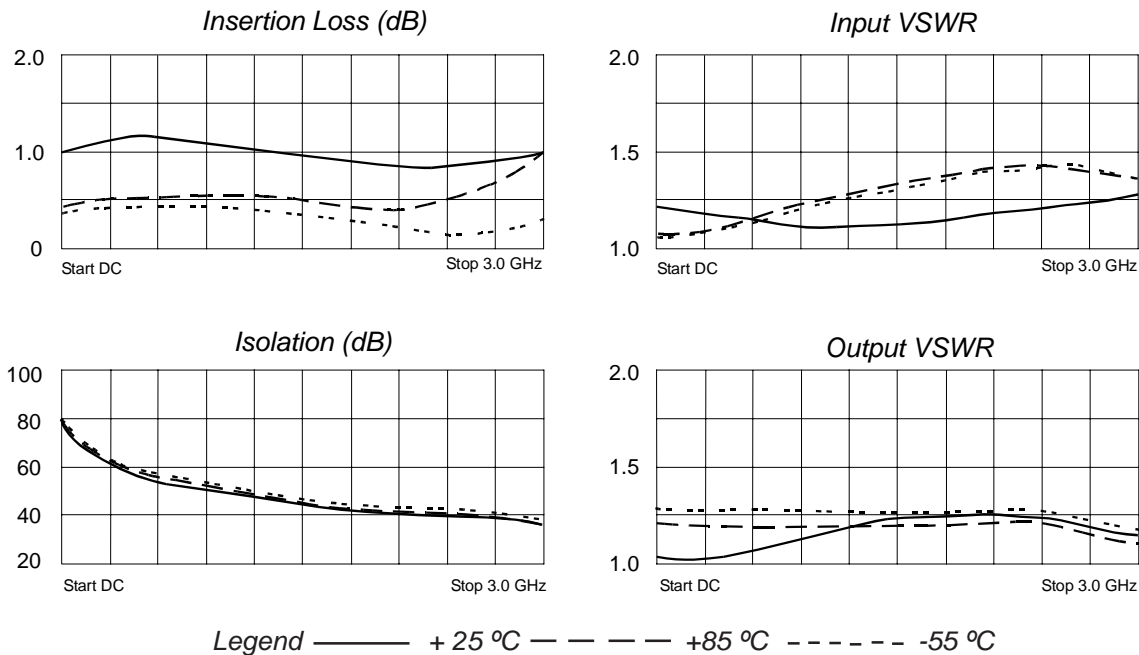


### Truth Table

Control Input		Switch Position
A	B	RF1 to RF2
High	Low	ON
Low	High	OFF

Note: Care should always be taken to effectively ground the case of each unit.

### Typical Performance Data



Spectrum Microwave · 2144 Franklin Drive N.E. · Palm Bay, Florida 32905 · PH (888) 553-7531 · Fax (888) 553-7532 Rev. 3/28/08

www.SpectrumMicrowave.com Spectrum Microwave · 2707 Black Lake Place · Philadelphia, Pennsylvania 19154 · PH (215) 464-4000 · Fax (215) 464-4001