



Data Sheet



Product Category: IF SAW Filter

Part Number
820-IF70.0M-D

Package
20.2 x 12.6 Thru Hole

Application
Base Station & Repeater

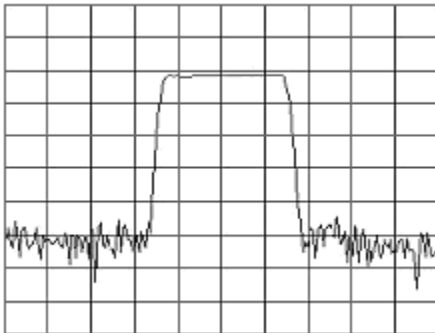
Last Modified
May 02 2003

TYPE :

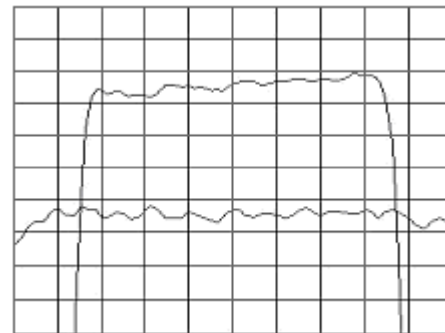
70.0 MHz Bandpass Filter
5.5 MHz Bandwidth

PART NUMBER :

820-IF70.0M-D



Horizontal : 2.0 MHz/Div
Vertical : 10 dB/Div



Horizontal : 0.8 MHz/Div
Vertical : 1 dB/Div
Vertical : 100 ns/Div

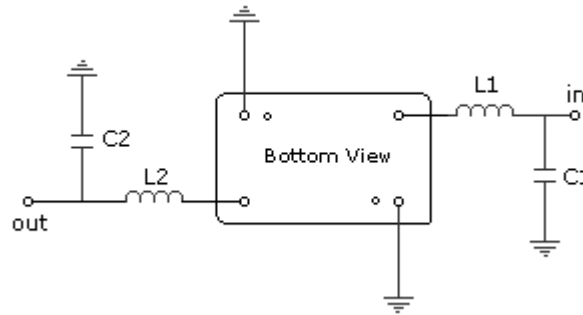
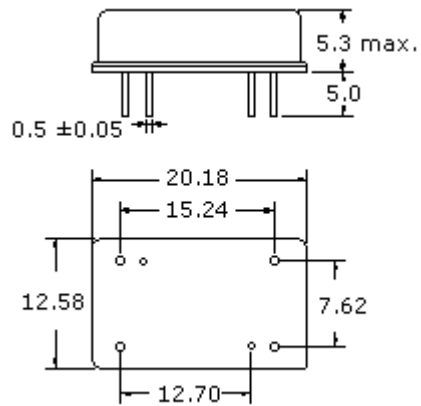
OPERATING CONDITIONS / ELECTRICAL CHARACTERISTICS

| PARAMETERS | Minimum | Typical | Maximum | Units |
|------------------------------|---------|---------|---------|-------|
| Center Frequency | 69.94 | 70.00 | 70.06 | MHz |
| Insertion Loss | - | 20.5 | 23.0 | dB |
| 1dB Bandwidth | 5.3 | 5.5 | - | MHz |
| 3dB Bandwidth | 5.5 | 5.7 | - | MHz |
| 40dB Bandwidth | - | 6.6 | 6.9 | MHz |
| Passband Ripple | - | 0.9 | 1.2 | dB |
| Group Delay Variation | - | 150 | 200 | nsec |
| Absolute Delay | - | 2.38 | - | µsec |
| Ultimate Rejection | 50 | 55 | - | dB |
| Substrate Material | - | 112 LT | - | - |
| Ambient Temperature | - | 25 | - | °C |

* Custom SAW IF Filters available. Contact Oscilent for assistance.

PACKAGE OUTLINE (mm)

TEST FIXTURE



L1 = 82nH C1 = 130pF

L2 = (120+80)nH C2 = 91pF

Source/Load Impedance = 50 ohms

* PKG Ground can be used for better spurious levels

Oscilent Corporation - CALL **949.252.0522**

Part No.: 820-IF70.0M-D

17962 Sky Park Circle, Building D, Irvine, CA 92614, USA
 Fax: 949.252.0599, E-Mail: Sales@Oscilent.com

Crystal Oscillators | Quartz Crystal | TCXO | VCXO | IF SAW Filter | RF SAW Filter | Ceramic Resonator
 Crystal Filter | Ceramic Filter | SAW Filter / SAW Devices | Site Map