

RoHS Compliant Product

## Description

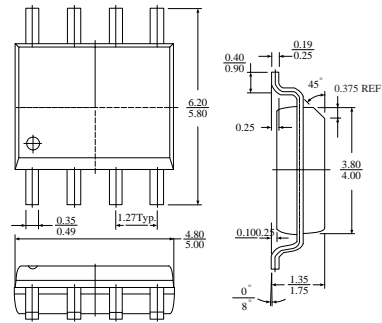
The SSG6680 provide the designer with the best combination of fast switching, ruggedized device design, low on-resistance and cost-effectiveness.

The SOP-8 is universally preferred for all commercial industrial surface mount application and suited for low voltage applications such as DC/DC converters.

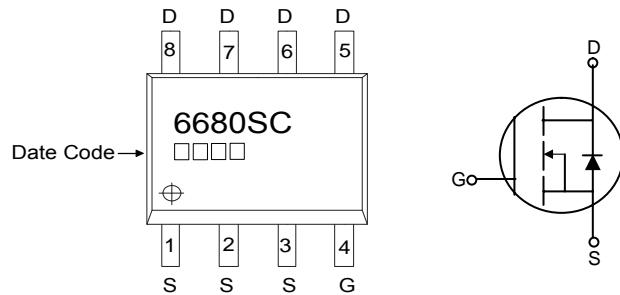
## Features

- \* Surface Mount Package
- \* High V<sub>GS</sub> Max. Rating Voltage
- \* Low On-Resistance

SOP-8



Dimensions in millimeters



## Absolute Maximum Ratings

Parameter	Symbol	Ratings	Unit
Drain-Source Voltage	V <sub>DS</sub>	30	V
Gate-Source Voltage	V <sub>GS</sub>	±25	V
Continuous Drain Current <sup>3</sup>	I <sub>D</sub> @T <sub>A</sub> =25 °C	11.5	A
Continuous Drain Current <sup>3</sup>	I <sub>D</sub> @T <sub>A</sub> =70 °C	9.5	A
Pulsed Drain Current <sup>1</sup>	I <sub>DM</sub>	50	A
Total Power Dissipation	P <sub>D</sub> @T <sub>A</sub> =25 °C	2.5	W
Linear Derating Factor		0.02	W/°C
Operating Junction and Storage Temperature Range	T <sub>J</sub> , T <sub>stg</sub>	-55~+150	°C

## Thermal Data

Parameter	Symbol	Ratings	Unit
Thermal Resistance Junction-ambient <sup>3</sup> Max.	R <sub>thj-a</sub>	50	°C/W

**Electrical Characteristics( T<sub>j</sub>=25°C Unless otherwise specified)**

Parameter	Symbol	Min.	Typ.	Max.	Unit	Test Condition
Drain-Source Breakdown Voltage	BV <sub>DSS</sub>	30	-	-	V	V <sub>GS</sub> =0V, I <sub>D</sub> =250uA
Breakdown Voltage Temp. Coefficient	ΔBV <sub>Ds</sub> /ΔT <sub>j</sub>	-	0.02	-	V/°C	Reference to 25°C, I <sub>D</sub> =1mA
Gate Threshold Voltage	V <sub>GS(th)</sub>	1.0	-	3.0	V	V <sub>DS</sub> =V <sub>GS</sub> , I <sub>D</sub> =250uA
Gate-Source Leakage Current	I <sub>GSS</sub>	-	-	±100	nA	V <sub>GS</sub> =±25A
Drain-Source Leakage Current (T <sub>j</sub> =25°C)	I <sub>DSS</sub>	-	-	1	uA	V <sub>DS</sub> =30V, V <sub>GS</sub> =0
Drain-Source Leakage Current (T <sub>j</sub> =70°C)		-	-	25	uA	V <sub>DS</sub> =24V, V <sub>GS</sub> =0
Static Drain-Source On-Resistance <sup>2</sup>	R <sub>DS(ON)</sub>	-	-	11	mΩ	V <sub>GS</sub> =10V, I <sub>D</sub> =11.5A
		-	-	18		V <sub>GS</sub> =4.5V, I <sub>D</sub> =9.5A
Total Gate Charge <sup>2</sup>	Q <sub>g</sub>	-	16.8	-	nC	I <sub>D</sub> =11.5A V <sub>DS</sub> =15V V <sub>GS</sub> =5V
Gate-Source Charge	Q <sub>gs</sub>	-	4.2	-		
Gate-Drain ("Miller") Charge	Q <sub>gd</sub>	-	8	-		
Turn-on Delay Time <sup>2</sup>	T <sub>d(ON)</sub>	-	8.9	-	nS	V <sub>DD</sub> =15V I <sub>D</sub> =1A V <sub>GS</sub> =10V R <sub>G</sub> =5.5Ω R <sub>D</sub> =10Ω
Rise Time	T <sub>r</sub>	-	7.3	-		
Turn-off Delay Time	T <sub>d(Off)</sub>	-	25.6	-		
Fall Time	T <sub>f</sub>	-	18.6	-		
Input Capacitance	C <sub>iss</sub>	-	1450	-	pF	V <sub>GS</sub> =0V V <sub>DS</sub> =25V f=1.0MHz
Output Capacitance	C <sub>oss</sub>	-	285	-		
Reverse Transfer Capacitance	C <sub>rss</sub>	-	180	-		
Forward Transconductance	G <sub>fs</sub>	-	30	-	S	V <sub>DS</sub> =15V, I <sub>D</sub> =11.5A

**Source-Drain Diode**

Parameter	Symbol	Min.	Typ.	Max.	Unit	Test Condition
Forward On Voltage <sup>2</sup>	V <sub>DS</sub>	-	-	1.3	V	I <sub>S</sub> =3.5A, V <sub>GS</sub> =0V, T <sub>j</sub> =25°C
Continuous Source Current (Body Diode)	I <sub>S</sub>	-	-	1.92	A	V <sub>D</sub> =V <sub>G</sub> =0V, V <sub>S</sub> =1.3V

Notes: 1.Pulse width limited by Max. junction temperature

2.Pulse width ≤300us, dutycycle≤2%.

3.Surface mounted on 1 inch<sup>2</sup> copper pad of FR4 board; 125°C/W when mounted on min. copper pad.

### Characteristics Curve

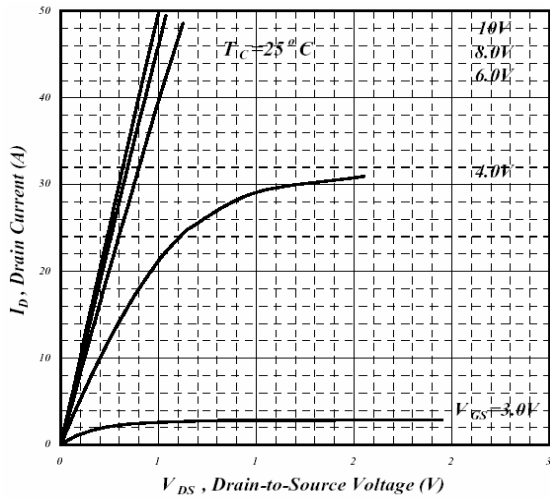


Fig 1. Typical Output Characteristics

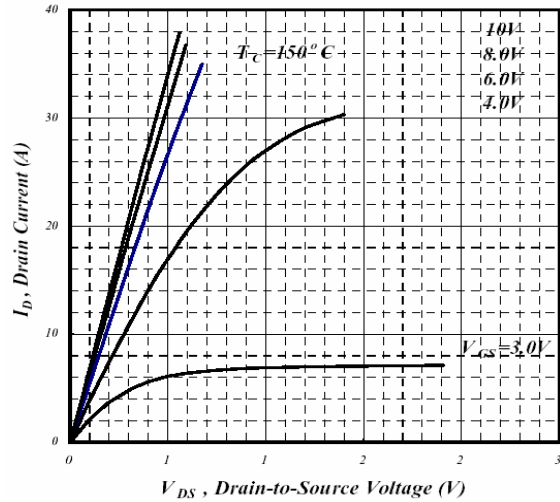


Fig 2. Typical Output Characteristics

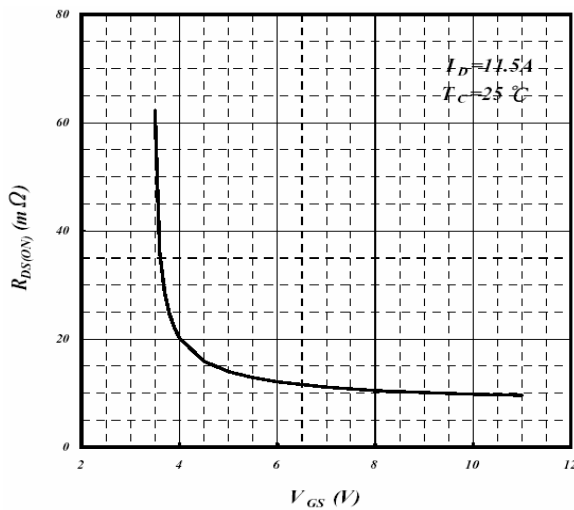


Fig 3. On-Resistance v.s. Gate Voltage

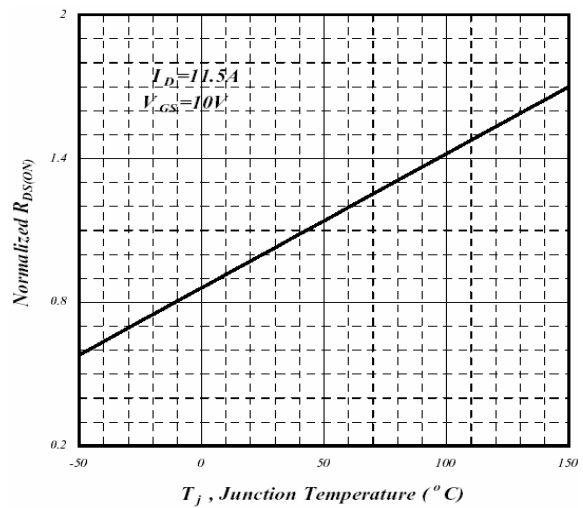


Fig 4. Normalized On-Resistance v.s. Junction Temperature

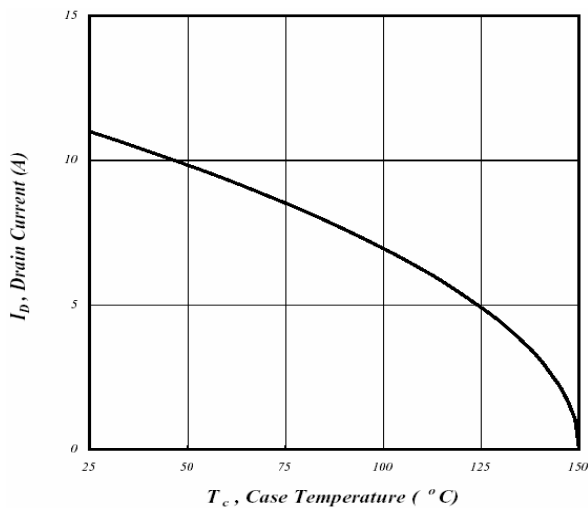


Fig 5. Maximum Drain Current v.s. Case Temperature

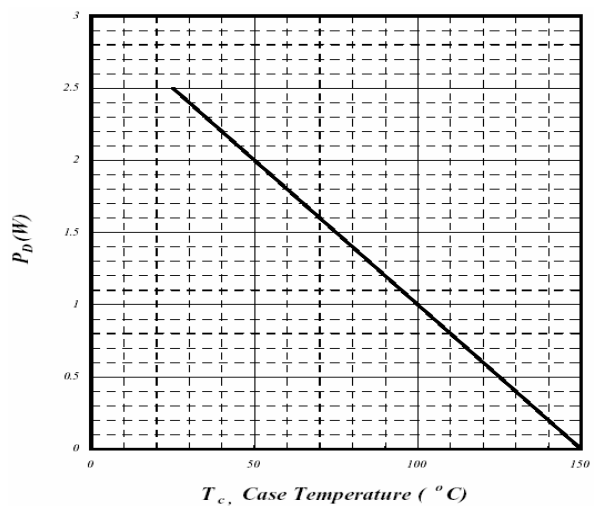


Fig 6. Type Power Dissipation

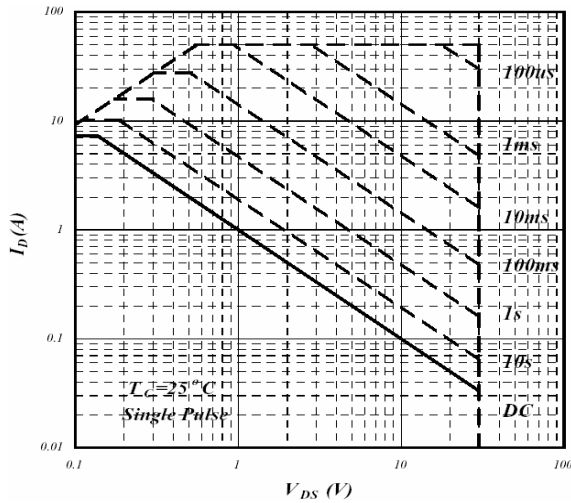


Fig 7. Maximum Safe Operating Area

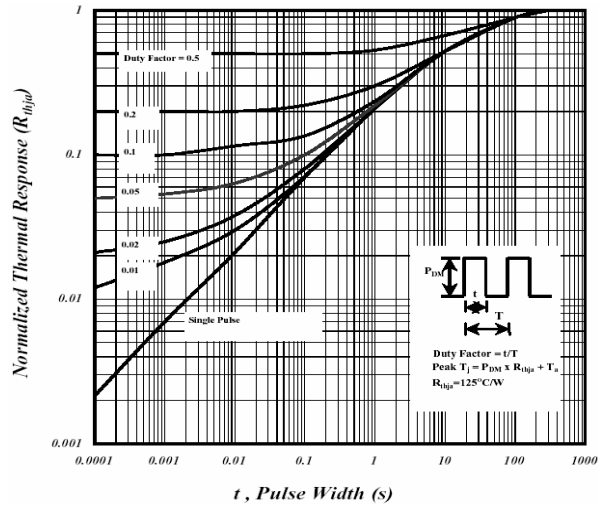


Fig 8. Effective Transient Thermal Impedance

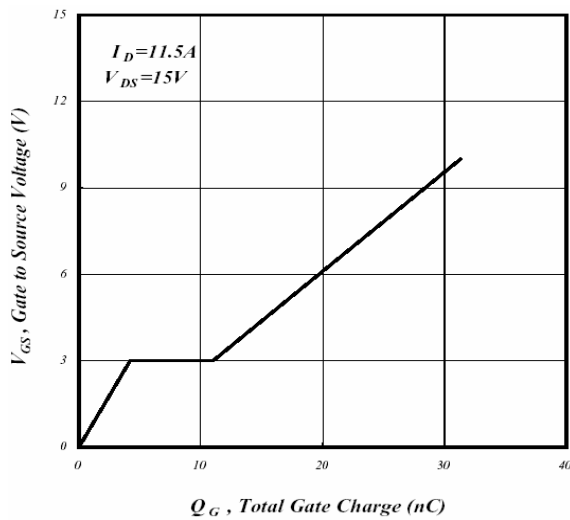


Fig 9. Gate Charge Characteristics

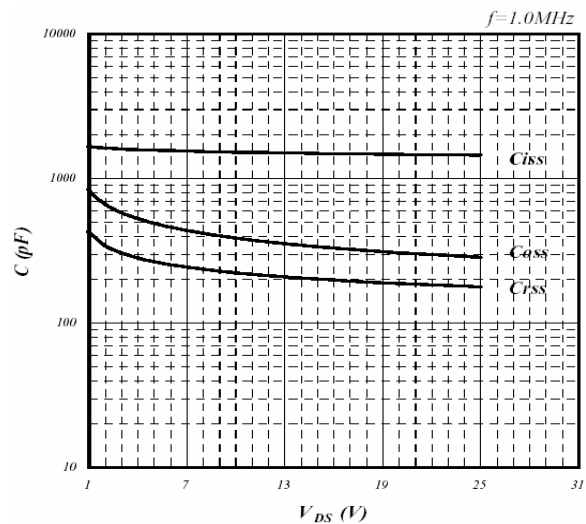


Fig 10. Typical Capacitance Characteristics

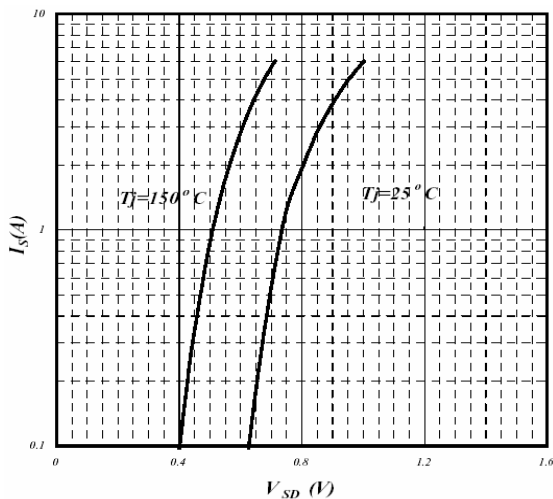


Fig 11. Forward Characteristics of Reverse Diode

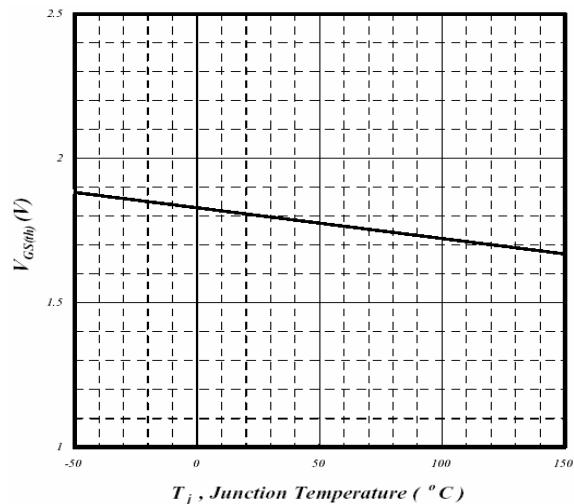
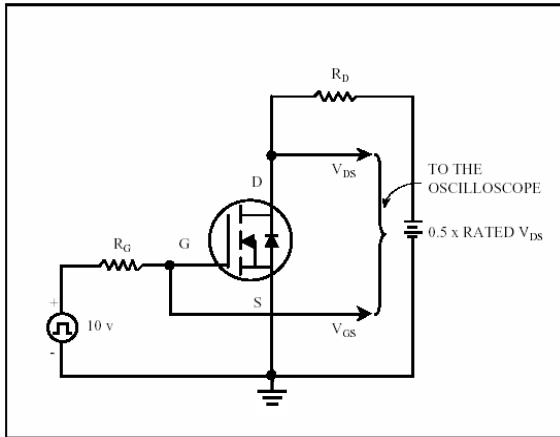
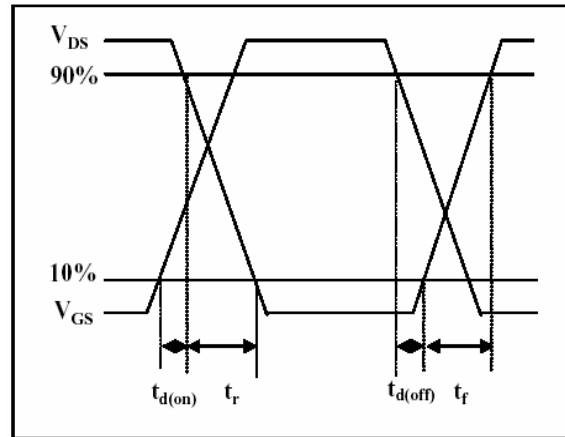


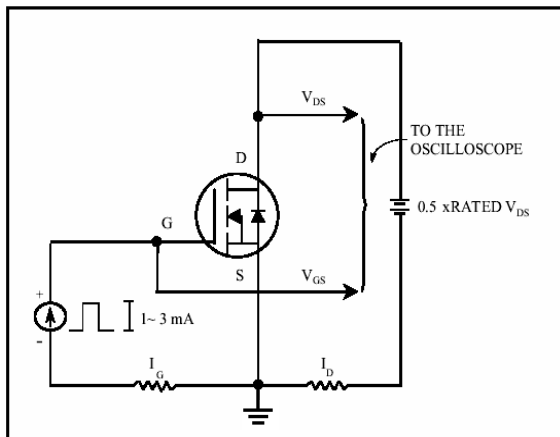
Fig 12. Gate Threshold Voltage v.s. Junction Temperature



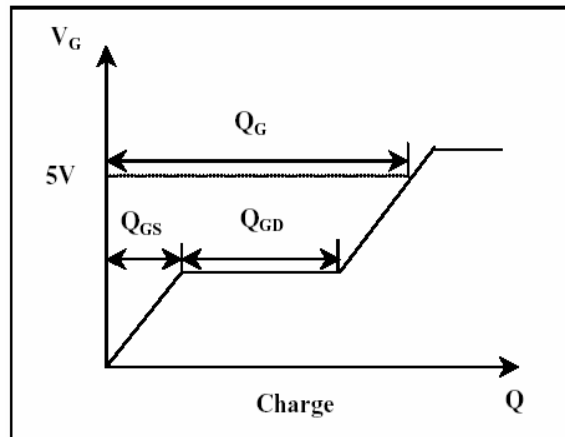
**Fig 13. Switching Time Circuit**



**Fig 14. Switching Time Waveform**



**Fig 15. Gate Charge Circuit**



**Fig 16. Gate Charge Waveform**