

PLEASE CHECK WWW.MOLEX.COM FOR LATEST PART INFORMATION

Part Number: [0908140224](#)
Status: **Active**
Overview: [picoflex](#)
Description: 1.27mm (.050") Pitch Picoflex® PF-50 Header, Vertical, Low Profile, Surface Mount, 24 Circuits, Glow Wire Compatible

Documents:

[3D Model](#) [Product Specification PS-99020-0011 \(PDF\)](#)
[Drawing \(PDF\)](#) [RoHS Certificate of Compliance \(PDF\)](#)

Agency Certification

UL E29179

General

Product Family PCB Headers
 Series [90814](#)
 Application Wire-to-Board
 Application Tooling Part Link 690081070
 Comments Low Profile SMT
 Overview [picoflex](#)
 Product Name Picoflex®

Physical

Breakaway No
 Circuits (Loaded) 24
 Color - Resin Black, Natural
 Durability (mating cycles max) 30
 First Mate / Last Break No
 Flammability 94V-0
 Glow-Wire Compliant Yes
 Guide to Mating Part No
 Keying to Mating Part None
 Lock to Mating Part Yes
 Material - Metal Brass
 Material - Plating Mating Tin
 Material - Resin High Temperature Thermoplastic
 Number of Rows 1
 Orientation Vertical
 PCB Locator Yes
 PCB Retention Yes
 PCB Thickness Recommended (in) 0.062 In
 PCB Thickness Recommended (mm) 1.60 mm
 Packaging Type Tube
 Pitch - Mating Interface (in) 0.050 In
 Pitch - Mating Interface (mm) 1.27 mm
 Plating min: Mating (µin) 120
 Plating min: Mating (µm) 3
 Plating min: Termination (µin) 120
 Plating min: Termination (µm) 3
 Polarized to Mating Part Yes
 Polarized to PCB Yes
 Shrouded No
 Stackable No
 Surface Mount Compatible (SMC) N/A
 Temperature Range - Operating -40°C to +105°C
 Termination Interface: Style Surface Mount



Series

image - Reference only

EU RoHS

ELV and RoHS Compliant

REACH SVHC

Contains SVHC: No

Halogen-Free

Status

Not Reviewed

China RoHS



Need more information on product environmental compliance?

Email productcompliance@molex.com
 For a multiple part number RoHS Certificate of Compliance, [click here](#)

Please visit the [Contact Us](#) section for any non-product compliance questions.

Search Parts in this Series

[90814Series](#)

Mates With

[90327 IDT Connector](#)

Application Tooling | FAQ

Tooling specifications and manuals are found by selecting the products below. Crimp Height Specifications are then contained in the Application Tooling Specification document.

Global

Description	Product #
Extraction Tool (Plastic) for 90327 Connector, 4-26 Circuit	0690081070

Electrical

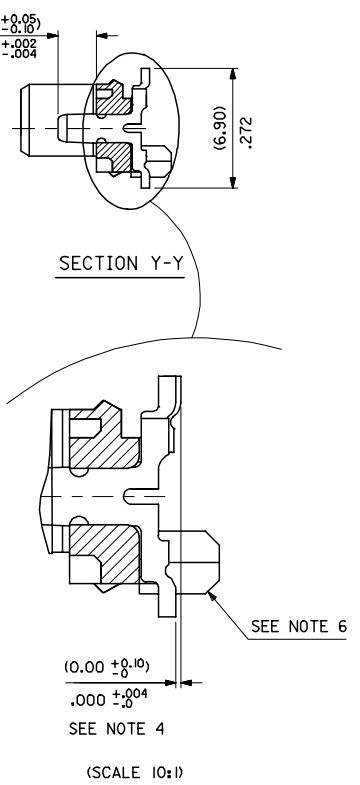
Current - Maximum per Contact	1.2A
Voltage - Maximum	250V

Material Info**Reference - Drawing Numbers**

Packaging Specification	SDA-90814-9001
Product Specification	PS-99020-0011
Sales Drawing	SDA-90814

This document was generated on 06/08/2010

PLEASE CHECK WWW.MOLEX.COM FOR LATEST PART INFORMATION



CIRCUIT SIZE

	PCB PEGS	TUBE PACKED	TAPE & REEL PACKED	POLARIZING PEG HEIGHT DIM. E
0	YES	YES	NO	(6.40)/ .252
2	YES	NO	YES	(6.40)/ .252
3	NO	YES	NO	(6.40)/ .252
5	NO	NO	YES	(6.40)/ .252
6	NO	YES	NO	(4.10)/ .161
7	NO	NO	YES	(4.10)/ .161
8	YES	YES	NO	(4.10)/ .161
9	YES	NO	YES	(4.10)/ .161

0= (3-5UM)/120-200UM TIN VERSION
 3= (0.76UM)/30UM GOLD VERSION

90814-##34	34	(46.96)/1.849	(41.91)/1.650	(45.76)/1.802	10	NO
90814-##26	26	(36.80)/1.449	(31.75)/1.250	(35.60)/1.402	14	YES
90814-##24	24	(34.26)/1.349	(29.21)/1.150	(33.06)/1.302	15	YES
90814-##22	22	(31.72)/1.249	(26.67)/1.050	(30.52)/1.202	16	YES
90814-##20	20	(29.18)/1.149	(24.13)/ .950	(27.98)/1.102	18	YES
90814-##18	18	(26.64)/1.049	(21.59)/ .850	(25.44)/1.002	20	YES
90814-##16	16	(24.10)/ .949	(19.05)/ .750	(22.90)/ .902	22	YES
90814-##14	14	(21.56)/ .849	(16.51)/ .650	(20.36)/ .802	25	YES
90814-##12	12	(19.02)/ .749	(13.97)/ .550	(17.82)/ .702	28	YES
90814-##10	10	(16.48)/ .649	(11.43)/ .450	(15.28)/ .602	32	YES
90814-##08	8	(13.94)/ .549	(8.89)/ .350	(12.74)/ .502	38	YES
90814-##06	6	(11.40)/ .449	(6.35)/ .250	(10.20)/ .402	46	YES
90814-##04	4	(8.86)/ .349	(3.81)/ .150	(7.66)/ .302	60	YES
PART NO.	NUMBER OF CKTS	DIMN. A	DIMN. B	DIMN. C	QUANTITY OF PARTS PER TUBE (-#0#/-#3#/-#6# & -#8# VERSIONS)	TOOLED

- NOTES:
- MATERIAL: HOUSING: NYLON 4/6 30% G.F., UL 94 V-0, NATURAL (BEIGE)
 TERMINAL- CARTRIDGE BRASS (0.28)/0.11 REF THICK
 - PLATING:
 TIN: TIN (3-5UM)/120um-200um OVER (1.27um)/5um MIN NICKEL.
 GOLD: (0.76UM)/30UM SELECTIVE GOLD AND (0.10-0.20UM)/4UM-8UM GOLD FLASH OVER (1.27UM)/50UM NICKEL UNDERCOAT
 - MATES WITH MOLEX 90327 PART SERIES
 - ALL SMT TAILS TO LIE WITHIN A COPLANARITY BAND OF (0.0)/.0 - (0.10)/.004 REF. FROM EACH OTHER.
 - FOR TAPE & REEL PACKAGING DETAILS SEE SDA-90814-9001
 - PCB PEGS ARE OPTIONAL
 - PCB LAYOUT SHOWN ON SHEET 2

REDUCED CO-PL TOL
 EC NO: E2007-0304
 DRAWN: IDEMNEY 2006/11/07
 CHKD: DMORLARTY 2006/11/07
 APPR: IDEMNEY 2006/11/13

QUALITY SYMBOLS
 ▽=0
 ▽=0

GENERAL TOLERANCES (UNLESS SPECIFIED)

	mm	INCH
4 PLACES	± ---	± ---
3 PLACES	± ---	± .004
2 PLACES	± 0.10	± ---
1 PLACE	± ---	± ---

 ANGULAR ±1/2°

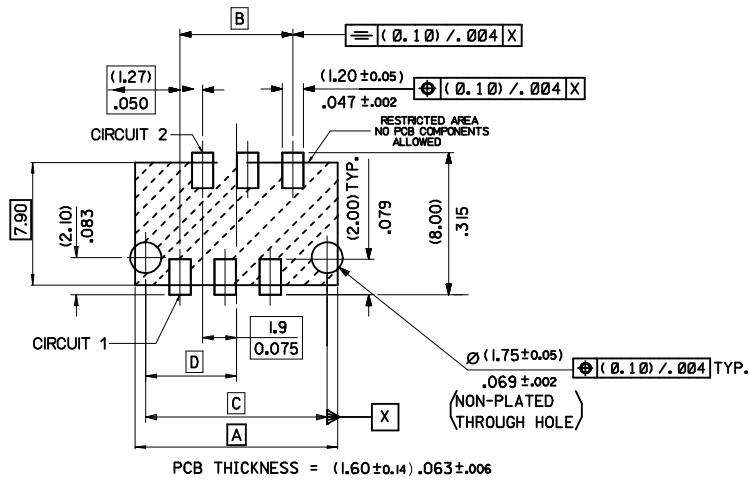
DIMENSION STYLE: MM/IN
 SCALE: 5:1
 DESIGN UNITS: METRIC
 THIRD ANGLE PROJECTION

DRAWN BY: DMCNAMAR DATE: 2001/08/16
 CHECKED BY: PCURTIN DATE: 2001/08/16
 APPROVED BY: MWILHITE DATE: 2001/08/16

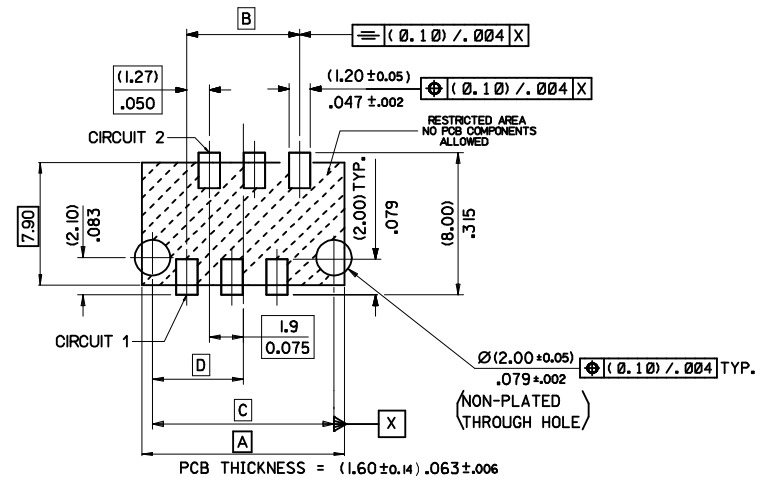
MATERIAL NO.:
 DOCUMENT NO.: SDA-90814
 SHEET NO.: 1 OF 2

DRAFT WHERE APPLICABLE MUST REMAIN WITHIN DIMENSIONS
 SEE CHART
 THIS DRAWING CONTAINS INFORMATION THAT IS PROPRIETARY TO MOLEX INCORPORATED AND SHOULD NOT BE USED WITHOUT WRITTEN PERMISSION

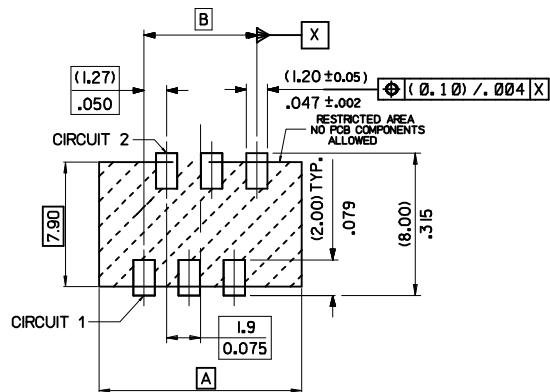
PICOFLEX SMT HEADER
 MOLEX INCORPORATED



PCB LAYOUT FOR TRANSITION FIT WITH PCB PEGS
 HEADER VERSIONS 90814-0**/-*2**/-*8**/-*9**,
 VIEWED FROM COMPONENT SIDE



PCB LAYOUT FOR CLEARANCE FIT WITH PCB PEGS
 HEADER VERSIONS 90814-0**/-*2**/-*8**/-*9**,
 VIEWED FROM COMPONENT SIDE



PCB THICKNESS = (1.60 +/-0.14) .063 +/-0.006

PCB LAYOUT FOR HEADERS WITHOUT PCB PEGS
 HEADER VERSIONS 90814-3**/-*5**/-*6**/-*7**,
 VIEWED FROM COMPONENT SIDE

90814-***	NUMBER OF CKTS	DIMN. A	DIMN. B	DIMN. C	DIMN. D
90814-***34	34	(46.96)/1.849	(41.91)/1.650	(45.76)/1.802	(22.88)/.901
90814-***26	26	(36.80)/1.449	(31.75)/1.250	(35.60)/1.402	(17.80)/.701
90814-***24	24	(34.26)/1.349	(29.21)/1.150	(33.06)/1.302	(16.53)/.651
90814-***22	22	(31.72)/1.249	(26.67)/1.050	(30.52)/1.202	(15.26)/.601
90814-***20	20	(29.18)/1.149	(24.13)/.950	(27.98)/1.102	(13.99)/.551
90814-***18	18	(26.64)/1.049	(21.59)/.850	(25.44)/1.002	(12.72)/.501
90814-***16	16	(24.10)/.949	(19.05)/.750	(22.90)/.902	(11.45)/.451
90814-***14	14	(21.56)/.849	(16.51)/.650	(20.36)/.802	(10.18)/.401
90814-***12	12	(19.02)/.749	(13.97)/.550	(17.82)/.702	(8.91)/.351
90814-***10	10	(16.48)/.649	(11.43)/.450	(15.28)/.602	(7.64)/.301
90814-***08	8	(13.94)/.549	(8.89)/.350	(12.74)/.502	(6.37)/.251
90814-***06	6	(11.40)/.449	(6.35)/.250	(10.20)/.402	(5.10)/.201
90814-***04	4	(8.86)/.349	(3.81)/.150	(7.66)/.302	(3.83)/.151
PART NO.	NUMBER OF CKTS	DIMN. A	DIMN. B	DIMN. C	DIMN. D

ADDED PART FOOTPRINT EC NO: E2009-0235 DRAWN BY: BYRNES 2008/11/07 CHKD: 2008/11/10 APPR: WALLACE 2008/11/10	QUALITY SYMBOLS ▽=0 ▽=0	GENERAL TOLERANCES (UNLESS SPECIFIED) <table border="1"> <tr> <th></th> <th>mm</th> <th>INCH</th> </tr> <tr> <td>4 PLACES ±</td> <td>---</td> <td>---</td> </tr> <tr> <td>3 PLACES ±</td> <td>---</td> <td>---</td> </tr> <tr> <td>2 PLACES ±</td> <td>0.10</td> <td>---</td> </tr> <tr> <td>1 PLACE ±</td> <td>0.2</td> <td>---</td> </tr> </table>		mm	INCH	4 PLACES ±	---	---	3 PLACES ±	---	---	2 PLACES ±	0.10	---	1 PLACE ±	0.2	---	DIMENSION STYLE MM ONLY	SCALE 5:1	DESIGN UNITS METRIC	THIRD ANGLE PROJECTION
		mm	INCH																		
	4 PLACES ±	---	---																		
	3 PLACES ±	---	---																		
2 PLACES ±	0.10	---																			
1 PLACE ±	0.2	---																			
DRAWN BY: DMCNAMAR DATE: 2001/08/23 CHECKED BY: BMAGUIRE DATE: 2001/08/23 APPROVED BY: MWILHITE DATE: 2001/08/23	PICOFLEX SMT HEADER																				
MATERIAL NO.	MOLEX INCORPORATED																				
SEE CHART	DOCUMENT NO. SDA-90814																				

THIS DRAWING CONTAINS INFORMATION THAT IS PROPRIETARY TO MOLEX INCORPORATED AND SHOULD NOT BE USED WITHOUT WRITTEN PERMISSION