

**PLEASE CHECK WWW.MOLEX.COM FOR LATEST PART INFORMATION**

**Part Number:** [1300970274](#)  
**Status:** **Active**  
**Overview:** [brad wire mesh grips](#)  
**Description:** Strain Relief Wide Range Dust Tight Grip, 2 1/2" NPT, Straight Female, Cable Diameter

**Documents:**

[Drawing \(PDF\)](#) [RoHS Certificate of Compliance \(PDF\)](#)

**Agency Certification**

CSA LR32159

**General**

Product Family Cable Grips  
 Series [130097](#)  
 Eye Type N/A  
 Insulated Yes  
 O-Ring No  
 Overview [brad wire mesh grips](#)  
 Product Name Dust-Tight  
 Type Strain Relief Grips  
 Woodhead Yes

**Physical**

Approximate Break Strength 1,000 lbs  
 Bale Length N/A  
 Body Style Straight  
 Cable Diameter 50.80-62.23mm (2.000-2.450")  
 Color - Grommet N/A  
 Gender Female  
 Material - Body Nylon  
 Material - Grip Nylon  
 Mesh Length 0.431m (1.41' )  
 Number of Holes N/A  
 Strain Relief Force 35 lbs  
 Thread Size 2 1/2" NPT

**Material Info**

Old Part Number 36519

**Reference - Drawing Numbers**

Sales Drawing SD-130097-002



*image - Reference only*

**EU RoHS**

**ELV and RoHS  
Compliant**  
**REACH SVHC  
Not Reviewed**  
**Halogen-Free  
Status  
Not Reviewed**

**China RoHS**



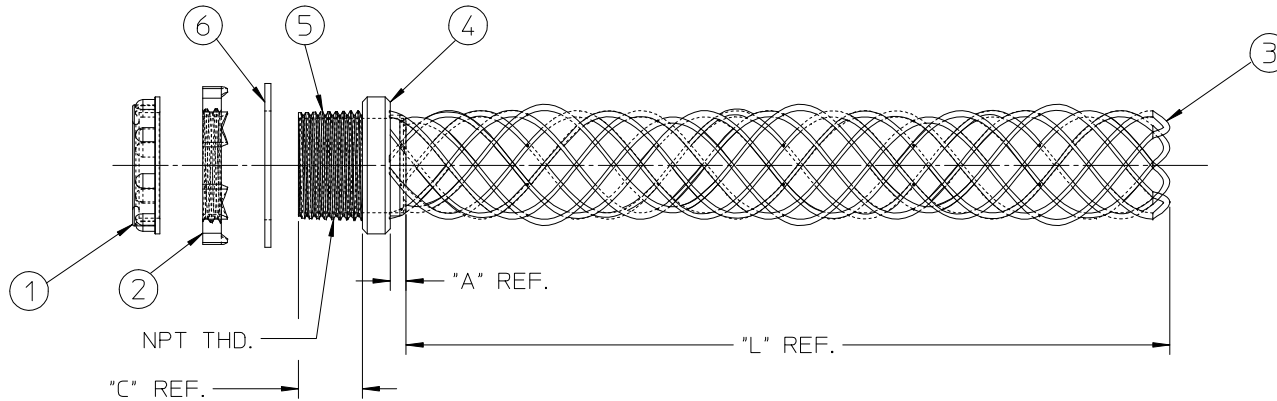
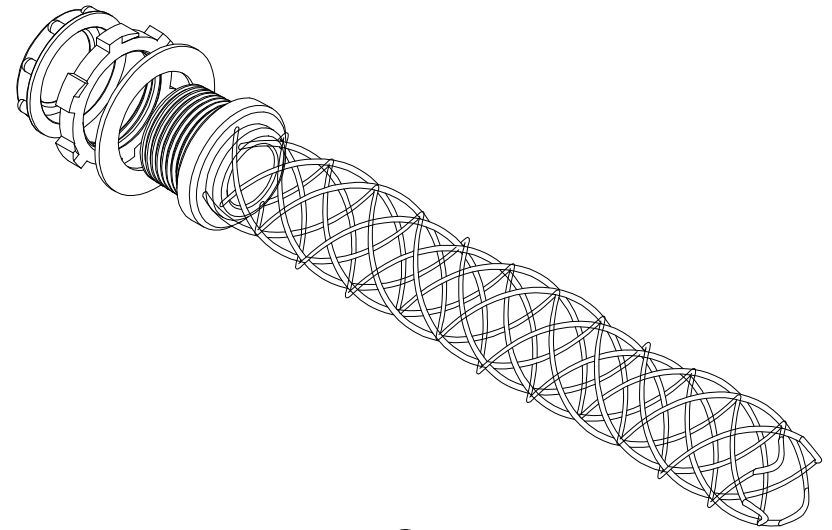
**Need more information on product  
environmental compliance?**

Email [productcompliance@molex.com](mailto:productcompliance@molex.com)  
 For a multiple part number RoHS Certificate of  
 Compliance, [click here](#)

Please visit the [Contact Us](#) section for any  
 non-product compliance questions.

**Search Parts in this Series**  
[130097Series](#)

PART NUMBER	OLD PART NUMBER	CORD DIAMETER RANGE	FITTING SIZE NPT	BREAK STRENGTH	*A* DIMENSION	*L*		*C*
						LENGTH REF. WITH ROD	LENGTH REF. WITHOUT ROD	
1300970256	36501	.22-.32/5.6-8.1	1/2"	300 LBS	.109/2.77	4.00/101.6	4.50/114.3	.65/16.5
1300970258	36503	.30-.43/7.6-10.9	1/2"	300 LBS	.109/2.77	4.50/114.3	4.75/120.7	.65/16.5
1300970260	36505	.40-.54/10.2-13.7	1/2"	370 LBS	.109/2.77	5.50/139.8	6.00/152.4	.65/16.5
1300970262	36508	.52-.73/13.2-18.5	3/4"	450 LBS	.109/2.77	6.50/165.1	7.50/190.5	.67/17.0
1300970265	36512	.70-.97/17.8-24.6	1"	700 LBS	.109/2.77	8.00/203.2	9.25/234.9	.82/20.8
1300970269	36515	.94-1.25/23.9-31.8	1-1/4"	700 LBS	.109/2.77	9.00/228.6	11.00/279.4	.85/21.6
1300970271	36516	1.20-1.50/30.5-38.1	1-1/2"	1400 LBS	.109/2.77	11.00/279.4	11.75/298.5	.87/22.1
1300970272	36517	1.40-1.75/35.5-44.5	2"	1400 LBS	.187/4.75	13.0/330.2	14.00/355.6	.90/22.9
1300970273	36518	1.62-2.00/41.1-50.8	2-1/2"	1400 LBS	.250/6.35	13.50/342.9	15.50/393.7	1.35/34.3
1300970274	36519	2.00-2.45/50.8-62.2	2-1/2"	1400 LBS	.250/6.35	13.50/342.9	17.00/431.8	1.35/34.3



6	1	GASKET (B)	NEOPRENE	BLACK
5	1	THREADED BODY	ALUMINUM	NONE
4	1	OUTER RING	ALUMINUM	NONE
3	1	WIRE MESH ASSEMBLY	STEEL	GALVANIZED
2	1	LOCKNUT	STEEL	ZINC PLATED
1	1	BUSHING	NYLON 6/6	GRAY
ITEM	QTY.	DESCRIPTION	MATERIAL	FINISH

REV. TABLE DIMS. BOM  
 ADDED GASKET  
 EC NO: WNAZ009-0754  
 DR: WAINSTONE 2009/05/15  
 CHK: B. WOODMAN  
 APPR: J. MURPHY 2009/06/10

QUALITY SYMBOLS  
 ▽=0  
 ▽=0

GENERAL TOLERANCES (UNLESS SPECIFIED)

	mm	INCH
4 PLACES	± .005	± .0005
3 PLACES	± .005	± .0005
2 PLACES	± .01	± .001
1 PLACE	± .03	± .001
ANGULAR ±1/2°		

DRAFT WHERE APPLICABLE  
 MUST REMAIN WITHIN DIMENSIONS

DIMENSION STYLE  
 IN/MM

DRAWN BY DATE  
 S. GARCIA 2009/03/18

CHECKED BY DATE  
 B. WOODMAN 2009/03/18

APPROVED BY DATE  
 J. MURPHY 2009/03/18

MATERIAL NO.

SCALE  
 1:2

DESIGN UNITS  
 INCH

THIRD ANGLE PROJECTION

TITLE  
 WIDE-RANGE GRIP  
 1/2 INSULATED

MOLEX INCORPORATED

DOCUMENT NO.  
 SD-130097-002

SHEET NO.  
 1 OF 1