

PLEASE CHECK WWW.MOLEX.COM FOR LATEST PART INFORMATION

Part Number: **0505978000**
Status: **Active**
Description: 3.96mm (.156") Wire-to-Wire and 6.50mm (.256") Pitch Wire-to-Board Crimp Terminal, 50597, Female, 16-22 AWG, Reel

Documents:

Drawing (PDF)	Product Specification PS-51142-002 (PDF)
Product Specification PS-51138-001 (PDF)	Product Specification PS-51142-003 (PDF)
Product Specification PS-51138-002 (PDF)	RoHS Certificate of Compliance (PDF)

General

Product Family	Crimp Terminals
Series	50597
Crimp Quality Equipment	Yes
Product Name	N/A

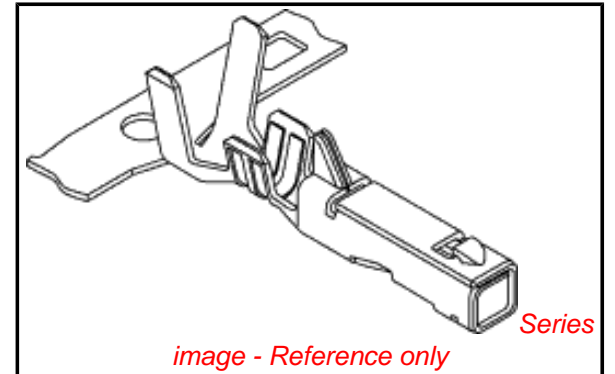
Physical

Gender	Female
Material - Metal	Copper
Material - Plating Mating	Tin
Material - Plating Termination	Tin
Packaging Type	Reel
Plating min: Mating (µin)	36
Plating min: Mating (µm)	0.90
Plating min: Termination (µin)	36
Plating min: Termination (µm)	0.90
Termination Interface: Style	Crimp or Compression
Wire Insulation Diameter	2.00-2.50mm (.079-.098"), 2.00-3.30mm (.079"-.130")
Wire Size AWG	16, 18, 20, 22
Wire Size mm ²	N/A

Material Info

Reference - Drawing Numbers

Product Specification	PS-51138-001, PS-51138-002, PS-51142-002, PS-51142-003, RPS-51142-001, RPS-51142-003, RPS-51142-004, RPS-51142-005, RPS-51142-006, RPS-51142-007, RPS-51142-008, RPS-51142-009
Sales Drawing	SD-50597-8*00



EU RoHS

ELV and RoHS Compliant

REACH SVHC

Contains SVHC: No

Halogen-Free

Status

Halogen-Free

Need more information on product environmental compliance?

Email productcompliance@molex.com
 For a multiple part number RoHS Certificate of Compliance, [click here](#)

Please visit the [Contact Us](#) section for any non-product compliance questions.

China RoHS



Search Parts in this Series

[50597Series](#)

Mates With

[50599](#) male crimp terminal, [50600](#) male crimp terminal 20-26 AWG

Use With

51138 , 51142

Application Tooling | FAQ

Tooling specifications and manuals are found by selecting the products below. Crimp Height Specifications are then contained in the Application Tooling Specification document.

Japan

Description	Product #
--------------------	------------------

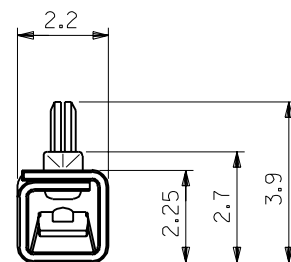
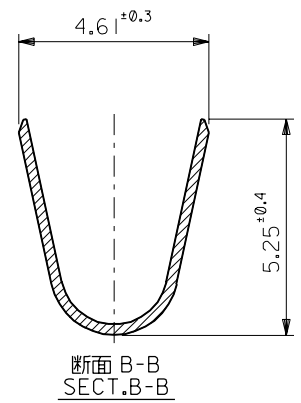
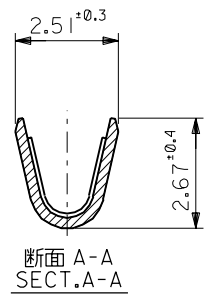
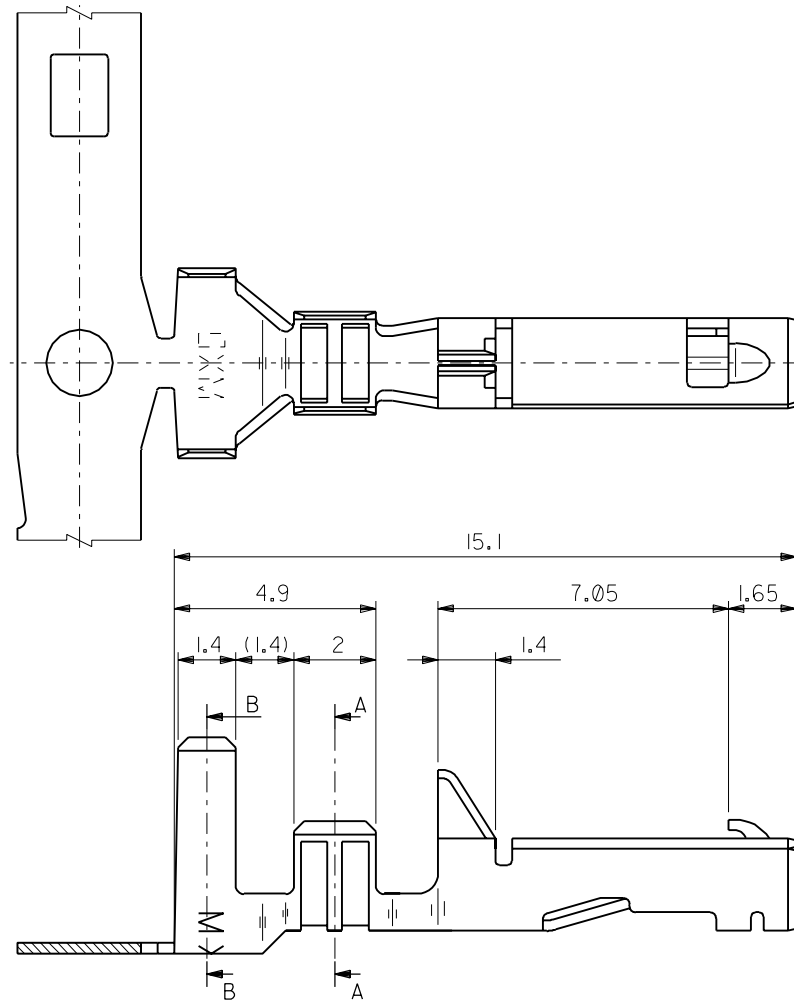
Applicator for M211A Bench Press, 16-26 AWG, for 50597/50598/50599/50600 Crimp Terminal	0573473000
---	------------

Side-Feed Applicator 0573473200
For Full-Auto
Machine
Extraction Tool 0573476000

This document was generated on 04/15/2010

PLEASE CHECK WWW.MOLEX.COM FOR LATEST PART INFORMATION

DWG. NO.
SD-50597-8*00



50597-8100	バラ状 LOOSE
50597-8000	連鎖状 CHAIN
ENG. NO.	端子形状 FORM

注記
NOTES

- 適合ハウジング : 51138 , 51142 シリーズ
APPLICABLE HOUSING : 51138 , 51142 SERIES
 - 材料 : 銅合金, 錫メッキ (t=0.25)
MATERIAL : COPPER ALLOY , TIN PLATED (t=0.25)
- △ リテーナー使用時 : $\phi 2.5$ MAX.
WHEN RETAINER USING : $\phi 2.5$ MAX.

材料 MATERIAL	注記参照 SEE NOTES
仕上げ FINISH	注記参照 SEE NOTES
適用電線範囲 WIRE RANGE	AWG #16-22
被覆外径 INS. RANGE	$\Delta \phi 2.0-3.3$
DRAWN BY '95/12/15 H.HASEGAWA	CHK'D BY '95/12/15 Y.M.HIRAMOTO
APP'D BY '95/12/15 M.FUKUSHIMA	尺度 SCALE 8 : 1
角度 ANGLE	$\pm 3^\circ$
30以上 OVER	± 0.3
10以上 OVER	± 0.25
30未満 UNDER	
10未満 UNDER	± 0.2
一般公差 GENERAL TOLERANCES	
記号 LTR	変更内容 REVISION RECORD
DR. CHK.	日付 DATE

molex MOLEX-JAPAN CO.,LTD. 日本モレックス株式会社	
REVISE ONLY ON CAD SYSTEM	
TITLE 名称 3.96 W/W & W/B CONN. CRIMP TERMINAL	
DWG. NO.	REV
SD-50597-8*00	0

THIS DRAWING CONTAINS INFORMATION THAT IS PROPRIETARY TO MOLEX(JAPAN) AND SHOULD NOT BE USED WITHOUT WRITTEN PERMISSION
本図面は日本モレックス(株)の所有する情報を含むもので 当社の許可なく複製を禁止する。

EN-01C(032)MXJ-32

DIMENSIONS IN METRIC DO NOT SCALE DRAWING

50597-S11