

PLEASE CHECK WWW.MOLEX.COM FOR LATEST PART INFORMATION

Part Number: [0941035106](#)
Status: **Active**
Description: 2.00mm (.079") Pitch SIP Socket with Blind Circuit, SMT Version, 7 Circuit

Documents:

[3D Model](#) [Product Specification PS-94103-005 \(PDF\)](#)
[Drawing \(PDF\)](#) [RoHS Certificate of Compliance \(PDF\)](#)

General

Product Family	Other Sockets
Series	94103
Component Type	Socket
Product Name	SIP

Physical

Circuits (Loaded)	7
Circuits (maximum)	7
Color - Resin	Black
Durability (mating cycles max)	20
Entry Angle	Vertical
Keying to Mating Part	None
Material - Metal	Phosphor Bronze
Material - Plating Mating	Tin
Material - Plating Termination	Tin
Material - Resin	High Temperature Thermoplastic
PCB Locator	No
PCB Retention	None
Packaging Type	Embossed Tape on Reel
Pitch - Mating Interface (in)	0.079 In
Pitch - Mating Interface (mm)	2.00 mm
Pitch - Term. Interface (in)	0.079 In
Pitch - Term. Interface (mm)	2.00 mm
Plating min: Mating (µin)	120.00
Plating min: Mating (µm)	3.000
Plating min: Termination (µin)	120.00
Plating min: Termination (µm)	3.00
Temperature Range - Operating	-40°C to +105°C
Termination Interface: Style	Surface Mount

Electrical

Current - Maximum per Contact	1A
Voltage - Maximum	125V AC

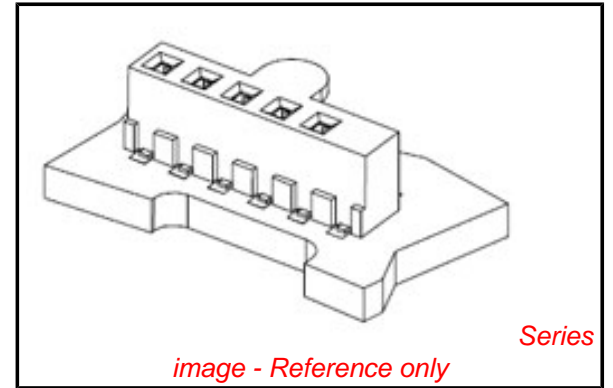
Solder Process Data

Lead-free Process Capability	Reflow Capable (SMT only)
Process Temperature max. C	260

Material Info

Reference - Drawing Numbers

Product Specification	PS-94103-005
Sales Drawing	SD-94103-002



EU RoHS

**ELV and RoHS
Compliant**
**REACH SVHC
Contains SVHC: No**
Halogen-Free
**Status
Not Reviewed**

China RoHS

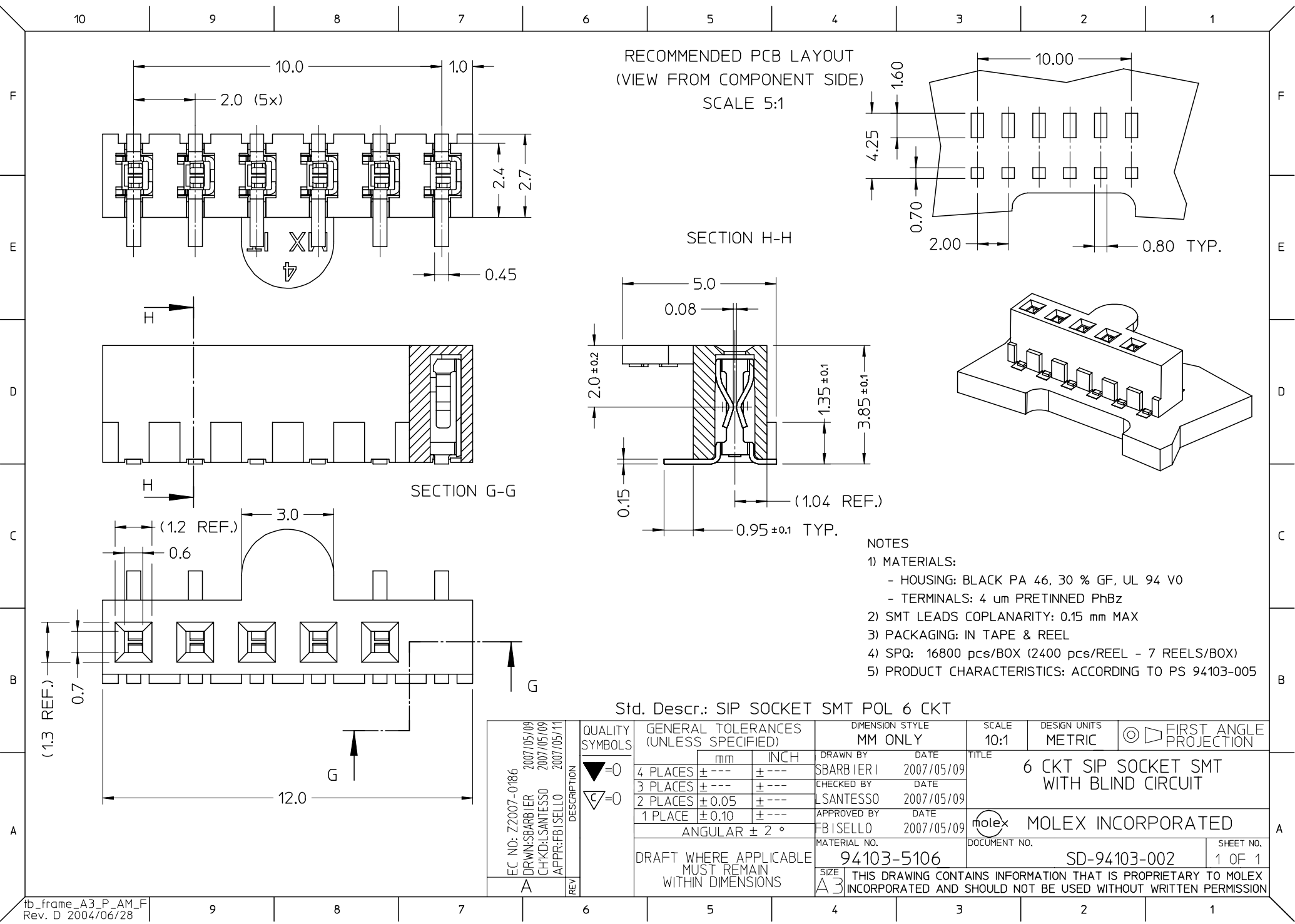


**Need more information on product
environmental compliance?**

Email productcompliance@molex.com
For a multiple part number RoHS Certificate of Compliance, [click here](#)

Please visit the [Contact Us](#) section for any non-product compliance questions.

Search Parts in this Series
[94103Series](#)



RECOMMENDED PCB LAYOUT
(VIEW FROM COMPONENT SIDE)
SCALE 5:1

SECTION H-H

SECTION G-G

NOTES

- 1) MATERIALS:
 - HOUSING: BLACK PA 46, 30 % GF, UL 94 V0
 - TERMINALS: 4 um PRETINNED PbZn
- 2) SMT LEADS COPLANARITY: 0.15 mm MAX
- 3) PACKAGING: IN TAPE & REEL
- 4) SPQ: 16800 pcs/BOX (2400 pcs/REEL - 7 REELS/BOX)
- 5) PRODUCT CHARACTERISTICS: ACCORDING TO PS 94103-005

Std. Descr.: SIP SOCKET SMT POL 6 CKT

EC NO: Z2007-0186 DRWN: SBARBERI 2007/05/09 CHKD: LSANTESSO 2007/05/09 APPR: FBISELLO 2007/05/11	QUALITY SYMBOLS ▽=0 ▽=0	GENERAL TOLERANCES (UNLESS SPECIFIED)		DIMENSION STYLE MM ONLY		SCALE 10:1	DESIGN UNITS METRIC	FIRST ANGLE PROJECTION		
			mm	INCH	DRAWN BY SBARBERI	DATE 2007/05/09	TITLE 6 CKT SIP SOCKET SMT WITH BLIND CIRCUIT			
		4 PLACES	± ---	± ---	CHECKED BY LSANTESSO	DATE 2007/05/09				
		3 PLACES	± ---	± ---	APPROVED BY FBISELLO	DATE 2007/05/09	MOLEX INCORPORATED MATERIAL NO. 94103-5106 DOCUMENT NO. SD-94103-002 SHEET NO. 1 OF 1			
2 PLACES	± 0.05	± ---	DRAFT WHERE APPLICABLE MUST REMAIN WITHIN DIMENSIONS							
1 PLACE	± 0.10	± ---			SIZE A3					