

**PLEASE CHECK WWW.MOLEX.COM FOR LATEST PART INFORMATION**

**Part Number:** [0545593411](#)  
**Status:** **Active**  
**Description:** 2.54mm (0.100") Pitch QF-50™ Flat Cable Receptacle Housing, 34 Circuits

**Documents:**

[3D Model](#) [Product Specification PS-54559-004 \(PDF\)](#)  
[Drawing \(PDF\)](#) [RoHS Certificate of Compliance \(PDF\)](#)

**General**

Product Family Ribbon Cable / Wire Trap Connectors  
 Series [54559](#)  
 Component Type Housing  
 Glow-Wire Compliant No  
 Product Name QF-50™

**Physical**

Circuits (Loaded) 34  
 Color - Resin Black  
 Durability (mating cycles max) 500  
 Entry Angle 90° Angle  
 Lock to Mating Part Yes  
 Material - Metal Phosphor Bronze  
 Material - Plating Mating Gold  
 Material - Plating Termination Gold  
 Material - Resin Polyester  
 Number of Rows 2  
 PCB Retention None  
 Packaging Type Tray  
 Pitch - Mating Interface (in) 0.100 In  
 Pitch - Mating Interface (mm) 2.54 mm  
 Plating min: Mating (µin) 12  
 Plating min: Mating (µm) 0.3  
 Plating min: Termination (µin) 12  
 Plating min: Termination (µm) 0.3  
 Polarized to Mating Part Yes  
 Stackable No  
 Surface Mount Compatible (SMC) N/A  
 Temperature Range - Operating -40°C to +85°C  
 Termination Interface: Style IDT or Pierce  
 Wire Insulation Diameter 1.14mm (.045") max.  
 Wire Size AWG 28  
 Wire/Cable Type Ribbon Cable

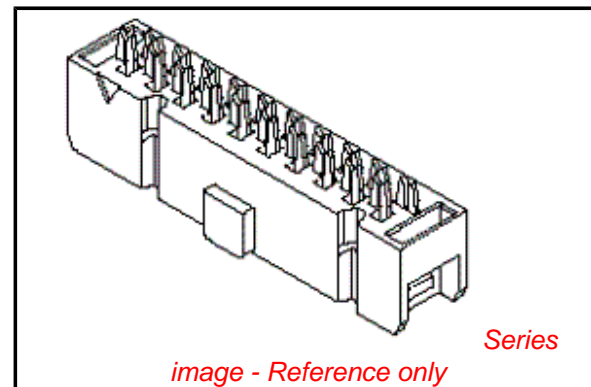
**Electrical**

Current - Maximum per Contact 1A  
 Voltage - Maximum 300V

**Material Info**

**Reference - Drawing Numbers**

Product Specification PS-54559-004, RPS-501577-001, RPS-54559-008,  
 RPS-54559-012, RPS-54559-014, RPS-54559-015  
 Sales Drawing SD-54559-003



**EU RoHS**

**ELV and RoHS  
 Compliant**  
**REACH SVHC  
 Contains SVHC: No**  
**Halogen-Free  
 Status**

**China RoHS**



**Need more information on product  
 environmental compliance?**

Email [productcompliance@molex.com](mailto:productcompliance@molex.com)  
 For a multiple part number RoHS Certificate of  
 Compliance, [click here](#)

Please visit the [Contact Us](#) section for any  
 non-product compliance questions.

**Search Parts in this Series**

[54559Series](#)

**Mates With**

[55401](#) Vertical Header, [55638](#) Right Angle  
 Header

**Use With**

[54561](#) Strain Relief, [54560](#) Upper Housing

**Application Tooling | FAQ**

*Tooling specifications and manuals are  
 found by selecting the products below.  
 Crimp Height Specifications are then  
 contained in the Application Tooling  
 Specification document.*

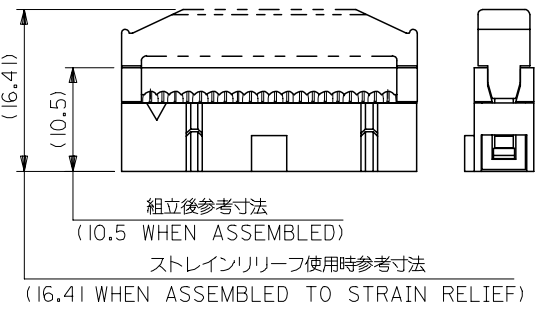
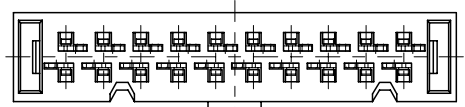
**Japan**

Description	Product #
IDT Hand Tool Assembly For MIL Connector	<a href="#">0572525000</a>
IDT Machine For MIL IDT Connector	<a href="#">0572527000</a>

This document was generated on 04/07/2010

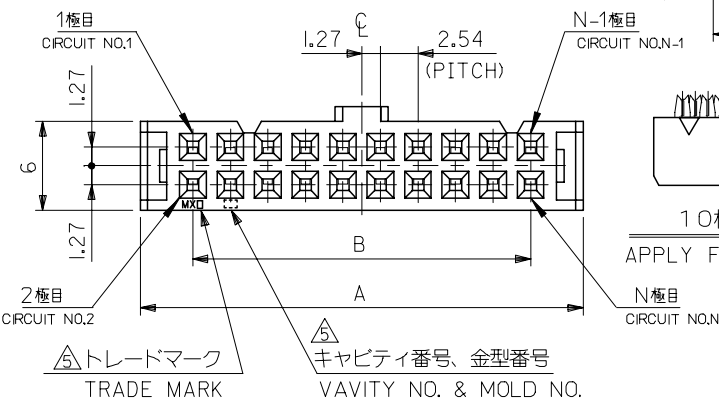
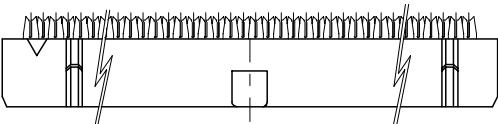
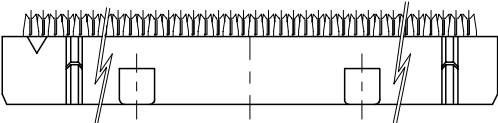
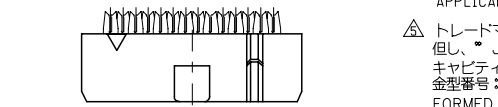
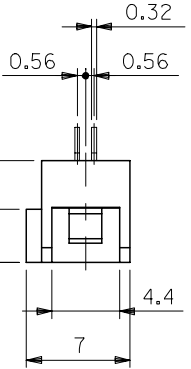
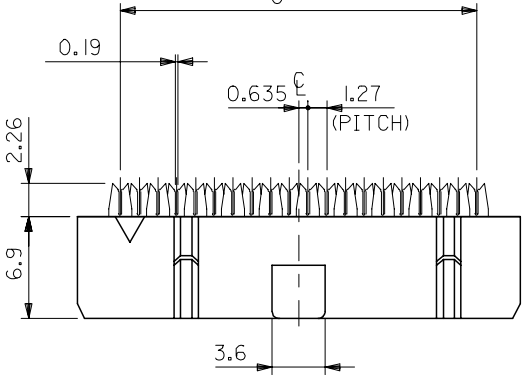
**PLEASE CHECK [WWW.MOLEX.COM](http://WWW.MOLEX.COM) FOR LATEST PART INFORMATION**

10 9 8 7 6 5 4 3 2 1



注記  
NOTES

- 材料 ハウジング : PBT (UL94V-0), 黒色  
ターミナル : リン青銅 (ツツケ下地金メッキ)  
MATERIAL HOUSING : PBT, UL 94V-0, BLACK  
TERMINAL : PHOS. BR. (AU PLATING, NI UNDER-PLATING)
  - 適用電線 : 1.27ピッチリボンケーブル 被覆外径 :  $\phi 1.14$  MAX.  
より線 : AWG#28 (芯線7本構成)  
FOR USE WITH AWG#28 STRANDED WIRE  
(CONSISTS OF 7 CONDUCTORS)  
1.14 DIA. MAX. INSULATION RIBBON CABLE WITH 1.27 CENTERS.
  - 嵌合相手 : 55401-\*\*\*11 は 54559-\*\*\*11 に適用。  
55401-\*\*\*31 は 54559-\*\*\*41 に適用。  
501577 シリ-ズ は 54559-\*\*\*11 に適用。  
55638-\*\*\*11 は 54559-\*\*\*11 に適用。  
55638-\*\*\*31 は 54559-\*\*\*41 に適用。  
MATE WITH : 55401-\*\*\*11 SUITS 54559-\*\*\*11  
55401-\*\*\*31 SUITS 54559-\*\*\*41  
501577 SERIES SUITS 54559-\*\*\*11  
55638-\*\*\*11 SUITS 54559-\*\*\*11  
55638-\*\*\*31 SUITS 54559-\*\*\*41.
  - 適合アッパーハウジング : 54560-\*\*\*01  
APPLICABLE UPPER HSG : 54560-\*\*\*01  
適合ストレーンリリーフ : 54561-\*\*\*  
APPLICABLE STRAIN RELIEF : 54561-\*\*\*01
- △トレードマーク : MXプラス製造工場を示すアルファベットにて構成  
但し、"J" は JAPANを示す。(例 MX J)  
キャビティ番号 : 数字で表示。  
金型番号 : アルファベットにて構成。  
FORMED BY MX AND ALPHABET WHICH MEAN  
THE MANUFACTORY, BUT "J" MEANS JAPAN. (TO TRADE MARK)  
(e.g. MXJ)  
AND BY NUMBERS (TO CAVITY NO.)  
AND BY ALPHABET (TO MOLD NO.)



C	B	A	MATERIAL NO.	CKT.
80.01	78.74	85.85	54559-6441	64
			54559-6411	
74.93	73.66	80.77	54559-6041	60
			54559-6011	
62.23	60.96	68.07	54559-5041	50
			54559-5011	
49.53	48.26	55.37	54559-4011	40
41.91	40.64	47.75	54559-3411	34
36.83	35.56	42.67	54559-3011	30
31.75	30.48	37.59	54559-2611	26
24.13	22.86	29.97	54559-2011	20
19.05	17.78	24.89	54559-1611	16
16.51	15.24	22.35	54559-1411	14
11.43	10.16	17.27	54559-1011	10
C	B	A	MATERIAL NO.	CKT.

REVISED EC NO: J2007-2853 DRW: NABEI 2007/04/13 CHKD: YMAEDA 2007/04/13 APPR: NUKITA 2007/04/13 DESCRIPTION REV	GENERAL TOLERANCES (UNLESS SPECIFIED)		DIMENSION STYLE MM ONLY		SCALE 3:1	DESIGN UNITS METRIC	THIRD ANGLE PROJECTION
	10 UNDER	±0.2	DRAWN BY S. MATSUZAKI	DATE '99/03/04	TITLE 2.54 FLAT CABLE CONN. REC HOUSING ASSY		
	10 OVER 30 UNDER	±0.25	CHECKED BY S. KUNISHI	DATE '03/08/06			
	30 OVER	±0.3	APPROVED BY T. YAMAGUCHI	DATE '03/08/06	MOLEX MOLEX INCORPORATED		
	ANGULAR	±3 °	MATERIAL NO.	SEE CHART			
DRAFT WHERE APPLICABLE MUST REMAIN WITHIN DIMENSIONS		SIZE A3	THIS DRAWING CONTAINS INFORMATION THAT IS PROPRIETARY TO MOLEX INCORPORATED AND SHOULD NOT BE USED WITHOUT WRITTEN PERMISSION				