

PLEASE CHECK WWW.MOLEX.COM FOR LATEST PART INFORMATION

Part Number: [0191640042](#)
Status: **Active**
Description: Perma-Seal™ 3-Way Connector Assembly for 14-16 AWG Wire

Documents:

[Drawing \(PDF\)](#) [RoHS Certificate of Compliance \(PDF\)](#)

General

Product Family	Splices
Series	19164
Crimp Quality Equipment	Yes
Mil-Spec	N/A
Product Name	3 Way, Perma-Seal™

Physical

Barrel Type	Closed
Insulation	NiAc™
Material - Metal	Copper
Material - Plating Mating	Tin
Material - Plating Termination	Tin
Packaging Type	Bag
Plating min: Mating (µin)	100
Plating min: Mating (µm)	2.5
Plating min: Termination (µin)	100
Plating min: Termination (µm)	2.5
Temperature Range - Operating	-55°C to +125°C
Wire Insulation Diameter	5.97mm (.235") max
Wire Size AWG	14, 16
Wire Size mm²	1.23 - 1.94

Electrical

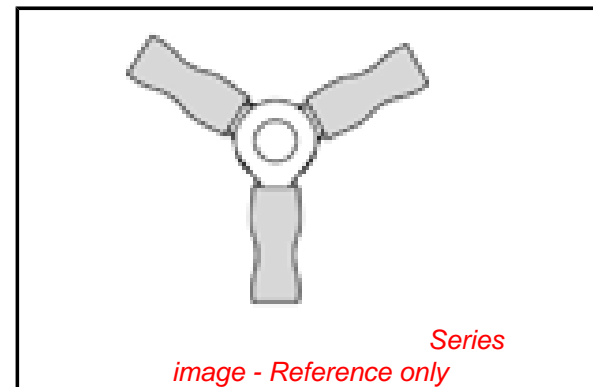
Voltage - Maximum	600V
-------------------	------

Material Info

Old Part Number	SB-2YCX
-----------------	---------

Reference - Drawing Numbers

Sales Drawing	SD-19164-051, SD-19204-001
---------------	----------------------------



EU RoHS

ELV and RoHS Compliant
REACH SVHC
 Not Reviewed
Halogen-Free Status

China RoHS



Not Reviewed

Need more information on product environmental compliance?

Email productcompliance@molex.com
 For a multiple part number RoHS Certificate of Compliance, [click here](#)

Please visit the [Contact Us](#) section for any non-product compliance questions.

Search Parts in this Series

[19164Series](#)

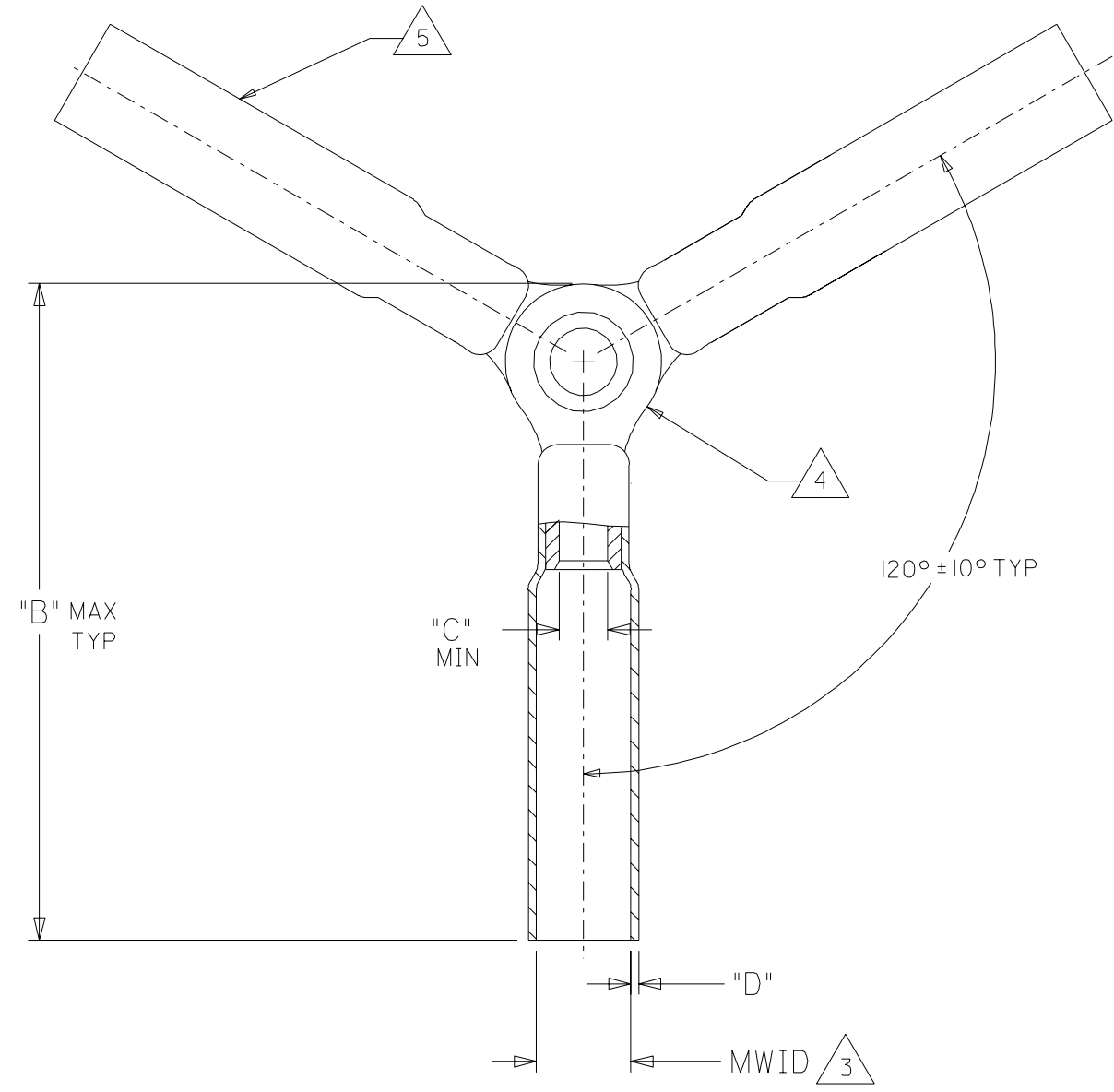
Application Tooling | [FAQ](#)

Tooling specifications and manuals are found by selecting the products below. Crimp Height Specifications are then contained in the Application Tooling Specification document.

Global

Description	Product #
Power Crimp Tool Head for Prema-Seal™ Terminals 10-22 AWG	0640057400
Hand Crimp Tool, UL Approved	0640017400

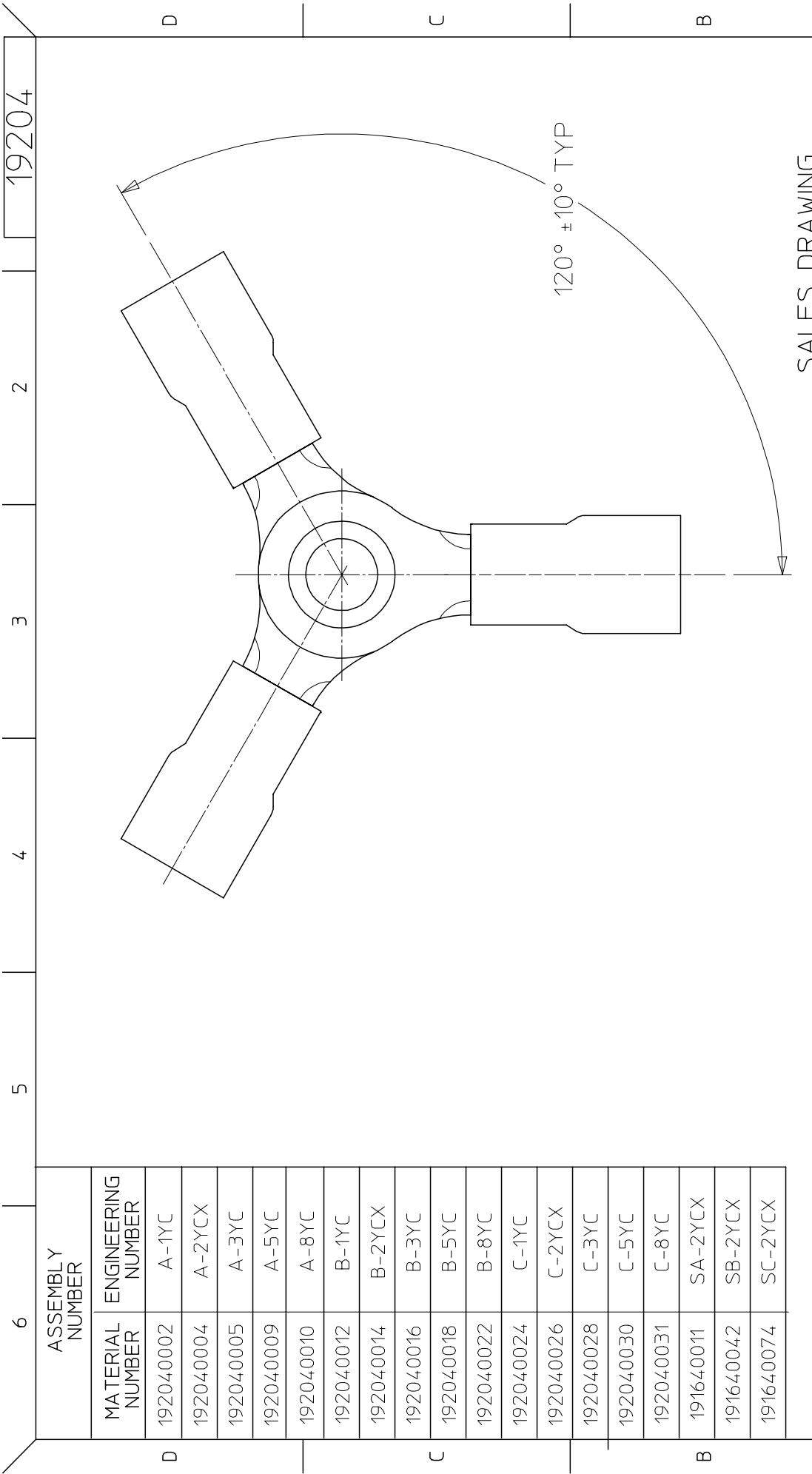
MATERIAL NUMBER	ENGINEERING NUMBER	WIRE SIZE AWG	WIRE SIZE MM SQ.	PERMA-SEAL COLOR	MWID	B MAX	C MIN	D
191640011	SA-2YCX	22-18	.25-1.5	RED	.215/5.46	1.25/31.8	.62/1.57	.025/0.64
191640042	SB-2YCX	16-14	1.0-2.5	BLUE	.235/5.97	1.24/31.5	1.24/31.5	.029/0.74
191640074	SC-2YCX	12-10	4.0-6.0	YELLOW	.310/7.62	1.34/34.0	.128/3.25	.029/0.74



- NOTES;
1. CONNECTION BETWEEN TERMINALS TO BE TIGHT.
 2. RIVET NOT TO BE SPLIT.
 3. MWID = MAXIMUM WIRE INSULATION DIAMETER.
 4. TERMINAL MATERIAL: COPPER ALLOY.
 5. INSULATION MATERIAL: HEAT SHRINKABLE TUBING WITH HOTMELT ADHESIVE INNER LINER. COLOR SEE CHART.

SALES DRAWING

NEW RELEASE EC NO. ETC2003-0136 DRWN: BRE 03/03/20 CHK: HEB 03/03/20 APPR: RWD 03/03/20	QUALITY SYMBOLS	GENERAL TOLERANCES: (UNLESS SPECIFIED)		SCALE NO: NE	DESIGN UNITS	THIRD ANGLE PROJECTION	DIMENSIONS:	SHT	REV
	MAJOR = 0	mm	INCH	mm	INCH	mm ONLY	mm INCH		REVISE ON CAD ONLY
	CRITICAL = 0	4 PLACES ±0.	±.	mm	INCH	mm ONLY	mm ONLY		
		3 PLACES ±0.	±.	mm	INCH	mm ONLY	mm ONLY		
	2 PLACES ±0.	±.	mm	INCH	mm ONLY	mm ONLY			
	1 PLACE ±0.	±.	mm	INCH	mm ONLY	mm ONLY			
		ANGULAR: ±	°						
		DRAFT WHERE APPLICABLE MUST REMAIN WITHIN DIMENSIONS			DRAWN BY & DATE BRE 02/11/15		TITLE: 3-WAY NIAC CONNECTOR ASSEMBLY		
					CHECKED BY & DATE HEB 02/11/15				
					APPROVED BY & DATE RWD 15/11/15		MOLEX INCORPORATED		
					CAD FILENAME E-19164-051.DGN	MATERIAL NO. SEE CHART	DRAWING NO. SD-19164-051	SHEET NO. 1 OF 1	
		THIS DRAWING CONTAINS INFORMATION THAT IS PROPRIETARY TO MOLEX INCORPORATED AND SHOULD NOT BE USED WITHOUT WRITTEN PERMISSION.							
		SIZE B							



SALES DRAWING

19204

2

3

4

5

6

ASSEMBLY NUMBER	
MATERIAL NUMBER	ENGINEERING NUMBER
192040002	A-1YC
192040004	A-2YCX
192040005	A-3YC
192040009	A-5YC
192040010	A-8YC
192040012	B-1YC
192040014	B-2YCX
192040016	B-3YC
192040018	B-5YC
192040022	B-8YC
192040024	C-1YC
192040026	C-2YCX
192040028	C-3YC
192040030	C-5YC
192040031	C-8YC
191640011	SA-2YCX
191640042	SB-2YCX
191640074	SC-2YCX

WAS 65252-01C/-02C	EC NO: ETIC2003-0305	DRWN:DMYRCK 2003/05/16	CHKD:RWD 2003/05/16	APPR:RDEROSS 2003/05/16	DESCRIPTION	REV
					QUALITY SYMBOLS	
					▲ = 0	
					△ = 0	
					GENERAL TOLERANCES (UNLESS SPECIFIED)	
		SCALE NTS	DESIGN UNITS INCH	THIRD ANGLE PROJECTION	REVISE ON CAD ONLY	
		DIMENSION STYLE IN/MM		TITLE		
		DRAWN BY RWD	DATE 03/05/14	3-WAY CONNECTOR ASSEMBLY		
		CHECKED BY RWD	DATE 03/05/14	MOLEX INCORPORATED		
		APPROVED BY RWD	DATE 03/05/14	MATERIAL NO. DOCUMENT NO. SHEET NO.		
				SD-19204-001 1 OF 1		
THIS DRAWING CONTAINS INFORMATION THAT IS PROPRIETARY TO MOLEX INCORPORATED AND SHOULD NOT BE USED WITHOUT WRITTEN PERMISSION						