

PLEASE CHECK WWW.MOLEX.COM FOR LATEST PART INFORMATION

Part Number: [0424000004](#)
Status: **Active**
Overview: [flat blade](#)
Description: Flat Blade Appliance Defrost Timer Connector, 4 Circuit

Documents:

[3D Model](#) [RoHS Certificate of Compliance \(PDF\)](#)
[Drawing \(PDF\)](#)

Agency Certification

CSA LR19980
 UL E29179

General

Product Family Crimp Housings
 Series [42400](#)
 Overview [flat blade](#)
 Product Name Flat Blade

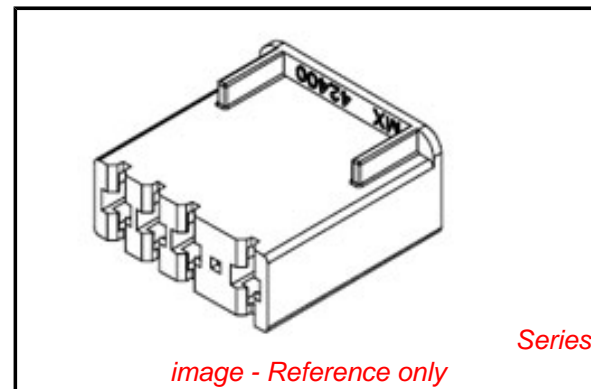
Physical

Circuits (maximum) 4
 Color - Resin Black
 Flammability 94V-0
 Gender Female
 Glow-Wire Compliant No
 Keying to Mating Part Yes
 Lock to Mating Part None
 Material - Resin Nylon
 Number of Rows 1
 Packaging Type Bag
 Panel Mount No
 Pitch - Mating Interface (in) 0.219 In, 0.379 In
 Pitch - Mating Interface (mm) 5.56 mm, 9.63 mm
 Pitch - Term. Interface (in) 0.219 In, 0.379 In
 Pitch - Term. Interface (mm) 5.56 mm, 9.63 mm
 Stackable No
 Temperature Range - Operating -40°C to +75°C

Material Info

Reference - Drawing Numbers

Packaging Specification PK-42400-001
 Sales Drawing SD-42400-*00*



EU RoHS

**ELV and RoHS
 Compliant**
**REACH SVHC
 Contains SVHC: No**
**Halogen-Free
 Status**

China RoHS



**Need more information on product
 environmental compliance?**

Email productcompliance@molex.com
 For a multiple part number RoHS Certificate of
 Compliance, [click here](#)

Please visit the [Contact Us](#) section for any
 non-product compliance questions.

Search Parts in this Series

[42400Series](#)

Mates With

Appliance Timer

Use With

[41422](#)

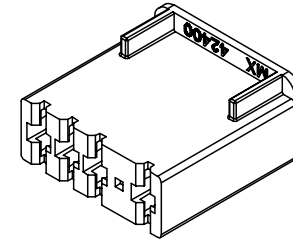
13 12 11 10 9 8 7 6 5 4 3 2 1

J
I
H
G
F
E
D
C
B
A

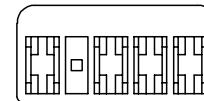
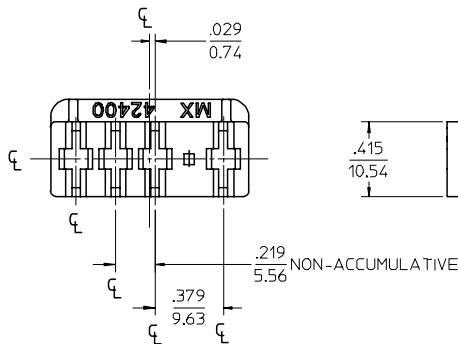
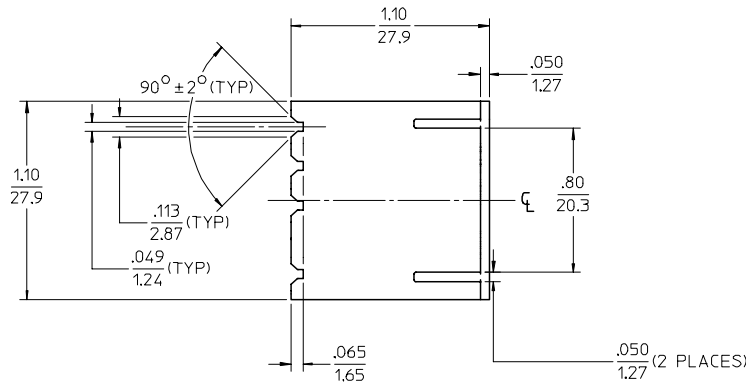
J
I
H
G
F
E
D
C
B
A

NOTES:

1. MATERIAL: SEE CHART ON SHEET 3
2. FINISH: NONE
3. PRODUCT SPECIFICATION: NONE
4. HOUSING MATES TO .032±.0005/0.81±0.013 THICK BY .250/6.35 WIDE BY .31/7.9 LONG SPADE TERMINALS. MAXIMUM LENGTH OF SPADE TERMINALS TO BE .450/11.43.
5. USE TERMINALS: ENG. NO. 41422-3* & -5*.
6. PARTS CONFORM TO CLASS 'B' REQUIREMENTS OF COSMETIC SPECIFICATION PS-45499-002.



42400-000*



| ANGLE TOLERANCE FCC NO: UCP2008-1155 2007/11/20 DRW: NLSCHM/DT 2007/11/20 CHKD: ADERR 2007/11/20 APPR: FSM/TH 2007/11/20 REV DESCRIPTION | QUALITY SYMBOLS ▽=0 ▽=0 | GENERAL TOLERANCES (UNLESS SPECIFIED) <table border="1"> <thead> <tr> <th></th> <th>mm</th> <th>INCH</th> </tr> </thead> <tbody> <tr> <td>4 PLACES</td> <td>± .10</td> <td>± .004</td> </tr> <tr> <td>3 PLACES</td> <td>± .12</td> <td>± .005</td> </tr> <tr> <td>2 PLACES</td> <td>± .15</td> <td>± .006</td> </tr> <tr> <td>1 PLACE</td> <td>± .20</td> <td>± .008</td> </tr> </tbody> </table> | | mm | INCH | 4 PLACES | ± .10 | ± .004 | 3 PLACES | ± .12 | ± .005 | 2 PLACES | ± .15 | ± .006 | 1 PLACE | ± .20 | ± .008 | DIMENSION STYLE IN/MM | SCALE 2:1 | DESIGN UNITS INCH | THIRD ANGLE PROJECTION |
|--|-------------------------------|--|--|----|------|----------|-------|--------|----------|-------|--------|----------|-------|--------|---------|-------|--------|--------------------------|--------------|----------------------|------------------------|
| | | mm | INCH | | | | | | | | | | | | | | | | | | |
| | 4 PLACES | ± .10 | ± .004 | | | | | | | | | | | | | | | | | | |
| | 3 PLACES | ± .12 | ± .005 | | | | | | | | | | | | | | | | | | |
| 2 PLACES | ± .15 | ± .006 | | | | | | | | | | | | | | | | | | | |
| 1 PLACE | ± .20 | ± .008 | | | | | | | | | | | | | | | | | | | |
| | | DRAWN BY DATE MAB 1995/06/09 | TITLE 4 CIRCUIT CONNECTOR HOUSING | | | | | | | | | | | | | | | | | | |
| | | CHECKED BY DATE KBP 1995/06/09 | MATERIAL NO. DATE RAS 1995/06/09 | | | | | | | | | | | | | | | | | | |
| | | APPROVED BY DATE RAS 1995/06/09 | MOLEX INCORPORATED DOCUMENT NO. SHEET NO. SD-42400-*00* 1 OF 3 | | | | | | | | | | | | | | | | | | |

DRAFT WHERE APPLICABLE MUST REMAIN WITHIN DIMENSIONS

SEE CHART

THIS DRAWING CONTAINS INFORMATION THAT IS PROPRIETARY TO MOLEX INCORPORATED AND SHOULD NOT BE USED WITHOUT WRITTEN PERMISSION

12 11 10 9 8 7 6 5 4 3 2 1

13 12 11 10 9 8 7 6 5 4 3 2 1

J

I

H

G

F

E

D

C

B

A

J

I

H

G

F

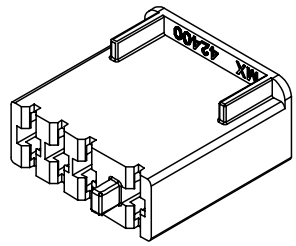
E

D

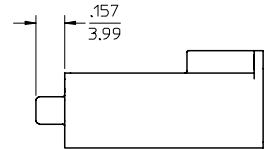
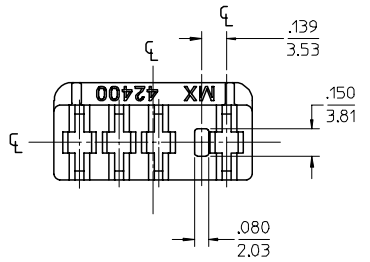
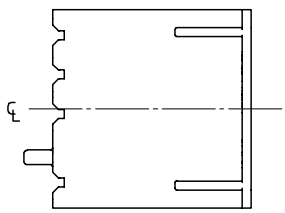
C

B

A



42400-100*



42400-100*
SEE SHEET 1 FOR DIMENSIONS NOT SHOWN

| | | | | | | | | | |
|--|---|-----------------|--|---|-----------------|--------------|--|--|--|
| SEE SHEET 1 FC NO: UCP2008-1155 DRAWN: LSCHMIDT CHKD: ADERR APPR: FSM TH REV: | DESCRIPTION 2007/11/20 2007/11/20 2007/11/20 | QUALITY SYMBOLS | | GENERAL TOLERANCES (UNLESS SPECIFIED) 4 PLACES ± .010 3 PLACES ± .010 2 PLACES ± 0.25 ± .014 1 PLACE ± 0.35 ± .014 ANGULAR ± 1 ° | DIMENSION STYLE | | SCALE 2:1 DESIGN UNITS INCH THIRD ANGLE PROJECTION | TITLE 4 CIRCUIT CONNECTOR HOUSING MOLEX INCORPORATED DOCUMENT NO. SD-42400-*00* SHEET NO. 2 OF 3 | |
| | | IN/MM | | | DRAWN BY | DATE | | | |
| | | MAB | | | 1995/06/09 | | | | |
| | | KBP | | | 1995/06/09 | | | | |
| DRAFT WHERE APPLICABLE MUST REMAIN WITHIN DIMENSIONS | | APPROVED BY | | DATE | | MATERIAL NO. | | RAS | |
| SEE CHART | | 1995/06/09 | | | | | | | |

12 11 10 9 8 7 6 5 4 3 2 1

13 12 11 10 9 8 7 6 5 4 3 2 1

J

I

H

G

F

E

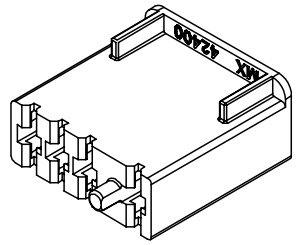
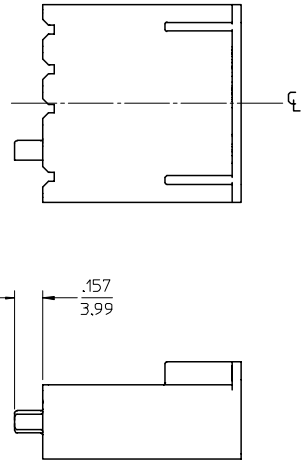
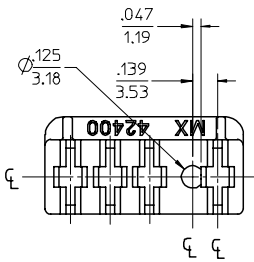
D

C

B

A

| ENG. NUMBER | E.D.P. NUMBER | NUMBER CIRCUITS | MATERIAL | COLOR | COMMENTS |
|-------------|---------------|-----------------|----------------|---------|--------------------|
| 42400-0001 | 06-02-3042 | 4 | UL94 V-2 NYLON | NATURAL | NO PEG (SHT.1) |
| 42400-0003 | 42400-0003 | 4 | UL94 V-0 NYLON | WHITE | NO PEG (SHT.1) |
| 42400-0004 | 42400-0004 | 4 | UL94 V-0 NYLON | BLACK | NO PEG (SHT.1) |
| 42400-1003 | 42400-1003 | 4 | UL94 V-0 NYLON | WHITE | SQUARE PEG (SHT.2) |
| 42400-1004 | 42400-1004 | 4 | UL94 V-0 NYLON | BLACK | SQUARE PEG (SHT.2) |
| 42400-2001 | 42400-2001 | 4 | UL94 V-2 NYLON | NATURAL | ROUND PEG (SHT.3) |
| 42400-2003 | 42400-2003 | 4 | UL94 V-0 NYLON | WHITE | ROUND PEG (SHT.3) |
| 42400-2004 | 42400-2004 | 4 | UL94 V-0 NYLON | BLACK | ROUND PEG (SHT.3) |



42400-200*

42400-200*
SEE SHEET 1 FOR DIMENSIONS NOT SHOWN

| | | | | |
|---|--|---|--|--|
| SEE SHEET 1 FCC NO: UCP2008-1155 DRAWN: LSCHMIDT CHKD: ADERR APPR: FSM TH REV: | QUALITY SYMBOLS ▽=0 ▽=0 | GENERAL TOLERANCES (UNLESS SPECIFIED) 4 PLACES ± .010 ± .010 3 PLACES ± .010 ± .010 2 PLACES ± 0.25 ± .014 1 PLACE ± 0.35 ± .014 ANGULAR ± 1 ° | DIMENSION STYLE IN/MM DRAWN BY DATE MAB 1995/06/09 CHECKED BY DATE KBP 1995/06/09 APPROVED BY DATE RAS 1995/06/09 | SCALE 2:1 DESIGN UNITS INCH THIRD ANGLE PROJECTION |
| | DRAFT WHERE APPLICABLE MUST REMAIN WITHIN DIMENSIONS | | | TITLE 4 CIRCUIT CONNECTOR HOUSING |
| | MATERIAL NO. SEE CHART | | MOLEX INCORPORATED | |
| | SIZE C | | DOCUMENT NO. SD-42400-*00* | SHEET NO. 3 OF 3 |

12 11 10 9 8 7 6 5 4 3 2 1