

PLEASE CHECK WWW.MOLEX.COM FOR LATEST PART INFORMATION

Part Number: [0943225006](#)
Status: **Active**
Description: 3.00mm (.118) Pitch, Battery Connector, SMT, 6 CKT

Documents:

[3D Model](#) [Product Specification PS-94322-001 \(PDF\)](#)
[Drawing \(PDF\)](#) [RoHS Certificate of Compliance \(PDF\)](#)

General

Product Family PCB Headers
 Series [94322](#)
 Application Board-to-Board
 Product Name Battery Connector

Physical

Breakaway No
 Circuits (Loaded) 6
 Color - Resin Black
 Glow-Wire Compliant No
 Guide to Mating Part No
 Keying to Mating Part None
 Lock to Mating Part None
 Material - Metal Beryllium Copper
 Material - Plating Mating Gold
 Material - Plating Termination Tin
 Material - Resin High Temperature Thermoplastic
 Number of Rows 1
 Orientation Bottom Entry
 PCB Retention None
 Packaging Type Embossed Tape on Reel
 Pitch - Mating Interface (in) 0.118 In
 Pitch - Mating Interface (mm) 3.00 mm
 Pitch - Term. Interface (in) 0.118 In
 Pitch - Term. Interface (mm) 3.00 mm
 Plating min: Mating (µin) 20
 Plating min: Mating (µm) 0.5
 Plating min: Termination (µin) 152
 Plating min: Termination (µm) 3.8
 Temperature Range - Operating -40°C to +85°C
 Termination Interface: Style Surface Mount

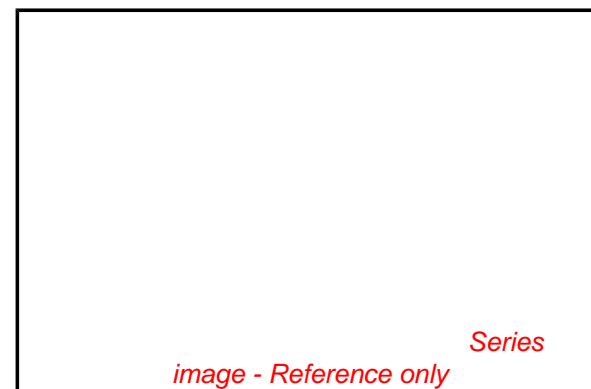
Electrical

Current - Maximum per Contact 2A
 Voltage - Maximum 125V (RMS)

Material Info

Reference - Drawing Numbers

Packaging Specification PK-94322-001
 Product Specification PS-94322-001, RPS-94322-001
 Sales Drawing SD-94322-001



EU RoHS

**ELV and RoHS
 Compliant**
REACH SVHC
 Not Reviewed
**Halogen-Free
 Status**
Not Reviewed

China RoHS



**Need more information on product
 environmental compliance?**

Email productcompliance@molex.com
 For a multiple part number RoHS Certificate of
 Compliance, [click here](#)

Please visit the [Contact Us](#) section for any
 non-product compliance questions.

Search Parts in this Series

[94322Series](#)

10 9 8 7 6 5 4 3 2 1

F

E

D

C

B

A

F

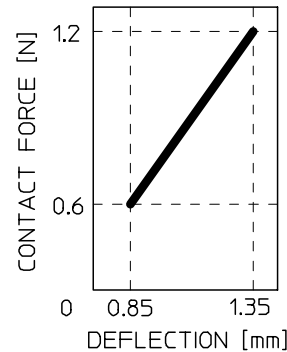
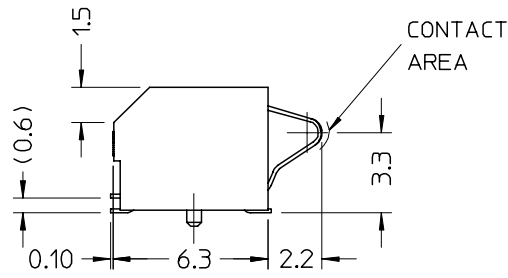
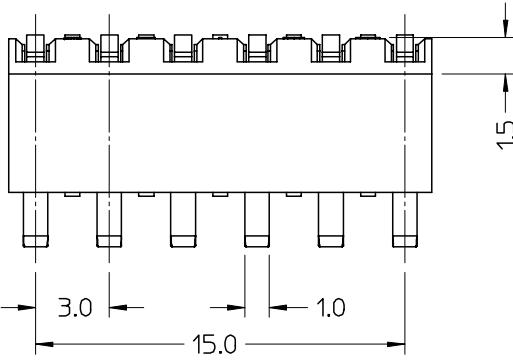
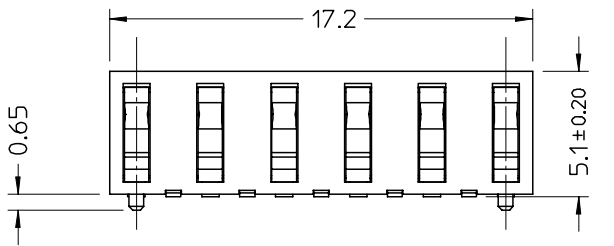
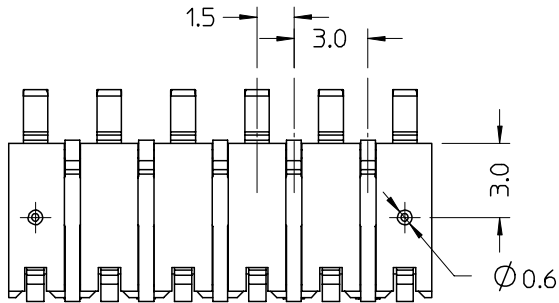
E

D

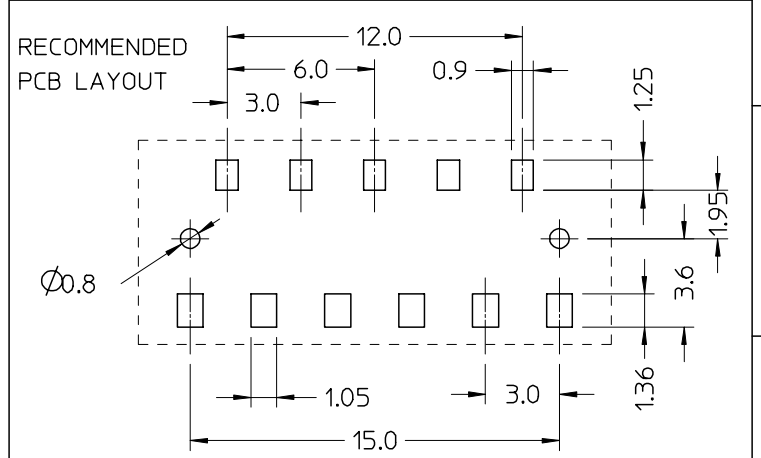
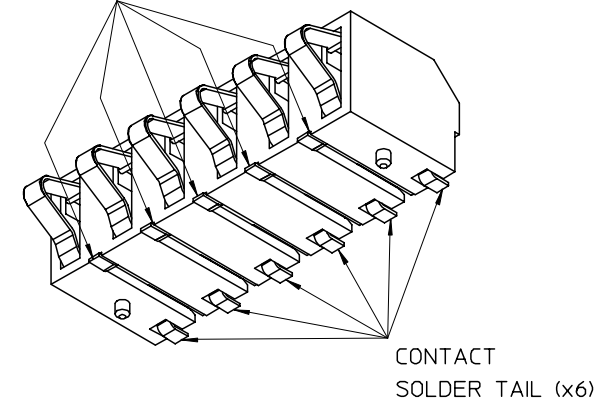
C

B

A



STABILIZER (x5)



GENERAL TOLERANCES: ±0.05

NOTES:

- 1) MATERIALS:
 - HOUSING: PA6T 30%GF UL94 V-0 BLACK
 - CONTACTS: BERYLLIUM COPPER
 - STABILIZERS: BERYLLIUM COPPER
- 2) PLATING:
 - CONTACT AREA: 0.5μm MIN SELECTIVE Au
 - SOLDER TAIL : 3μm MIN SELECTIVE Sn
 - OVERALL: 1.27μm MIN Ni
- 3) PACKAGING: SEE DRAWING PK-94322-001

Std. Descr.: BATTERY CONNECTOR SMT 6 CKT

EC NO: Z2007-0007 DRWN:RSANDANO06/07/12 CHKD: 2006/07/12 APPR: SBARBIE 2006/07/19	QUALITY SYMBOLS ▴ - 0 ▽ - 0	GENERAL TOLERANCES (UNLESS SPECIFIED)		SCALE 5:1	DESIGN UNITS METRIC	FIRST ANGLE PROJECTION	REVISE ON CAD ONLY																			
		<table border="1"> <thead> <tr> <th></th> <th>mm</th> <th>INCH</th> </tr> </thead> <tbody> <tr> <td>4 PLACES</td> <td>±---</td> <td>±---</td> </tr> <tr> <td>3 PLACES</td> <td>±---</td> <td>±---</td> </tr> <tr> <td>2 PLACES</td> <td>±0.25</td> <td>±---</td> </tr> <tr> <td>1 PLACE</td> <td>±0.3</td> <td>±---</td> </tr> <tr> <td colspan="2">ANGULAR</td> <td>±---°</td> </tr> </tbody> </table>			mm	INCH	4 PLACES	±---	±---	3 PLACES	±---	±---	2 PLACES	±0.25	±---	1 PLACE	±0.3	±---	ANGULAR		±---°	DIMENSION STYLE MM ONLY		TITLE		
			mm	INCH																						
		4 PLACES	±---	±---																						
3 PLACES	±---	±---																								
2 PLACES	±0.25	±---																								
1 PLACE	±0.3	±---																								
ANGULAR		±---°																								
DRAFT WHERE APPLICABLE MUST REMAIN WITHIN DIMENSIONS		APPROVED BY SBARBIE 2006/07/12		DATE 2006/07/12		MATERIAL NO. 94322-5006																				
A		REV		DOCUMENT NO. SD-94322-001		SHEET NO. 1 OF 1																				

9 8 7 6 5 4 3 2 1

A3