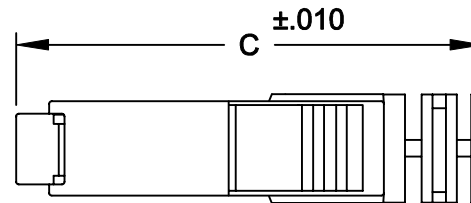
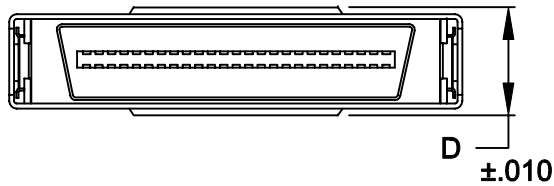
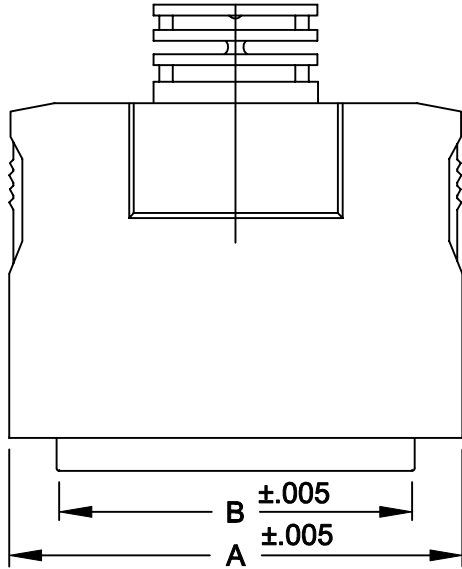


DESCRIPTION: .050 Ribbon Plastic Backshell w/Spring Latches

	A	B	C	D
50	1.917	1.404	1.732	.504
	48.70	35.66	43.99	12.80



Kit Includes:

- (1) Male Solder Cup Connector
- (2) Metal Shell Halves
- (2) Spring Latches
- (1) Plastic Housing Cover - Beige

Materials:

Connector:

Insulator: High Temp plastic
U.L. rated 94V-0

Contacts: Copper Alloy

Shell: Steel

Backshell: Glass-Filled Thermoplastic. U.L. rated 94V-0

Electricals:

Contact current rating: 1.0 Amp


Dielectric Withstanding Voltage: AC 500 V r.m.s.

Insulation Resistance: 500 MEGOHMS Min.

Contact Resistance: 25 MILLIOHMS Max.

Operating Temperature: -55°C to + 105°C

SERIES	990-050-010-091
POSITIONS	050
MATERIAL	010 = PLASTIC
COLOR:	09 = IVORY
PUT-UPS	1 = KIT

	THESE DRAWINGS AND SPECIFICATIONS ARE THE PROPERTY OF NorComp AND SHALL NOT BE REPRODUCED, COPIED OR USED AS THE BASIS FOR THE MANUFACTURE OF SALE OF APPARATUS WITHOUT WRITTEN PERMISSION.		DRAWN: WAYNE ROBBINS	DATE: 9-21-98
			CHECKED:	DATE:
NorComp		SCALE: 1:2	SHEET 1 OF 1	REV 1
		DWG NO. 990-XXX-010-091		