



# SAW Components

Data Sheet B4168





**SAW Components**

**B4168**

**Low-Loss Filter for Mobile Communication**

**1960,0 MHz**

**Data Sheet**



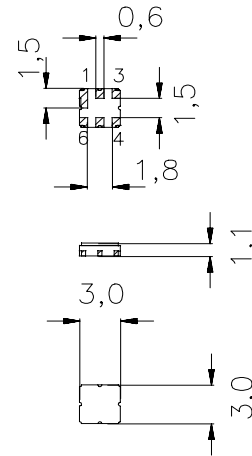
Ceramic package **DCC6C**

**Features**

- Low-loss RF filter for mobile telephone PCS systems, receive path
- Usable passband 60 MHz
- No matching network required for operation at 50 Ω
- Suitable for GPRS class 1 to 12
- Ceramic Package for **Surface Mounted Technology (SMT)**

**Terminals**

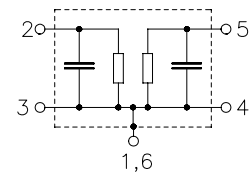
- Ni, gold-plated



Dimensions in mm, approx. weight 0,037 g

**Pin configuration**

- 2 Input
- 1, 3 Input - ground
- 5 Output
- 4, 6 Output - ground



Type	Ordering code	Marking and Package according to	Packing according to
B4168	B39202-B4168-U410	C61157-A7-A67	F61074-V8088-Z000

Electrostatic Sensitive Device (ESD)

**Maximum ratings**

Operable temperature range	$T$	- 30/+ 75	°C	peak power of GSM signal, duty cycle 4:8
Storage temperature range	$T_{stg}$	- 40/+ 85	°C	
DC voltage	$V_{DC}$	3	V	
Input power at GSM850, GSM900	$P_{IN}$	15	dBm	
GSM1800, GSM1900	$P_{IN}$	12	dBm	
Tx bands				



Data Sheet



Characteristics

Operating temperature range:  $T = +25 \pm 2^\circ\text{C}$   
 Terminating source impedance:  $Z_S = 50 \Omega$   
 Terminating load impedance:  $Z_L = 50 \Omega$

			min.	typ.	max.	
<b>Center frequency</b>	$f_c$		—	1960,0	—	MHz
<b>Maximum insertion attenuation</b>	$\alpha_{\max}$		—	2,7	3,5	dB
		1930,0 ... 1990,0 MHz				
<b>Amplitude ripple (p-p)</b>	$\Delta\alpha$		—	1,4	2,2	dB
		1930,0 ... 1990,0 MHz				
<b>Input VSWR</b>			—	1,9	2,1	
		1930,0 ... 1990,0 MHz				
<b>Output VSWR</b>			—	1,9	2,1	
		1930,0 ... 1990,0 MHz				
<b>Attenuation</b>	$\alpha$					
		10,0 ... 1850,0 MHz	23,0	25,0	—	dB
		1850,0 ... 1910,0 MHz	10,5	14,0	—	dB
		2010,0 ... 2070,0 MHz	10,5	15,0	—	dB
		2070,0 ... 2410,0 MHz	25,0	29,0	—	dB
		2410,0 ... 2910,0 MHz	33,0	37,0	—	dB
		2910,0 ... 4500,0 MHz	25,0	29,0	—	dB
		4500,0 ... 5000,0 MHz	20,0	26,0	—	dB
		5000,0 ... 6000,0 MHz	8,0	10,0	—	dB



Data Sheet



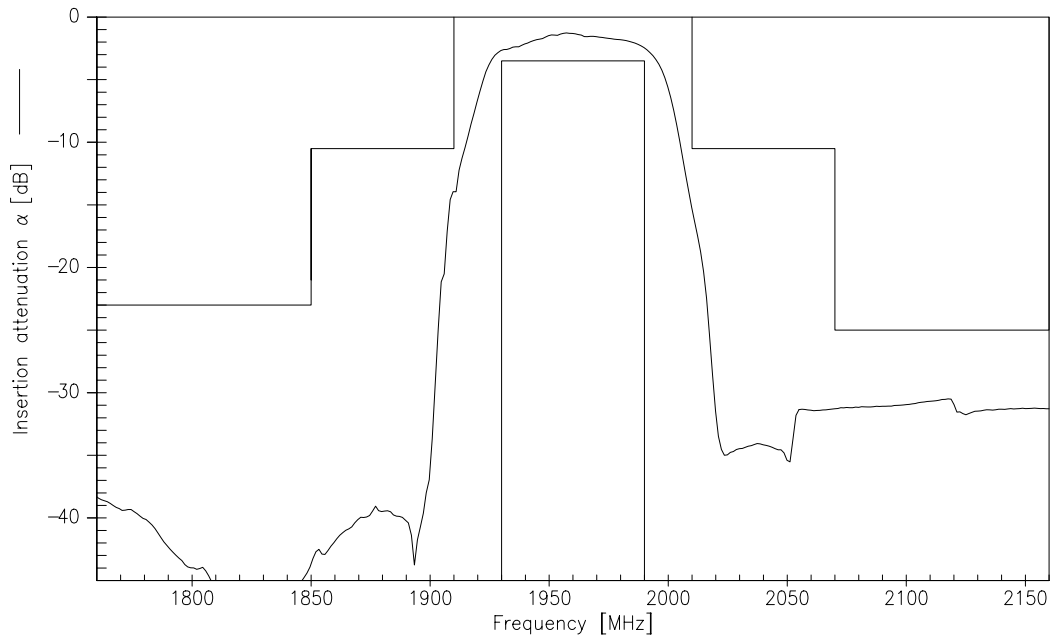
Characteristics

Operating temperature range:  $T = -10$  to  $+75^{\circ}\text{C}$   
 Terminating source impedance:  $Z_S = 50\ \Omega$   
 Terminating load impedance:  $Z_L = 50\ \Omega$

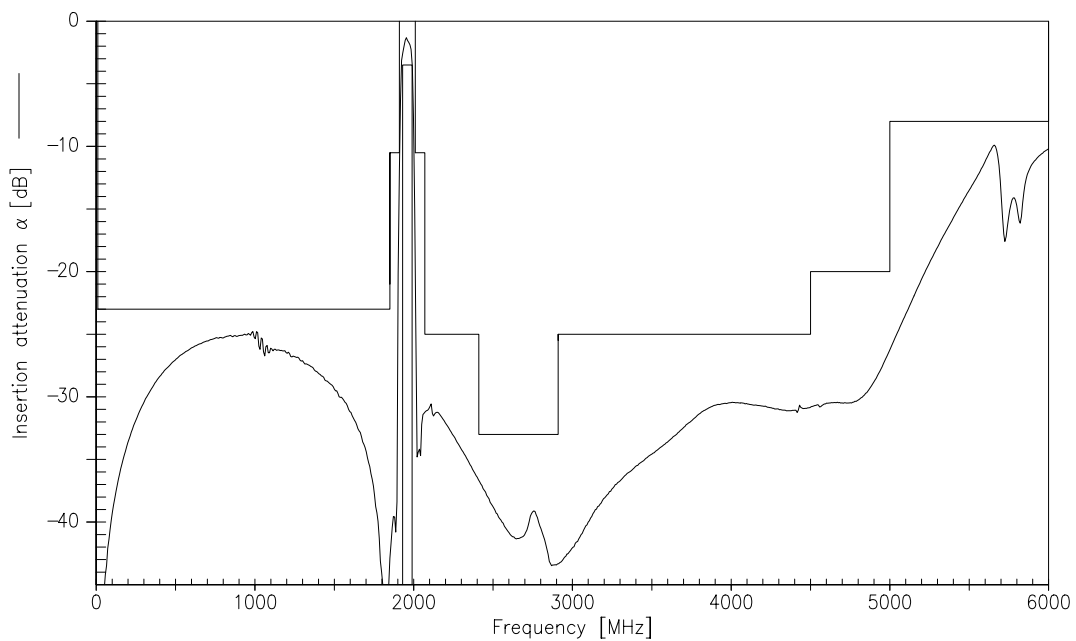
			min.	typ.	max.	
<b>Center frequency</b>	$f_c$		—	1960,0	—	MHz
<b>Maximum insertion attenuation</b>	$\alpha_{\max}$		—	2,7	4,3	dB
		1930,0 ... 1990,0 MHz				
<b>Amplitude ripple (p-p)</b>	$\Delta\alpha$		—	1,4	3,0	dB
		1930,0 ... 1990,0 MHz				
<b>Input VSWR</b>			—	1,9	2,1	
		1930,0 ... 1990,0 MHz				
<b>Output VSWR</b>			—	1,9	2,1	
		1930,0 ... 1990,0 MHz				
<b>Attenuation</b>	$\alpha$					
		10,0 ... 1850,0 MHz	23,0	25,0	—	dB
		1850,0 ... 1910,0 MHz	8,5	14,0	—	dB
		2010,0 ... 2070,0 MHz	8,5	15,0	—	dB
		2070,0 ... 2410,0 MHz	25,0	29,0	—	dB
		2410,0 ... 2910,0 MHz	33,0	37,0	—	dB
		2910,0 ... 4500,0 MHz	25,0	29,0	—	dB
		4500,0 ... 5000,0 MHz	20,0	26,0	—	dB
		5000,0 ... 6000,0 MHz	8,0	10,0	—	dB



Transfer function(Spec for 25° C):



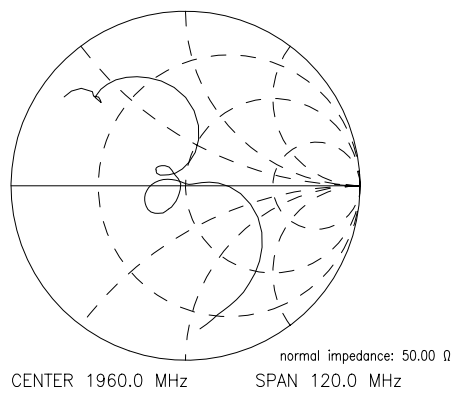
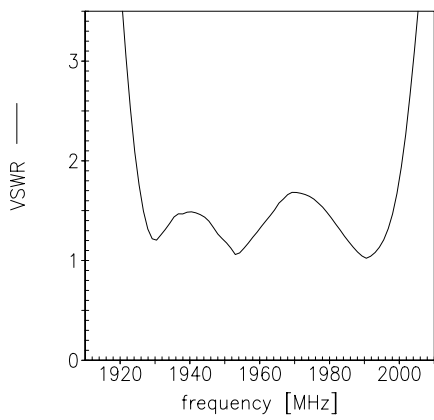
Transfer function(wideband):



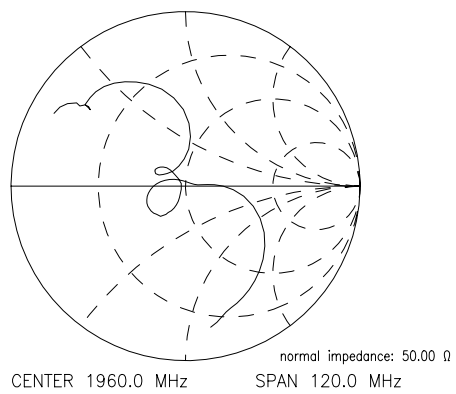
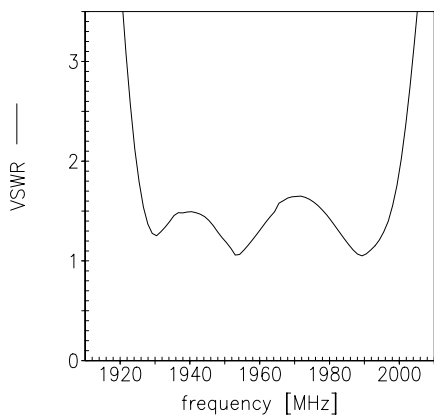


Reflection functions:

$S_{11}$



$S_{22}$





**SAW Components**

**B4168**

**Low-Loss Filter for Mobile Communication**

**1960,0 MHz**

Data Sheet



**ublished by EPCOS AG**

**Surface Acoustic Wave Components Division, SAW MC WT**

**P.O. Box 80 17 09, 81617 Munich, GERMANY**

© EPCOS AG 2002. Reproduction, publication and dissemination of this brochure and the information contained therein without EPCOS' prior express consent is prohibited.

Purchase orders are subject to the General Conditions for the Supply of Products and Services of the Electrical and Electronics Industry recommended by the ZVEI (German Electrical and Electronic Manufacturers' Association), unless otherwise agreed.

This brochure replaces the previous edition.

For questions on technology, prices and delivery please contact the Sales Offices of EPCOS AG or the international Representatives.

Due to technical requirements components may contain dangerous substances. For information on the type in question please also contact one of our Sales Offices.